



## WIFI MONO LO A I E

See  
ACCD\_WM12

Ed o  
1 4

Model  
WIFI ACCD\_WM12 FOR ACTIVE

## User Privacy Instructions

---

We take your privacy very seriously and we promise to inform you how we use the data.

Users' private data, such as mailboxes, address, before uploading to the cloud, we will get your permission, and we will work hard to protect your data security.

## Description

---

- Receive data signal from cloud server and transmit to the main device;
- Receive data signal from main device and transmit to cloud server;
- To achieve remote upgrade the WIFI module baseplate MCU by cloud server;
- To achieve the remote upgrade of the main device by WIFI module baseplate MCU.

## Technical Parameters

---

**OPERATING VOLTAGE:** DC8V~12V (Recommended value 12V)

**OPERATING CURRENT:** Max. recurrent peak 1A, average standby current 50mA

**TEMP. RANGE:** Operating Temp.: -30℃~+70℃; Storage Temp.: -40℃~+85℃

**LED INDICATOR LIGHT:**

4 lights, Network configuration indicator, router connection indicator, cloud server connection indicator, 485 communication indicator;

**DIMENSION(L×W×H):** 78mm×63mm×24mm

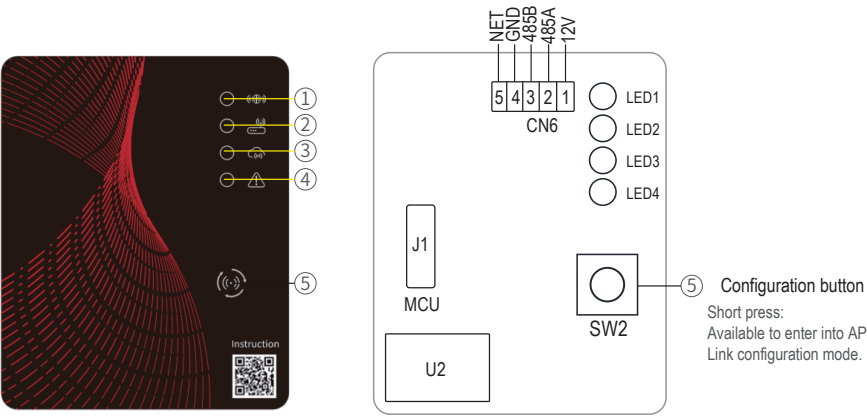
## Installation

---

- There is a magnet on the back of the WIFI module, it can be installed indoors or outdoors, and avoid direct sunlight;
- Please scan the following QR code to download APP;



# Functional Description



ITEM	NAME	LONG LIGHT	SLOW FLASH	EXTINGUISH
①	Network configuration indicator	Configuring Network	SmartLink configuring	Done
②	Router connection indicator	Normal	Abnormal	----
③	Cloud server connection indicator	Normal	Abnormal	----
④	485 communication indicator	Normal	Abnormal	----

# Account Login

Use email address and password to register, login or reset the password.

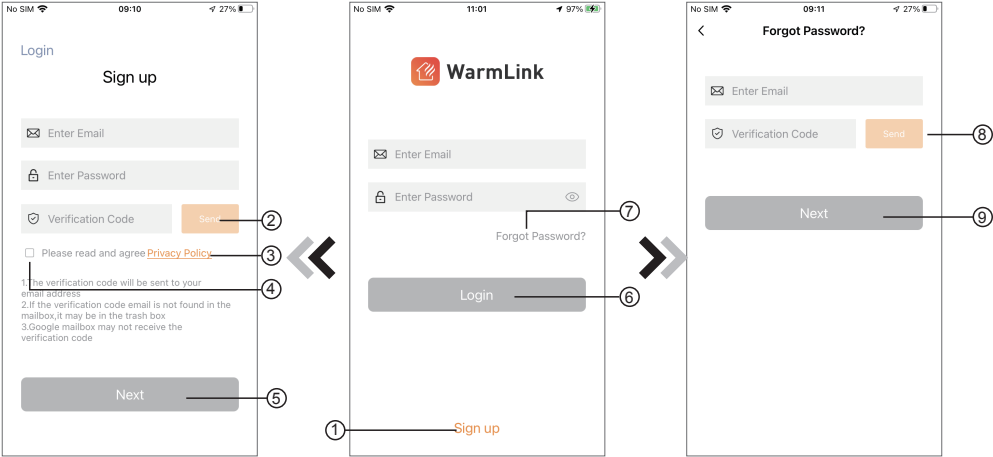


Fig.2 Account Registration interface

Fig.1 Login interface

Fig.3 Forgot Password interface

1. Account Registration: To register an account, click ① (Fig.1) to jump to the Account Registration interface, fill in the relevant information and click ② to receive verification code, while completed the application information, click ③ to read the details of the Privacy Policy, then click ④ to agree, and click ⑤, registration is done.
- Please note, the valid time of one verification code is 15min, please fill in the verification code within 15min, otherwise you need to ask for a new one.
2. Log in: Follow the instructions on the page(Fig.1 ), enter your registered email address and password, click ⑥ and jump to device list;
3. Forgot Password: While forget your password, click ⑦ (Fig.1 ), jump to the Forgot Password interface (Fig.3 ). Follow the instructions on the page, fill in the relevant informations, click ⑧ to receive verification code from your mailbox, click ⑨ to confirm and password reset is done.

## Add Device

After log in, displays My Device interface (Fig. 4) , follow the instruction to add WIFI.

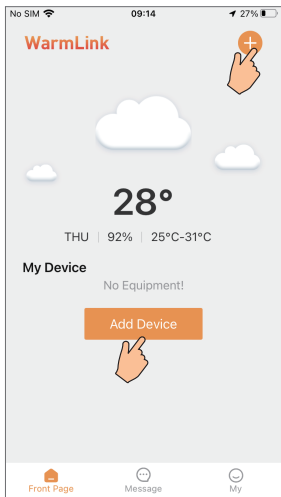


Fig.4 My Device interface

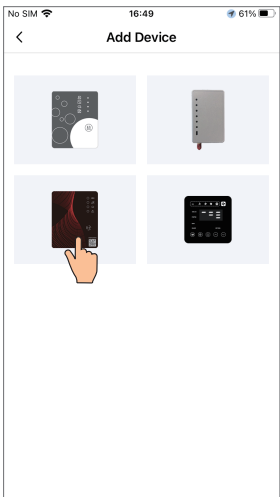


Fig.5 Add Device interface



# WIFI Configure Network

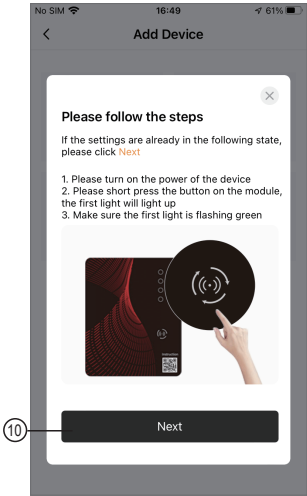


Fig.6 WIFI Module On interface

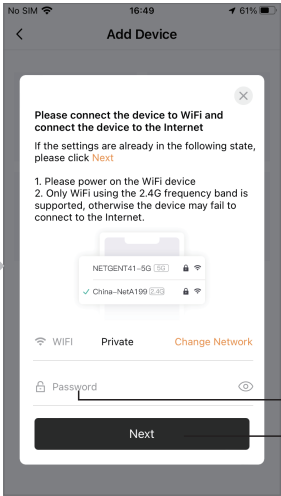


Fig.7 Enter password interface

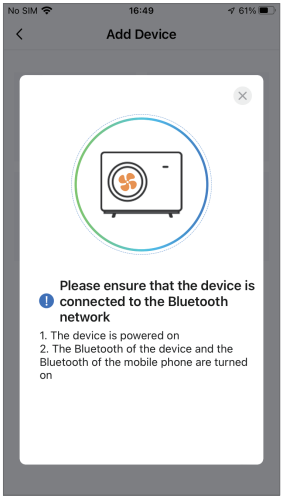


Fig.8 Searching device interface

1. Follow the instructions on the page (Fig.6), press button on module and hold for 1s till two lights on, then AP connection is activated,, click ⑩ to turn the page;
2. Click ⑪ to enter the WIFI password for the current connection, click ⑫ to confirm;
3. The APP automatically searches for WIFI module(Fig 8);
4. Click "To Scan" ( Fig.9) to allow the App to use the camera for scanning the WF code on the WIFI module (Fig.11.1), or click "Manual input" to enter the WF code(Fig.11.2).

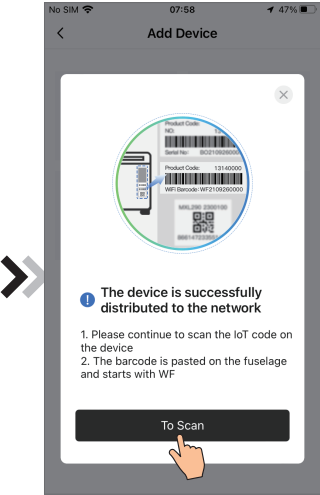


Fig.9 Bond device interface

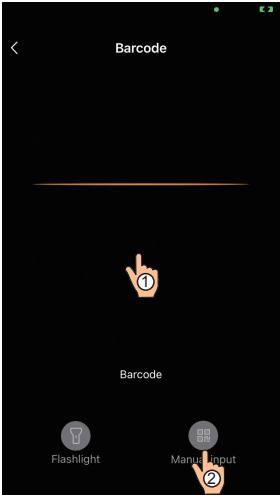


Fig.10 Scanning interface



Fig.11.1 WF barcode

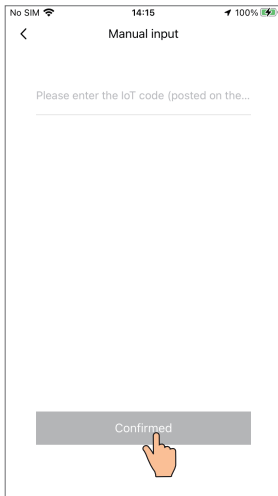


Fig.11.2 Manual input interface

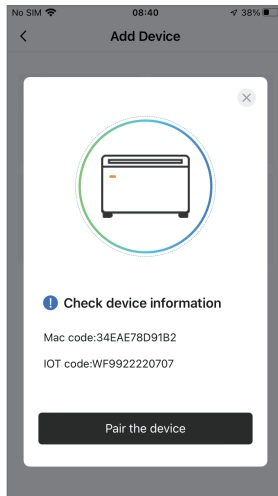


Fig.12 Bond Device interface

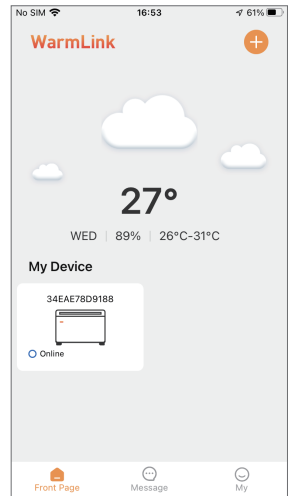


Fig.13 Device management interface

- 5.Click "Pair the device", device bond is done (Fig.12);
6. After WIFI bonding is done, and jump back to My Device(Fig. 13).

## Device Management

Device management operations are as below :

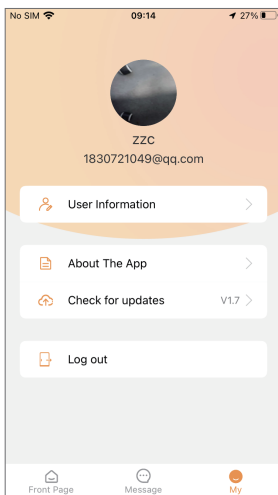


Fig.15 My information interface

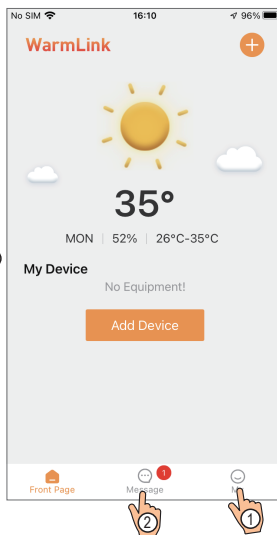


Fig.14 Device management interface

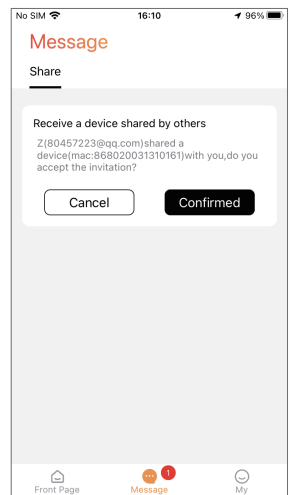


Fig.16 Share invitation data interface

# Heating Device Control

## Guidelines for interface jumps

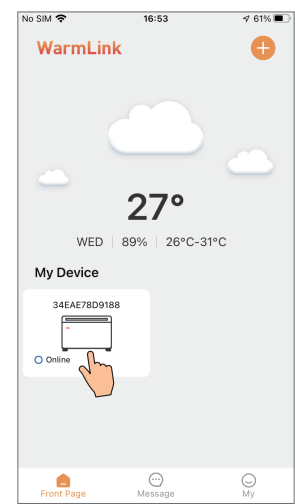


Fig.17 Device management interface



Fig.18 Device Main interface

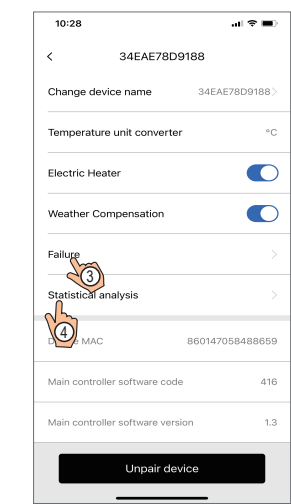


Fig.19 Setting interface

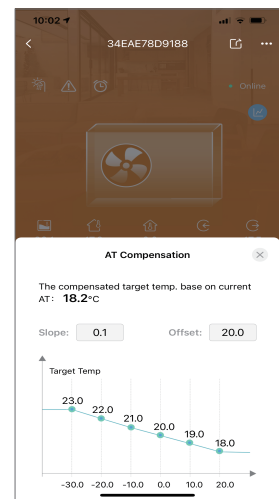
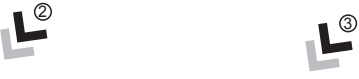


Fig.20 AT compensation curve interface

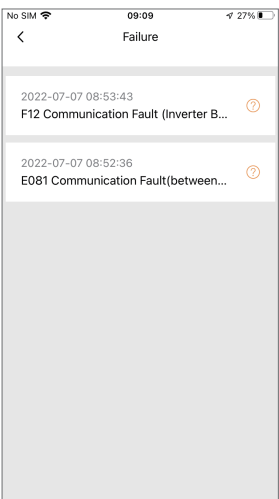


Fig.21 The failure interface

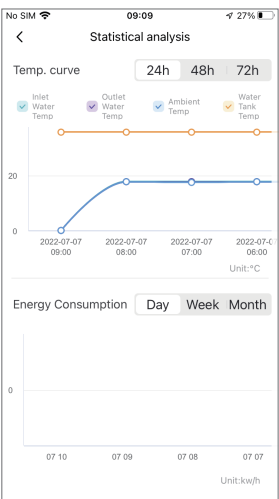
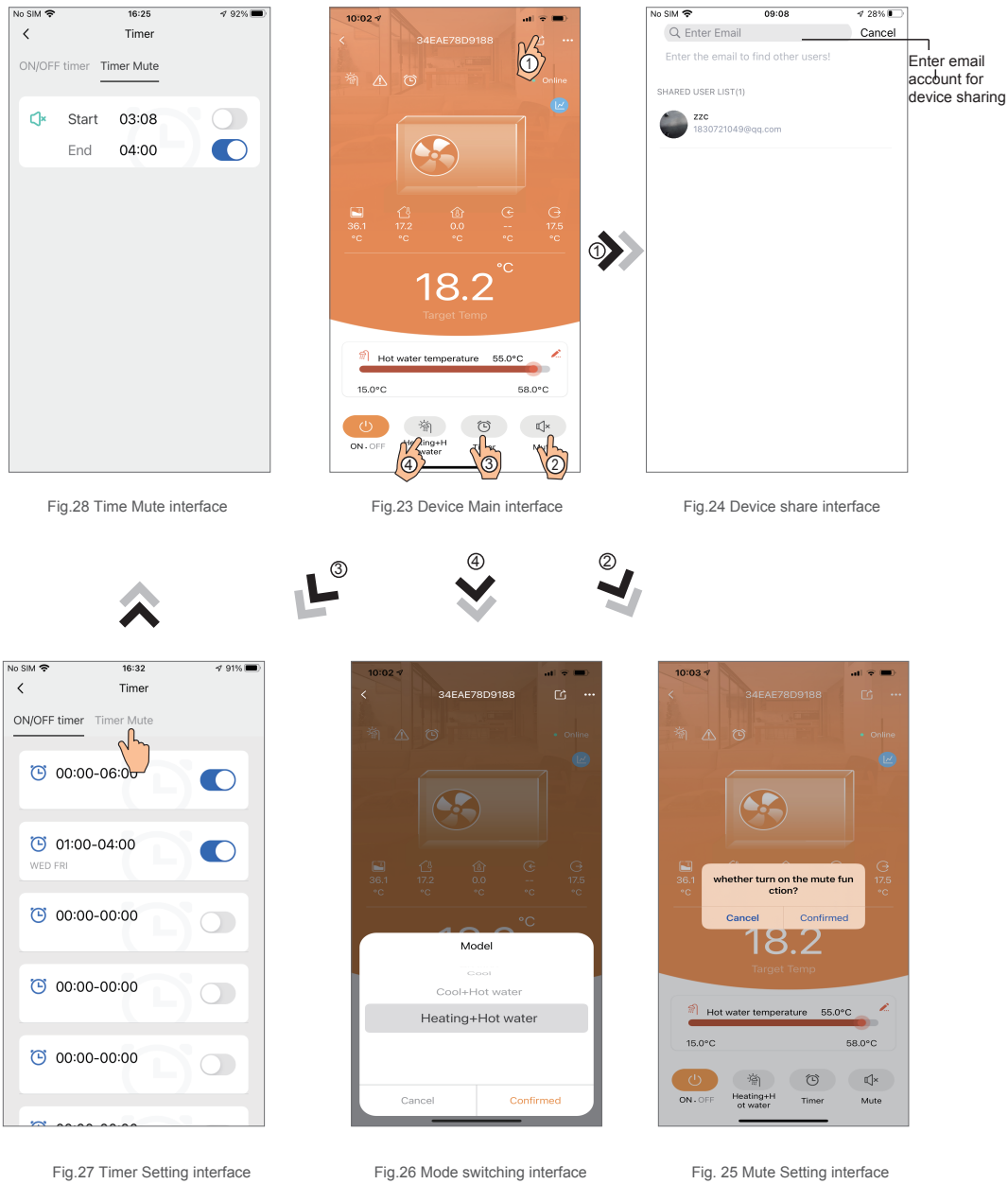


Fig.22 Statistical analysis interface

# Heating Device Control

## Guidelines for interface jumps



# Fan Coil Device Control

## Guidelines for interface jumps

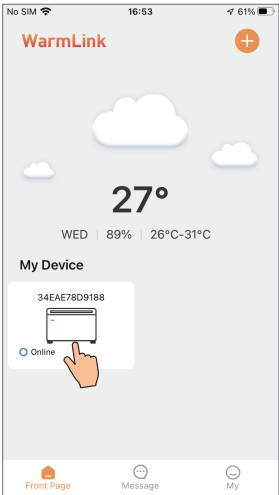


Fig.29 Device management interface

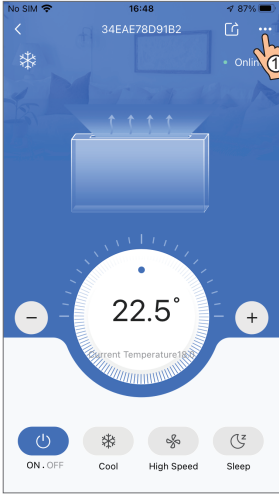


Fig.30 Device Main interface

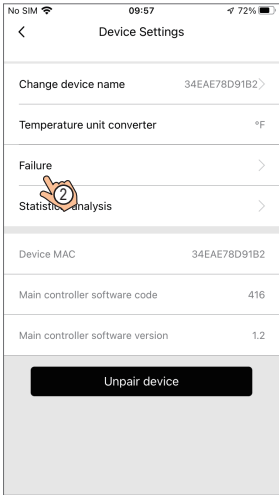


Fig.31 Setting interface

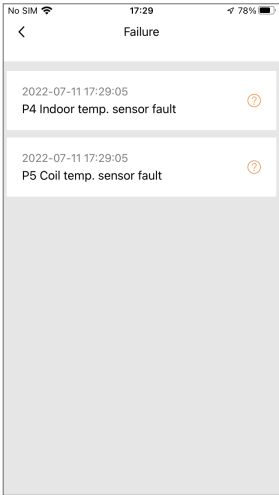


Fig.32 The failure interface

# Fan Coil Device Control

## Guidelines for interface jumps

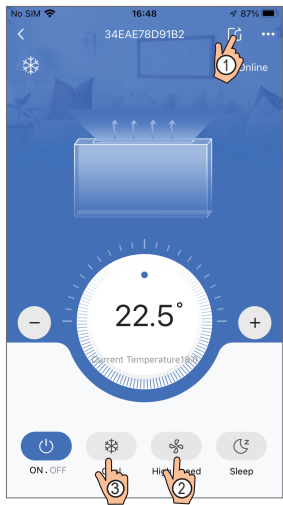
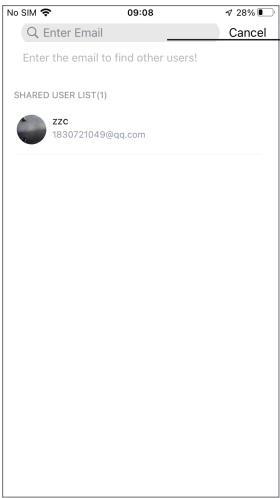


Fig.33 Device Main interface



Enter email  
account for  
device sharing

Fig.34 Device share interface

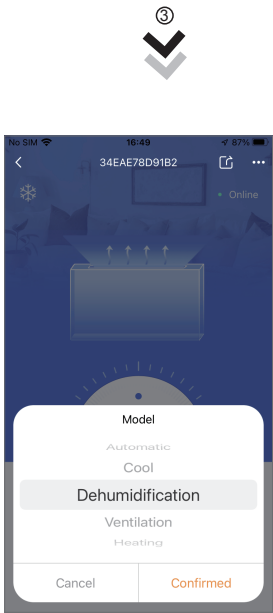


Fig.35 Mode switching interface

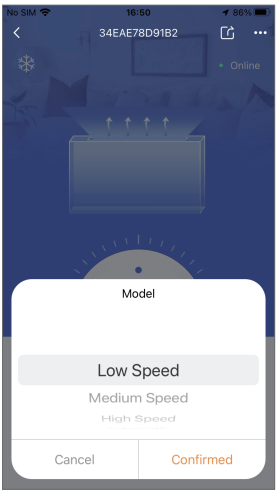




















Fig. 36 Speed setting interface

ICON	NAME	FUNCTIONS
	ON/ OFF	Click it to turn on/ off the unit
	Silent Mode Off/on	Displays mute mode. Click to switch mute mode
	Timers settings	Click to enter timer on/off
	Troubleshooting	Click to view device failure information
	heating and hot water	Select Save to change the working mode
	hot water	Select Save to change the working mode
	heating	Select Save to change the working mode
	refrigeration	Select Save to change the working mode
	refrigeration and hot water	Select Save to change the working mode
	Electric heating condition	Display electric heating status
	Defrost status	Display defrost status
	Water flow	Display water flow
	The environment temperature	Display ambient temperature
	water inlet temperature	Display inlet temperature
	Tank temperature	Display tank temperature
	Indoor temperature	Display room temperature (room temperature)
	hot water temperature	Display outlet water temperature
	Setting	Click to change the functions setting of unit

# d2itsu

**EUROFRED**  
*being efficient*

Eurofred S.A.  
Marqués de Sentmenat 97  
08029 Barcelona  
[www.eurofred.es](http://www.eurofred.es)