



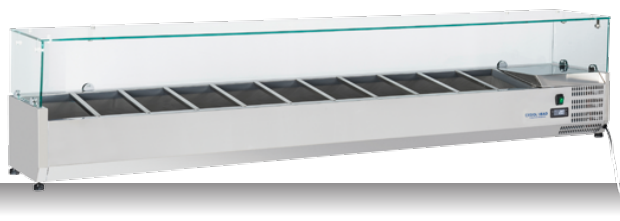
DETAILS



Tempered glass top



Higher stainless steel adjustable feet as optional



GENERAL FEATURES

- Refrigerated horizontale showcase (Pans GN1/4)
- Stainless Steel exterior and interior
- Static Cooling
- Automatic compressor cycle defrost
- Single copper pipe evaporator (No welding in the foaming)
- Digital Thermostat
- N.4 Adjustable feet
- Spacer set included
- GN1/4 Pans are not included with the unit
- Tempered glass top
- Energy efficiency class: -

TECHNICAL SPECIFICATIONS

Capacity	74 L
Temperature	+2° ~ +8°C
Consumption	2.2 kWh/24h
Rated Power	160 W
Noise level	56 dB(A)
Net Weight	54.5 Kg
Gross Weight	88 Kg
External Dimensions (WxDxH mm)	2200x335x440
Internal Dimensions (WxDxH mm)	1850x246x163
Packaging dimensions (WxDxH mm)	2340x405x460
Loading quantities 20'/40'/40'HQ	50/125/125

CERTIFICATION

CE RoHS

PRODUCT DIMENSIONS

