

USB WIFI

Serie
ARTIC

Edition
11/21

Models

DS-9KDP-WIFI (CH)
DS-12KDP-WIFI (CH)
DS-18KDP-WIFI (CH)
DS-24KDP-WIFI (CH)

DOS-9KDP-WIFI (CH)
DOS-12KDP-WIFI (CH)
DOS-18KDP-WIFI (CH)
DOS-24KDP-WIFI (CH)

Statements

Federal Communication Commission Interference Statement

This device complies with part 15 of the FCC Rules. Operation is subject to the following two conditions:

(1) This device may not cause harmful interference, and (2) this device must accept any interference received, including interference that may cause undesired operation.

Any Changes or modifications not expressly approved by the party responsible for compliance could void the user's authority to operate the equipment.

Note: This equipment has been tested and found to comply with the limits for a Class B digital device, pursuant to part 15 of the FCC Rules. These limits are designed to provide reasonable protection against harmful interference in a residential installation. This equipment generates uses and can radiate radio frequency energy and, if not installed and used in accordance with the instructions, may cause harmful interference to radio communications. However, there is no guarantee that interference will not occur in a particular installation. If this equipment does cause harmful interference to radio or television reception, which can be determined by turning the equipment off and on, the user is encouraged to try to correct the interference by one or more of the following measures:

- Reorient or relocate the receiving antenna.
- Increase the separation between the equipment and receiver.
- Connect the equipment into an outlet on a circuit different from that to which the receiver is connected.
- Consult the dealer or an experienced radio/TV technician for help.

FCC Radiation Exposure Statement

This equipment complies with FCC radiation exposure limits set forth for an uncontrolled environment.

This equipment should be installed and operated with minimum distance 20cm between the radiator & your body.

RF Exposure: A distance of 20cm shall be maintained between the antenna and users, and the transmitter module may not be co-located with any other transmitter or antenna.

ISED Statement

Innovation, Science and Economic Development Canada ICES-003 Compliance Label:

CAN ICES-3 (B)/NMB-3(B)

This device contains licence-exempt transmitter(s)/receiver(s) that comply with Innovation, Science and Economic Development Canada's licence-exempt RSS(s). Operation is subject to the following two conditions:

1. This device may not cause interference.
2. This device must accept any interference, including interference that may cause undesired operation of the device.

This equipment complies with ISED RSS-102 radiation exposure limits set forth for an uncontrolled environment. This equipment should be installed and operated with a minimum distance of 20cm between the radiator and any part of your body.

étiquette de conformité à la NMB-003 d'Innovation, Sciences et Développement économique Canada: CAN ICES-3 (B)/NMB-3 (B)

L'émetteur/récepteur exempt de licence contenu dans le présent appareil est conforme aux CNR d'Innovation, Sciences et Développement économique Canada applicables aux appareils radio exempts de licence. L'exploitation est autorisée aux deux conditions suivantes :

1. L'appareil ne doit pas produire de brouillage;
 2. L'appareil doit accepter tout brouillage radioélectrique subi, même si le brouillage est susceptible d'en compromettre le fonctionnement.
- Pour se conformer aux exigences de conformité CNR 102 RF exposition, une distance de séparation d'au moins 20 cm doit être maintenue entre l'antenne de cet appareil et toutes les personnes.

CONTENTS

Wi-Fi Module specification and Operation guideline	1
Install the Wi-Fi module(Optional)	2
Download and Install the App	3
Activate APP	4
Registration	5
Login	7
Add device	9
Air conditioner control	12
Account management	30
Trouble Shooting	32

Wi-Fi Module specification and Operation guideline

1. Minimum specifications on a Smart phone:

Android 5.0 version or higher

IOS 9.0 version or higher

2. Basic parameters for Wi-Fi module

Parameters	Details
Network frequency	2.400 - 2.4835GHz
Standards of WLAN	IEEE 802.11 b/g/n (channels 1-14, channels 1-13 for EU/AU, channels 1-11 for US/CA)
Protocol stack support	IPv4/TCP/UDP/HTTPS/TLS/DNS
Security support	WEP/WPA/WPA2/AES128
Network type support	STA/AP/STA+AP
Max. RF Power	18.5 dbm
Blue tooth frequency	2.402 - 2.480GHz
Blue tooth RF Power	9 dbm

3.Operation guideline. Please take below simple guideline instruction as reference.

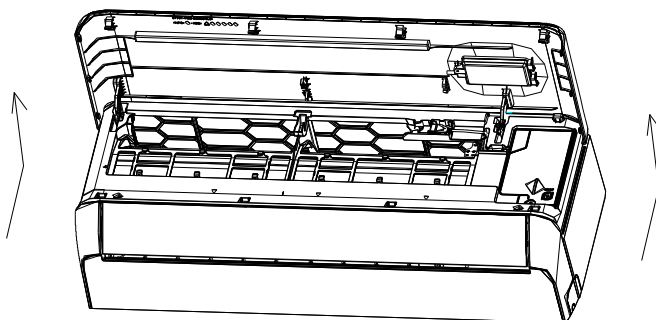
Operation Steps	Operation Items	New Account	Re-install APP (registered before)
Step 1	Download and Install APP	YES	YES
Step 2	Activate APP	YES	YES
Step 3	Registration Account	YES	NO
Step 4	Login	YES	YES
Step 5	Add Device to control	YES	Registered Device will remain.

Note:

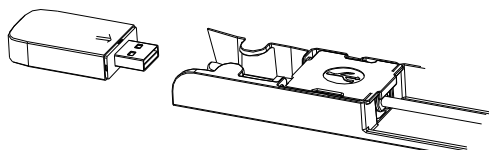
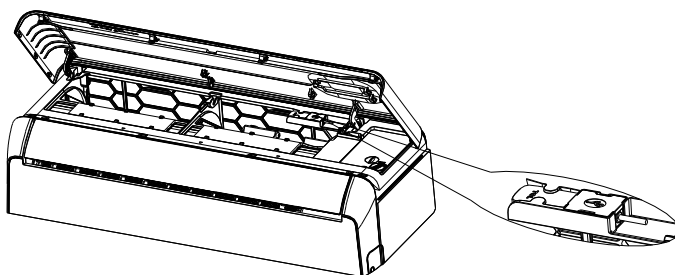
If you registered the account and added device before, when you re-install the APP again and login, the added device will remain .

Install the Wi-Fi module(Optional)

1. Open the panel of indoor unit.



2. Take off the cover of USB Wi-Fi, follow the arrow and insert the USB Wi-Fi module into the reserved USB slot on the frame.



Download and Install the App



SmartLife-SmartHome

For Android smart phone

Method1: Please scan the QR code with a browser scanner, download and install the APP.

Method2: Open the Google "Play Store" on your smart phone and search "SmartLife-SmartHome", download and install the APP.



For IOS smart phone

Method1: Please scan the QR code and follow the tips to get into "AppStore", download and install the APP.

Method2: Open the Apple "AppStore" on your smart phone and search "SmartLife-SmartHome", download and install the APP.



Note:

Please enable the permissions of Storage/Location/Camera for this APP when installing. Otherwise it will have some problems when operating.

Activate APP

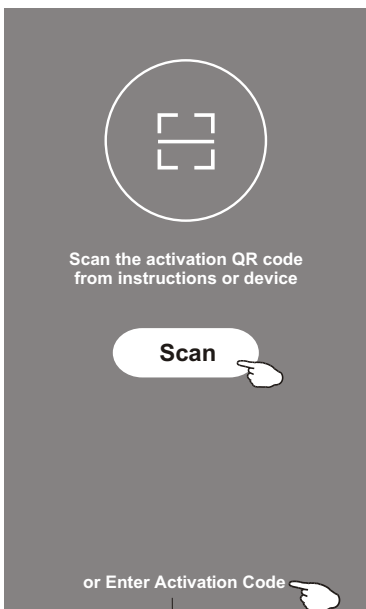
The first time the app is used, it will need activating.

1. Launch the APP "Smart Life" on your smart phone.



SmartLife-SmartHome

2. Method1: Tap button "Scan" and scan the right Activate QR code
Method2: Tap "or Enter Activation Code" in bottom of the screen, then enter the activate code and tap "CONFIRM".



Activate QR code and activation code

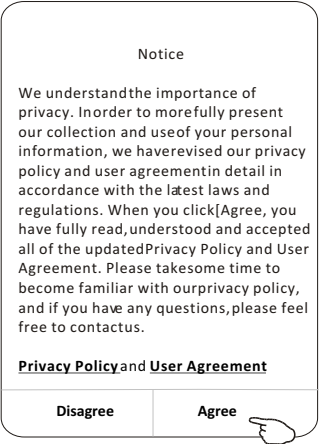
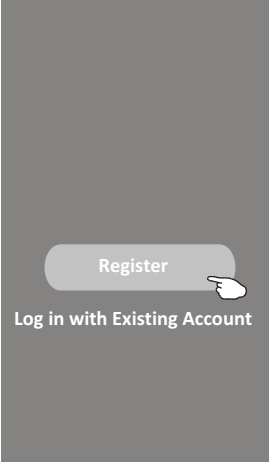


Note: Without the QR code or activation code, you can't active the APP and using it, please keep them safe.

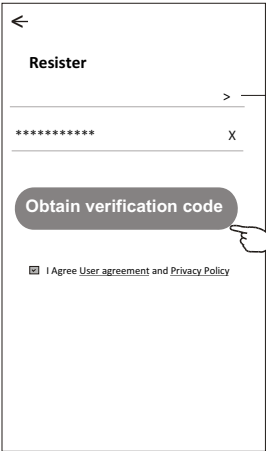


Registration

1. If you don't have any account please tap button "Register".
2. Read the Privacy Policy and tap "Agree".



3. Tap ">" and choose the country.
4. Enter your e-mail address.
5. Tap the button "Obtain verification code".



enter your e-mail address here

Search the country or slide the screen up/down to find and choose the Country.



Registration

6. Enter the verification code you received from e-mail.
7. Set the Password with 6-20 characters including characters and numbers.
8. Tap "Done".

<

Enter verification code

* * * * *

Verification code is sent to your email:
*****@****, Resend(55s)

<

Set Password

6-20 characters for password, including character, numbers

Done

Login

1. Tap "Log in with existing account".
2. Enter your registered account and password.
3. Tap "Log in" button.

Register

Log in with Existing Account

<

Login

Log in

Forgot password

Login means that you agree with [User Agreement](#) and [Privacy Policy](#)

enter your account here

enter the password

Login

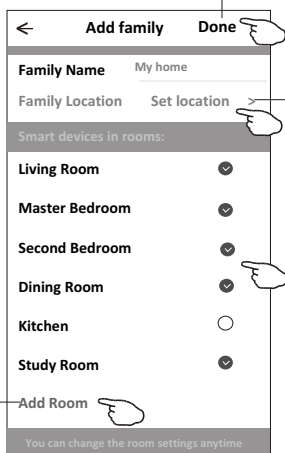
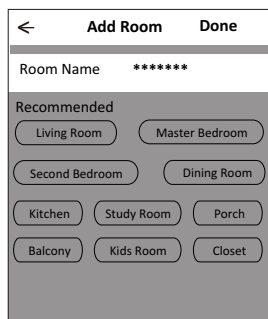
The first time the APP is used, Create family is needed:

4. Tap "Create family".
5. Make name for the family.
6. Set the location.
7. Choose default rooms or add new rooms.
8. Tap "Done" and "Completed".



Family created successfully
View family Completed

choose the recommended room or make a new room, then tap Done.



Note:

The app can open the map on your phone and you can set the location where you are.

Login

Forgot the password

If you forgot the password or you want to reset the password, operate as below:

1. Tap "Forgot password".
2. Enter your account(e-mail address) and tap button "Obtain verification code".
3. Enter the verification code received by your e-mail.
4. Set the new password and tap button "Done".

<

Login

***** >

Email address

Password

Log in

Forgot password

Login means that you agree with [User Agreement](#) and [Privacy Policy](#)

<

Forgot password

***** >

***** X

Obtain verification code

<

Enter verification code

* * * * *

Verification code is sent to your email:
*****Resend(55s)

<

Set Password

* * * * *

6-20 characters for password, including character, numbers

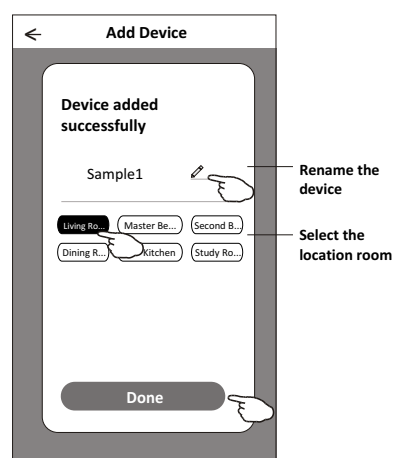
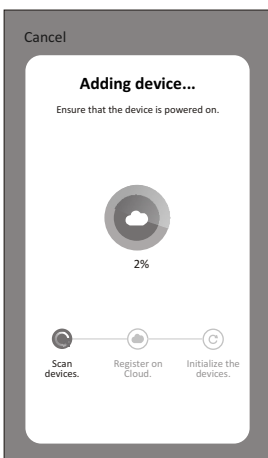
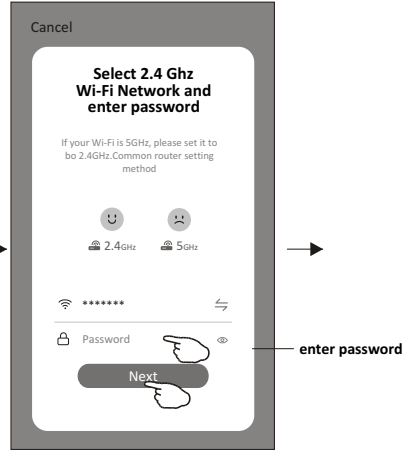
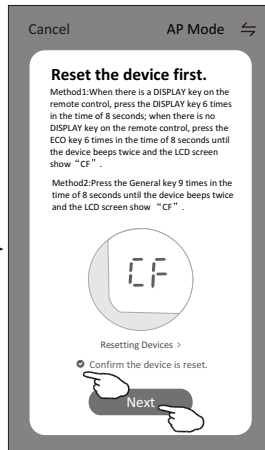
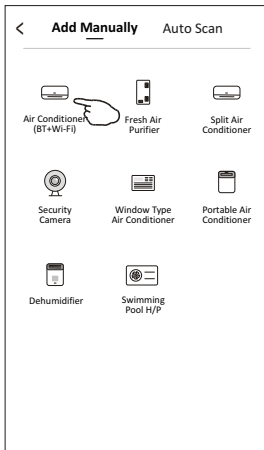
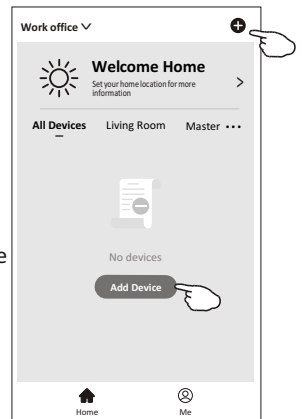
Done

Add device

There are 3 methods to add the device.

1-CF mode

1. Power on the indoor unit, no need to launch the air conditioner.
2. Click "+" in the upper right corner of the "Home" screen or tap "Add device" on the room which has no device.
3. Tap the "Air conditioner(BT+Wi-Fi)" logo.
4. Follow the comments on the next screen to reset the Wi-Fi module then check "Confirm the device is reset" and tap "Next".
5. Input the password of the Wi-Fi which the same as your smart phone connected, then tap "Next".
6. You can see the percent rate of connecting process, at the same time "PP", "SA", "AP" shining in turn on the indoor display.
 "PP" means "Searching the router"
 "SA" means "connected to the router"
 "AP" means "connected to the server"



Add device

There are 3 methods to add the device.

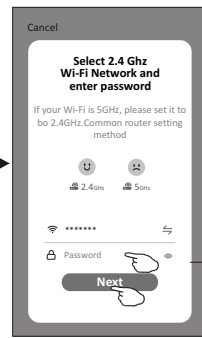
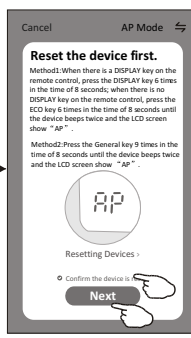
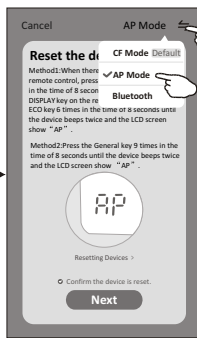
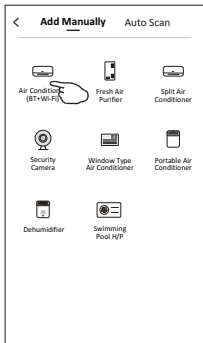
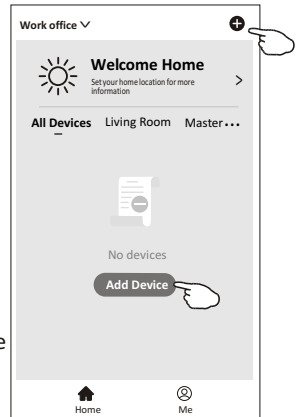
2-AP mode

1. Power on the indoor unit, no need to launch the air conditioner.
2. Click "+" in the upper right corner of the "Home" screen or tap "Add device" on the room which has no device.
3. Tap the "Air conditioner(BT+Wi-Fi)" logo.
4. Tap in the upper right corner and choose "AP Mode" then follow the comments on the screen to reset the Wi-Fi module then check "Confirm the device is reset" and tap "Next".
5. Input the password of the Wi-Fi which the same as your smart phone connected, then tap "Next".
6. Read the instruction carefully and tap "Connect now".
7. In the network setting screen, select "SmartLife-****", and tap "←".
8. You can see the percent rate of connecting process, at the same time "PP", "SA", "AP" shining in turn on the indoor display.

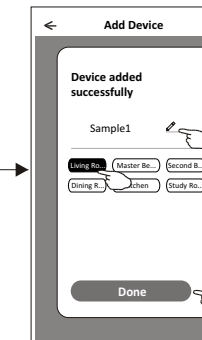
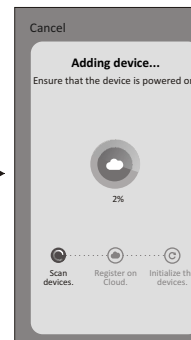
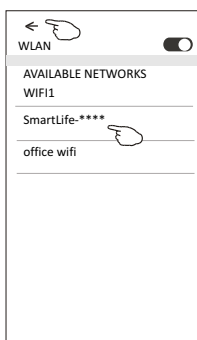
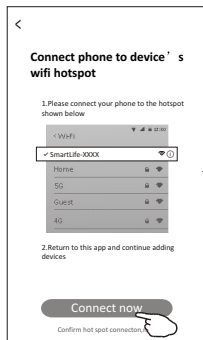
"PP" means "Searching the router"

"SA" means "connected to the router"

"AP" means "connected to the server"



enter password



Rename the device

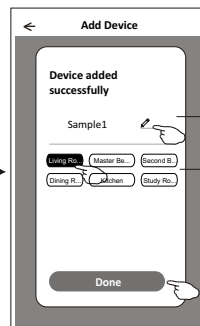
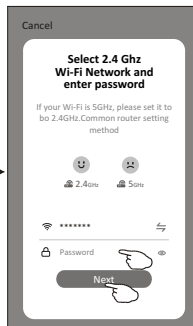
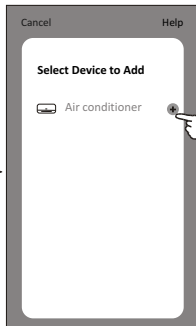
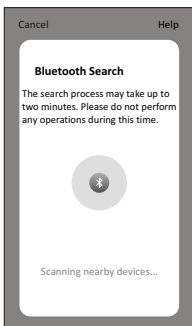
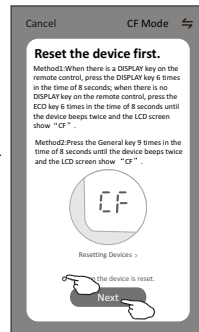
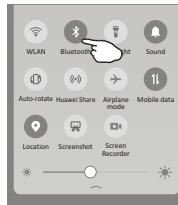
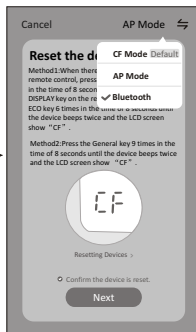
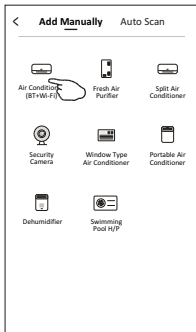
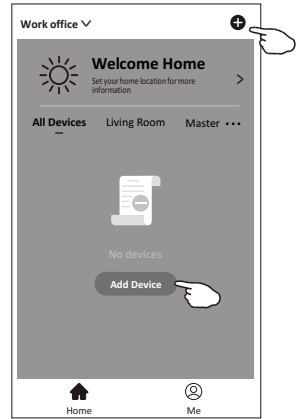
Select the location room

Add device

There are 3 methods to add the device.

3-Blue tooth mode

- 1.Power on the indoor unit, no need to launch the air conditioner.
- 2.Click "+" in the upper right corner of the "Home" screen or tap "Add device" on the room which has no device.
- 3.Tap the "Air conditioner(BT+Wi-Fi)" logo.
- 4.Make sure Blue tooth of your smart phone is available.
- 5.Tap ⇌ in the upper right corner and choose "Bluetooth" then follow the comments on the screen to reset the Wi-Fi module then check "Confirm the blue tooth is reset" and tap "Next".
- 6.Select one of the found device and tap "+"
- 7.Input the password of the Wi-Fi which the same as your smart phone connected, then tap "Next".
- 8.You can see the percent rate of connecting process,at the same time "PP", "SA", "AP" shining in turn on the indoor display.
 "PP" means "Searching the router"
 "SA" means "connected to the router"
 "AP" means "connected to the server"

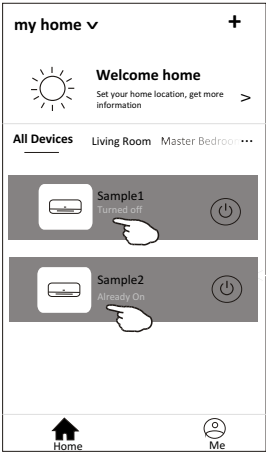


Rename the device
Select the location room

Air conditioner control

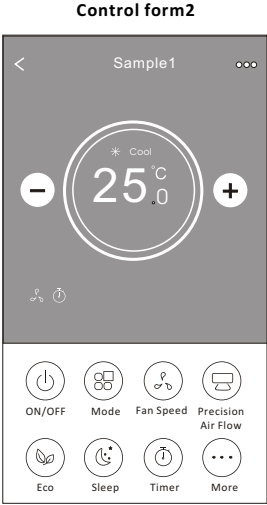
The device control screen will pop up automatically after adding the device.

The device control screen will pop up manually by tapping the device name on the home screen.



Note:

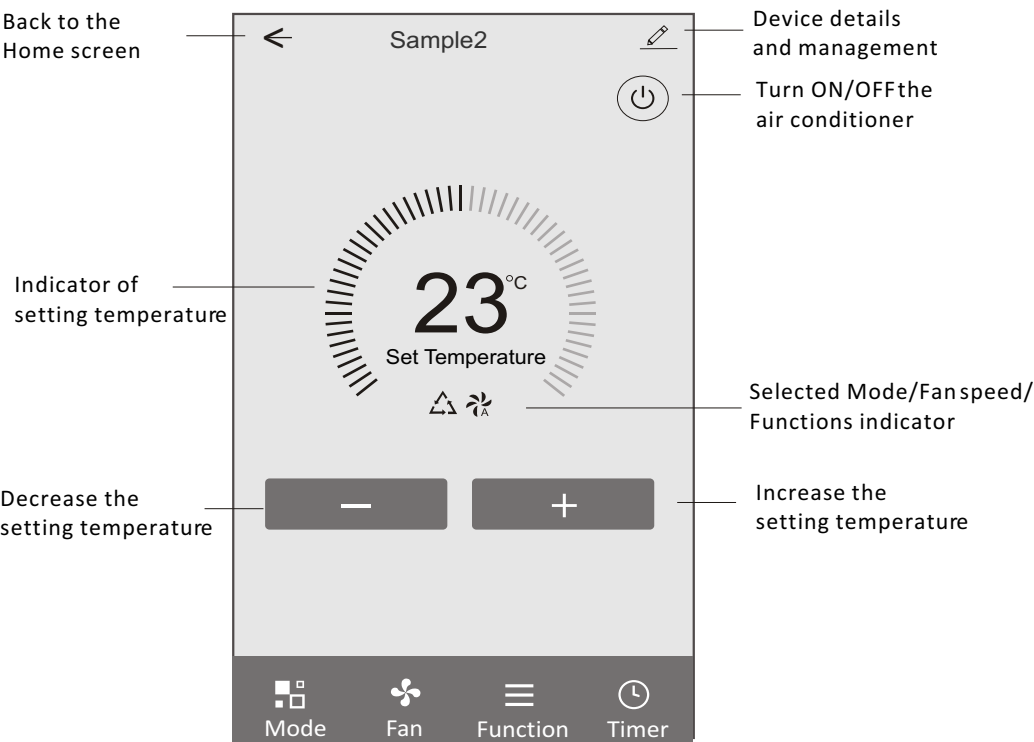
There are two different control forms base on different software or Wi-Fi module firmware. Please read the manual carefully base on the real control interface.



Air conditioner control

Control form1

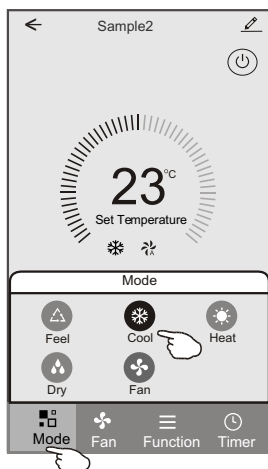
The main control interface



Air conditioner control

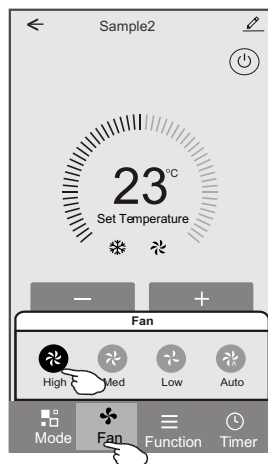
Control form1-Mode setting

1. Tap Mode to pop up the Mode screen.
2. Select one of the mode Feel/Cool/Heat/Dry/Fan.
3. Tap anywhere around the setting temperature to cancel the Mode setting.



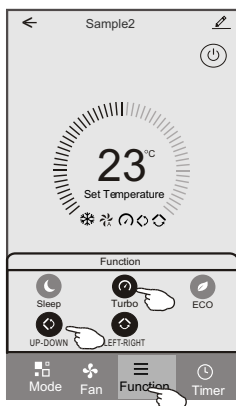
Control form1-Select fan speed

1. Tap Fan to pop up the Fan screen.
2. Select one of the fan speed High/med/Low/Auto.
3. Tap anywhere around the setting temperature to cancel the selection.



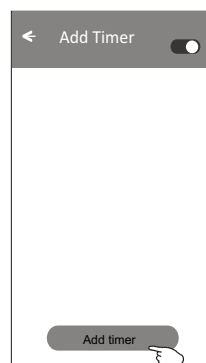
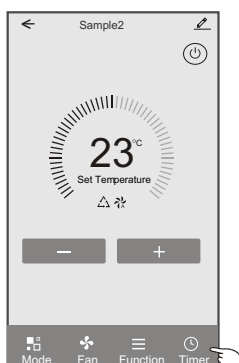
Control form1-Function setting

1. Tap Function to pop up the Function screen.
2. Select one of the functions Sleep/Turbo/ECO.
3. Select UP-DOWN/LEFT-RIGHT for auto swing with direction of UP-DOWN/LEFT-RIGHT.
4. Tap anywhere around the setting temperature to cancel the Function setting.



Control form1-Timer adding

1. Tap Timer to pop up the Add Timer screen.
2. Tap Add Timer.



Air conditioner control

Control form1-Timer adding

- 3. Select the time, select the repeat days and Timer on/off.
- 4. Select the Mode/Fan speed/Function and select the setting temperature for Timer on.
- 5. Tap Save to add the timer.

Timer on

Timer cancel

Cancel

Add Timer

Save

Hour setting

1207

1308

1409

1510

1611

1712

1813

Mode setting

Timer Off

Timer On

Mode

Fan

Set Temperature

Function

Cool >

Auto >

23°C >

>

Timer off

Timer submit

Cancel

Add Timer

Save

Minute setting

1226

1326

1427

1528

1629

1730

1831

Weekly setting

Select days to use Smart Mode

Mon

Tues

Wed

Thun

Fri

Sat

Sun

Timer ON/OFF setting

Timer Off

Timer On

✓

Control form1-Timer Management

- 1. Tap the bar of timer to edit the Timer like the Timer adding process.
- 2. Click the switch to enable or disable the Timer.
- 3. Holdind the bar of Timer about 3seconds and pop up the Remove Timer screen, tap CONFIRM and remove the Timer.

< Add Timer

Timer accuracy is +/- 30 seconds

12:20

Once

Timer:Off

12:20

Mon, Tue, Wed, Thurs

Timer: On 16°C Cool Turbo UP-DOWN

Add timer

Remove Timer

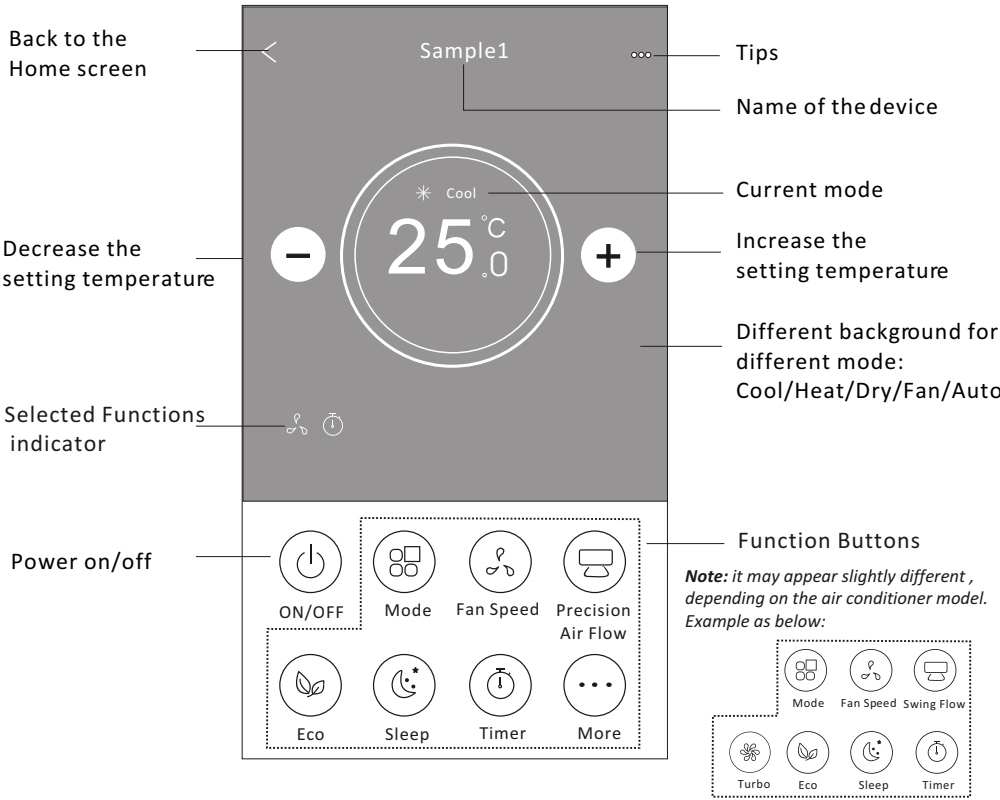
Remove the timer?

CANCEL CONFIRM

Air conditioner control

Control form2

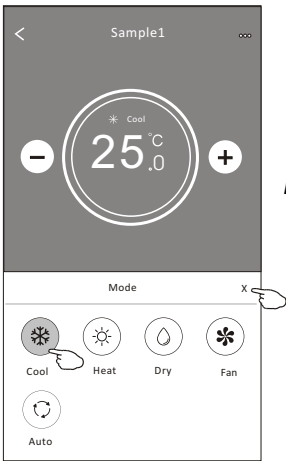
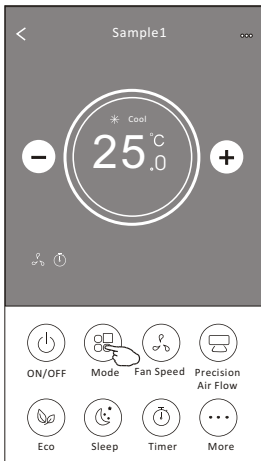
The main control interface



Air conditioner control

Control form2-Mode setting

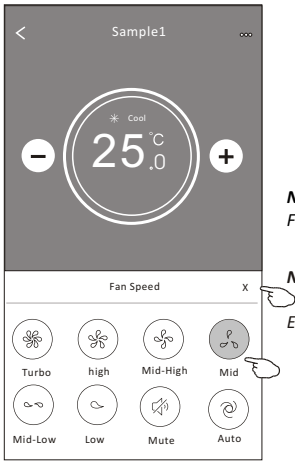
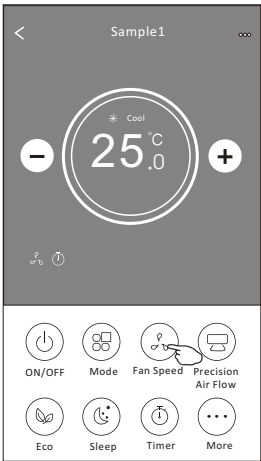
- 1. Tap the Mode button.
- 2. There are 5 modes on the Mode screen, tap one button to set the Air conditioner working mode.
- 3. Tap the X button to back the main control screen.
- 4. The mode and background will change on the screen.



Note: please read the details of each mode in the user manual to control more comfortable.

Control form2-Fan speed selection

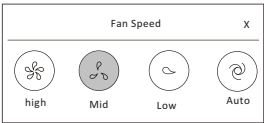
- 1. Tap the Fan speed button.
- 2. Choose your desired fan speed and tap it.
- 3. Tap the X button to back the main control screen.
- 4. The selected fan speed indicator will appear on the screen.



Mode	Fan Speed
Cool	All speeds
Fan	All speeds
Dry	
Heat	All speeds
Auto	All speeds

Note:
Fan Speed can't be adjusted on Dry mode .

Note: Fan Speed screen may appear slightly different , depending on the air conditioner model.
Example as below:

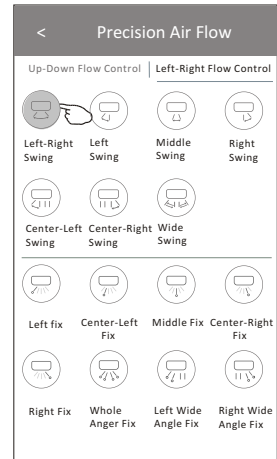
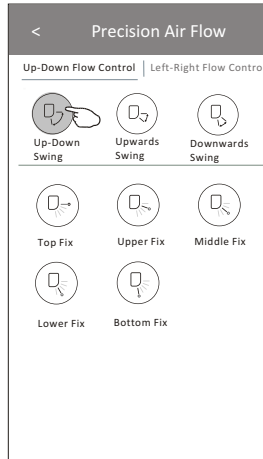
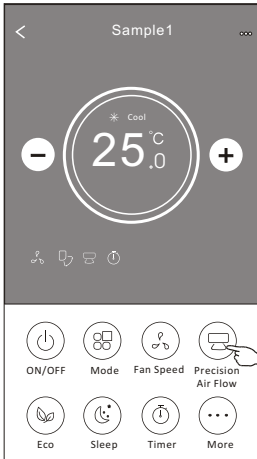


Air conditioner control

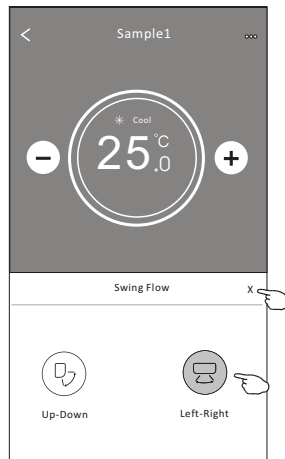
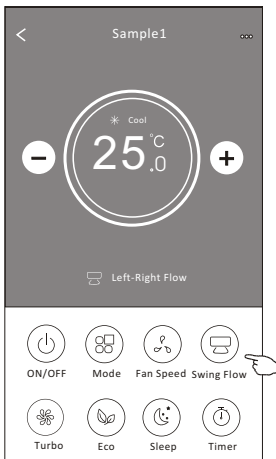
Control form2-Air Flow control

1. Tap the Precision Air Flow button or Swing Flow button.
2. Choose your desired air flow and tap it.
3. Tap the X button to back to the main control screen.
4. The selected air flow indicator will appear on the screen.

Note: For some models without auto Left-Right wind, If you active it, you will hear a beep, but no any actions.



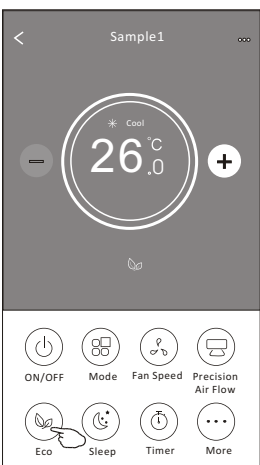
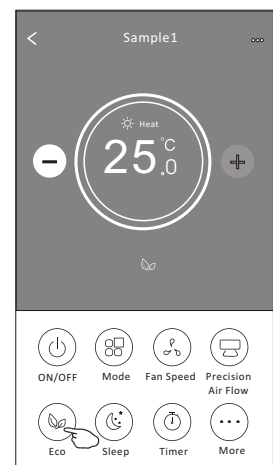
Note: The Main controlscreen and AirFlow screen may appear slightly different, depending on the air conditioner model. Examples as below:



Air conditioner control

Control form2-ECO function

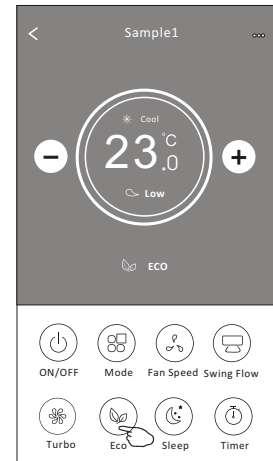
- 1. For Eco function, just tap the button to activate the function, the button will be lighting and the indicator will appear on the screen.
- 2. Tap again to disable the function.
- 3. Temperature controlled for some air conditioner model:
In Cooling mode, the new setting temperature will $\geq 26^{\circ}\text{C}$.
In heating mode, the new setting temperature will $\leq 25^{\circ}\text{C}$.



Mode	ECO enabled
Cool	Yes
Fan	
Dry	
Heat	Yes
Auto	

ECO is disabled on Fan/ Dry/Auto mode .

Note: The Main controlscreen and ECOcontrol method mayappear slightly different, depending on the airconditioner model.Example asbelow:


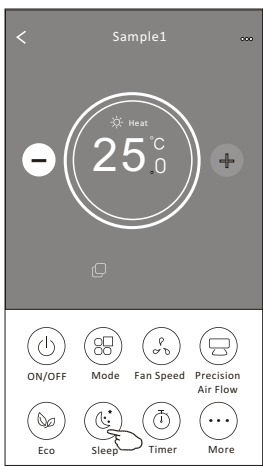


Note:
ECO is disabled on Turbo/Sleep mode too for some air conditioner model.

Air conditioner control

Control form2-Sleep function

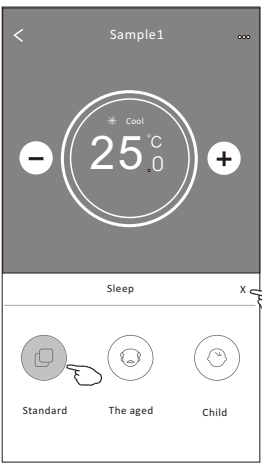

- 1. Tap the Sleep button.
- 2. Choose your desired sleep mode and tap it.
- 3. Tap the X button to back to the main control screen.
- 4. The selected sleep mode indicator will appear on the screen.



Mode	Sleep enabled
Cool	Yes
Fan	
Dry	
Heat	Yes
Auto	

Sleep is disabled on Fan/ Dry/Auto mode .

Note:
The Main controlscreen may appearslightly different,depending on theair conditioner model.
Example as below:

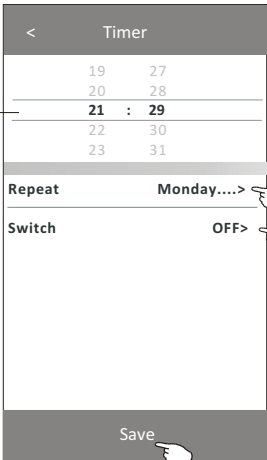
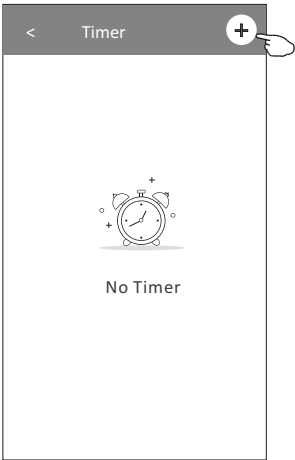
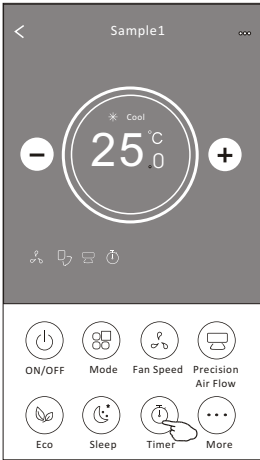


Note:
Sleep is disabled on Turbo/Sleep mode too
for some air conditioner model..

Air conditioner control

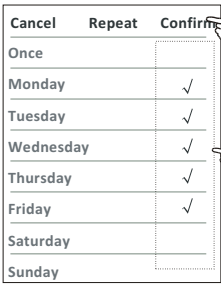
Control form2-Timer(on) setting

- 1. Tap the Timer button.
- 2. Tap + in the upper right corner of the Timer main screen.
- 3. Choose the Time/Repeat/Switch OFF then tap Save.
- 4. The timer(off) will appear on the Timer main screen.

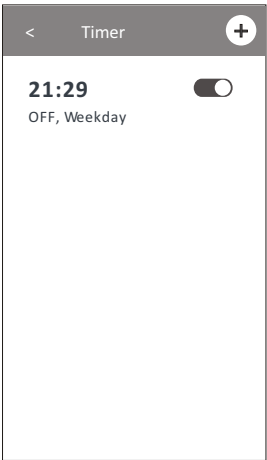
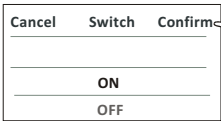


Slide up or down
to select time

Tap repeat> then tap your desired
repeat days or Once, then tap
Confirm your selection.



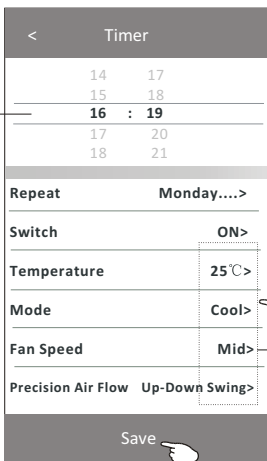
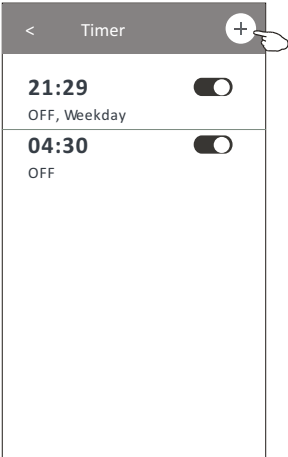
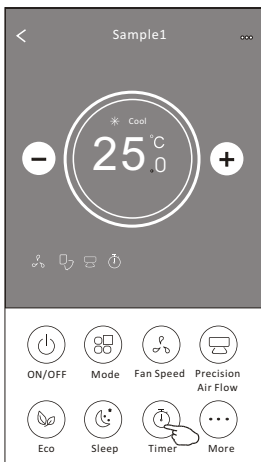
Tap Switch> then slide the
screen to choose ON
and Confirm.



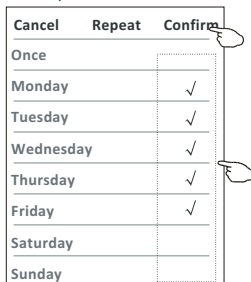
Air conditioner control

Control form2-Timer(off) setting

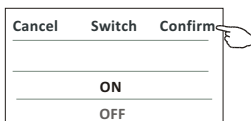
- 1. Tap the Timer button.
- 2. Tap + in the upper right corner of the Timer main screen.
- 3. Set the Time/Repeat Date/Switch(ON)/Temperature/Mode/ Fan speed/Air Flow as your desired and then tap Save.
- 4. The timer will appear on the Timer main screen.



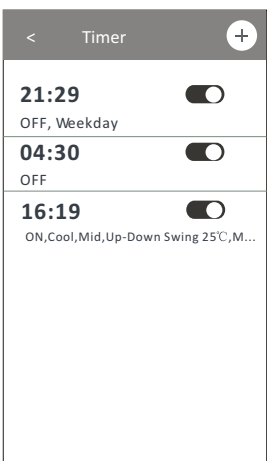
Tap repeat > then tap your desired repeat days or Once, then tap Confirm your selection.



Tap Switch > then slide the screen to choose ON and Confirm.



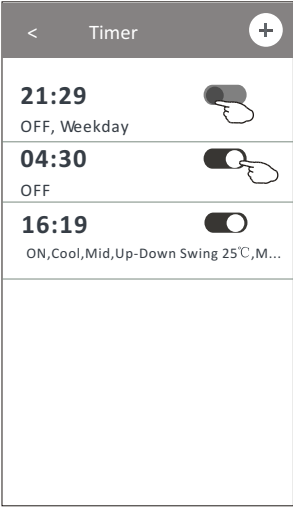
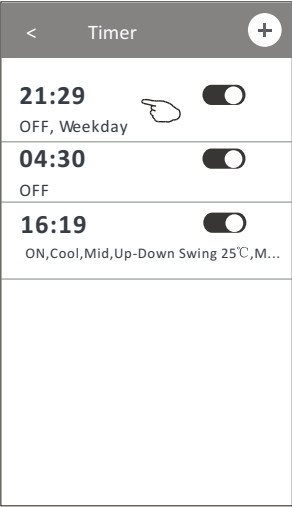
Tap Temperature/Mode/Fan Speed/ Air Flow > one by one then set as your desired as mentioned on the previous chapter and tap Confirm the setting.



Air conditioner control

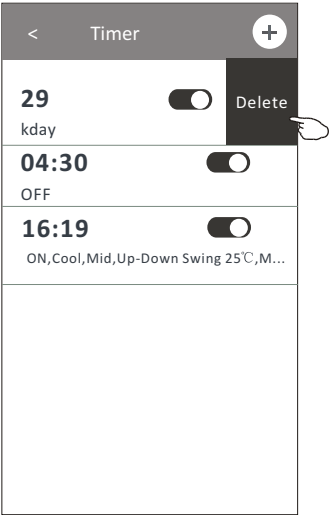
Control form2-Timer management

- 1.Change the Timer setting:
Tap anywhere of the timer list bar except the switch bar to get into the Timer setting screen, change the setting and then tap save.
- 2.Enable or Disable the Timer:
Tap the left of the switch to disable the Timer.
Tap the right of the switch to enable the Timer.
- 3.Delete the Timer:
Slide the list bar of the Timer from right to left until Delete button appear, then tap delete.



Slid left to disable the Timer.

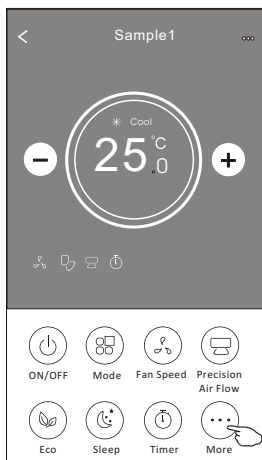
Slid right to enable the Timer.



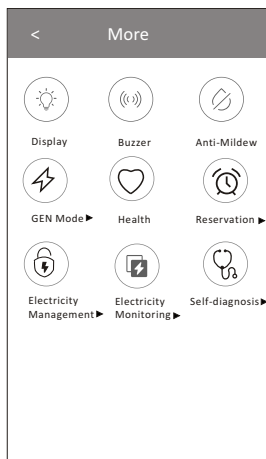
Air conditioner control

Control form2-More functions


1. Tap the More button to operate additional functions if it appears on the screen.





Note:
Some air conditioner model
don't have the more button.




Note: The appearance maybe different , some icons
will be hidden if the air conditional do no have this
function or do not enable on the current mode.

2. Tap the "  " to switch on/off the indoor LED display.


3. Tap the "  " to switch on/off the buzzing when operating through Wi-Fi APP.

4. Tap the "  " button to activate the Anti-Mildew function, if it is available on the screen.

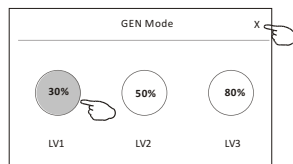
After AC turning off , it will start drying , reduce residual moisture and prevent mould, after function finish, it will automatically turn off.

5. Tap the "  " button to switch on/off the healthy function, if it is available on the screen.

It activate the antibacterial ioniser function.This function only for models with the ioniser generator.

6. Tap the "  " button, if it is available on the screen.

In this Mode, you can choose one of the three levels of current.
The air conditioner will maintain proper current to save energy.



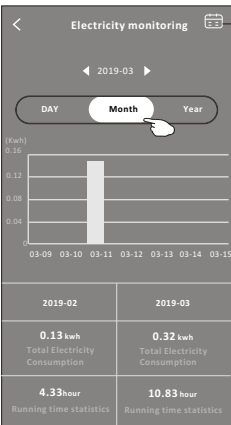
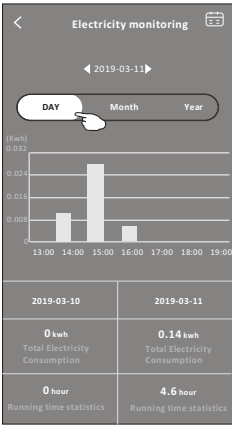
Air conditioner control

Control form2-More functions

7. Tap the "Electricity Monitoring" button if it is available on the screen.
In this function, you can monitor the air conditioner electricity consumption.



Electricity Monitoring ▶



You can tap this button to pop up the calendar then select the date.

8. Tap the "Self-Cleaning" button, if it is available on the screen.



Self-Cleaning

Check the details of the Self-Cleaning function on User Manual.

9. Tap the "8°C Heat" button, if it is available on the screen.



8°C Heat

This function help keep the room temperature over 8°C.
Check the details of the 8°C Heat function on User Manual.

10. Tap the "Reservation" button, if it is available on the screen.
You can set the time, repeat day, temperature, mode, fan speed, air flow as you desired and then tap Save to activate the function.
The air conditioner will automatically reach your settings at the appointment time.



Reservation ▶

Reservation	
14	17
15	18
16	19
17	20
18	21

Repeat setting	Monday... >
Temperature	25°C >
Mode	Cool >
Fan Speed	Mid >
Precision Air Flow	Up-Down Swing >

Save

16:19:00

ON, Cool, Mid, Up-Down Swing 25°C, M...

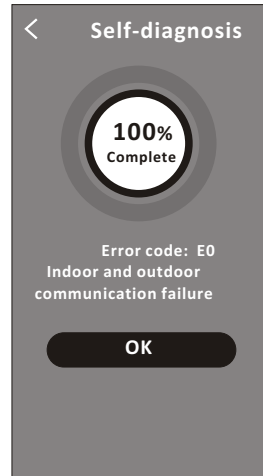
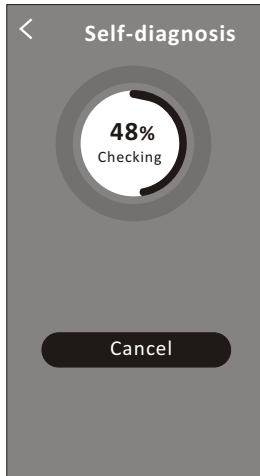
After the reservation is set up, the air conditioner will automatically reach your set requirement at your appointment time.


Air conditioner control

Control form2-More functions

11. Tap the "Self-diagnosis" button, if it is available on the screen.


The air conditioner will automatically diagnosis itself and indicate the Error code and the problem instructions if possible.



12. Tap the "  " button if it is available on the screen.

Photosensitive

This function allow the air conditioner to turn on/off the display automatically according to the light intensity.


13. Tap the "  " button if it is available on the screen.

Soft Wind

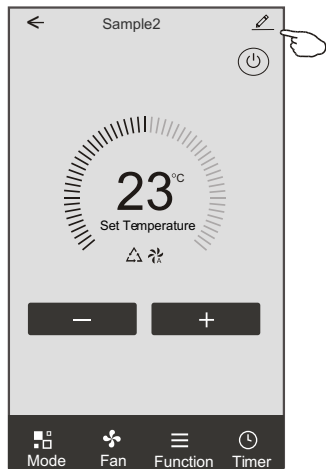
In this function, the air conditioner will blow soft airflow through the micro holes on the deflector.

Air conditioner control

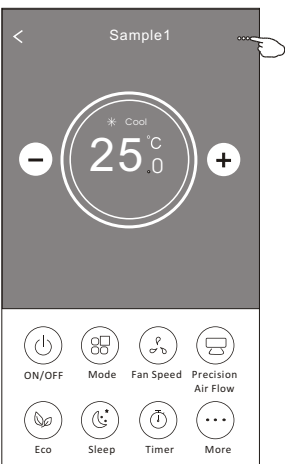
Device details and management

Tap  on control form1 or tap ... on control form2 , get into the device details screen. Here you can get some useful information and sharing the device to other accounts. Check the following pictures and instructions carefully.

Control form1

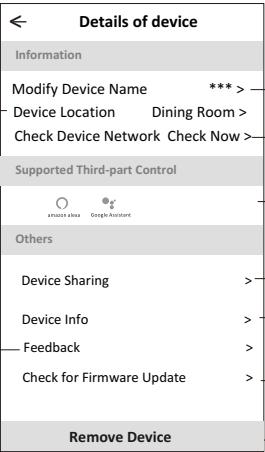


Control form2



Tap to change the device location to another room

Feed back the problems or some suggestions to the APP administrator.



Tap to check the network status

Tap to check the network status

Tap to got the instruction for connecting the amazon alexa or Google Assistant voice controller

Tap to sharing the device to other account

Tap to check the Virtual ID/Wi-Fi name/IP address MAC address/Time Zone/Wi-Fi single strength

Check and update the firmware

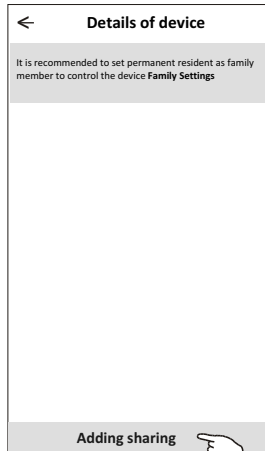
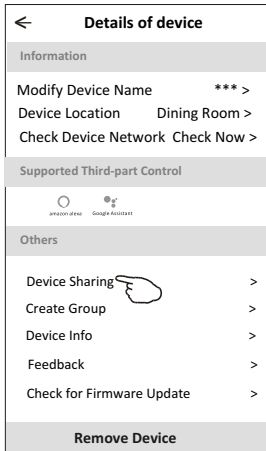
Tap to remove the device and the device will be reset automatically once be deleted.

Air conditioner control

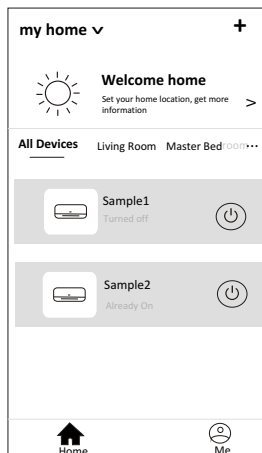
Device details and management

How to share the devices to other accounts?

1. Tap "Device Sharing" and pop up Device Sharing screen.
2. Tap "Add Sharing".
3. Select the region and enter the account which you want to sharing.
4. Tap "Completed", the account will appear on your sharing list.
5. The received sharing members should hold pressing the home screen and slide down to refresh the device list, the device will appear on the device list.



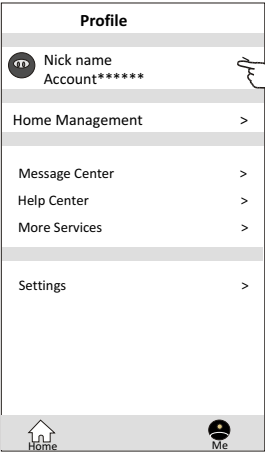
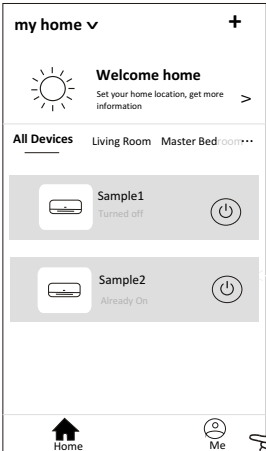
Hold the bar about 3s then you can delete the sharing account.



Hold on and slide down to refresh the device list

Account management

Account Profile setting

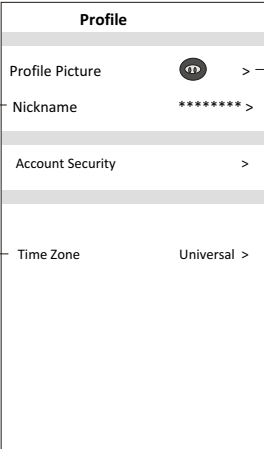


Change the nick
name of your account

Edit name

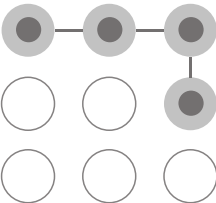
Account one |

Cancel Save

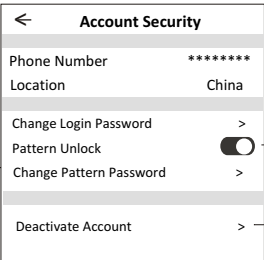


Select a picture for the
account from local album

Select the time zone



Set a pattern password
for launching the APP



Change the password
like reset password on page7

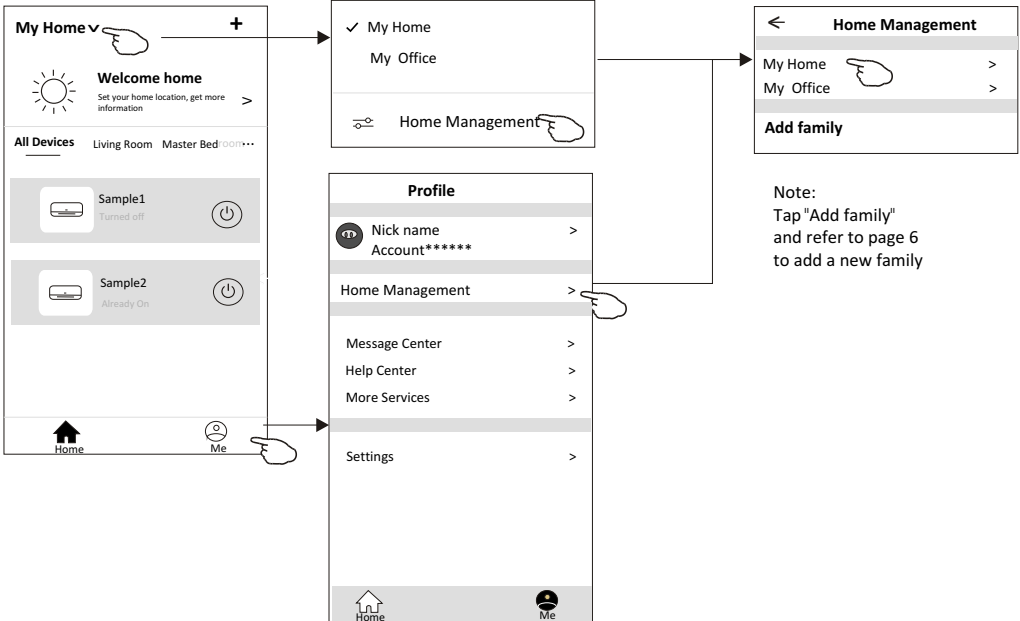
Tap the switch to enable
or disable the Pattern password

Please carefully to
deactivate the account
for all data will be deleted.

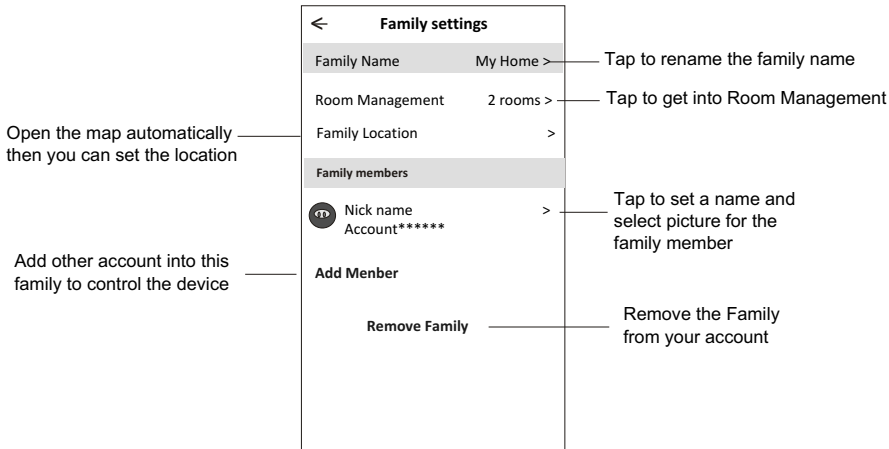
Account management

Home(Family) management

1. Tap the name of home at the left upper corner of the Home Screen and select the Home Management.
Or tap Me and tap Home Management.
2. Tap one of the families in the family list and get into Family Settings screen.



3. Set the family as the following indicators.



Notice

1. For technical update, there is maybe deviation of the actual items from what is on the manual.
Please refer to your actual product and APP.
2. Smart air conditioner APP can be altered without notice for quality improvement and also be deleted depending on the circumstances of manufacturing firms .
3. In case Wi-Fi signal strength is weakened, smart App may be disconnected. So make sure the indoor unit near to wireless router.
4. DHCP server function should be activated for wireless router.
5. The internet connection may fail because of a firewall problem. In this case, contact your internet service provider.
6. For smart phone system security and network setting, make sure Smart air conditioner APP is trusted.

Trouble Shooting

Description	Analysis of cause
Air conditioner can't be configured successfully	<ol style="list-style-type: none">1. Check the mobile connected WLAN router SSID and password is correct;2. Check whether there are additional settings of WLAN router as shown below.<ol style="list-style-type: none">1) Firewall by router itself or by PC2) MAC address filtering3) Hidden SSID4) DHCP server <p>Reboot WLAN router, mobile device and air conditioner (WLAN module) and connect air conditioner by CF mode again. Before rebooting, check nobody has already connected to same air conditioner.</p>
Mobile can't control air conditioner	<ol style="list-style-type: none">1. When air conditioner (WLAN module) is rebooted and app displays Device remove, ignoring this confirmation will lead to mobile device losing control permission of the air conditioner. You will need to connect the air conditioner by CF mode again.2. In case of power failure, mobile device will lose control permission of air conditioner for 3 minutes after power failure. (Notification will now show up on the mobile device.) If you cannot control the app (air conditioner) even after power restored, you will need to connect the air conditioner by CF mode again.
Mobile can't find air conditioner	<ol style="list-style-type: none">1. Smart Life App display Air conditioner Device offline. Please check the following conditions.<ol style="list-style-type: none">1) The air conditioner has been reconfigured.2) Air conditioner out of power.3) Router out of power.4) Air conditioner can't connect to router.5) Air conditioner can't connect to network through the router.6) Mobile device can't connect to network.2. After adding the device, it disappears in device list . Hold and slide down to refresh the device list. If it has no change, shut down the app and start again.

dzitsu

EUROFRED
being efficient

Eurofred S.A.
Marqués de Sentmenat 97
08029 Barcelona
www.eurofred.es