

daitsu

SERIE

WIFI SPLIT

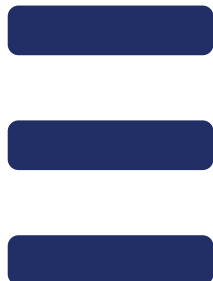
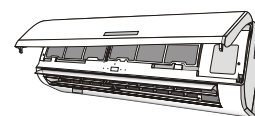
EDITION

R00



USER MANUAL

WI-FI



CONTENTS

Download the APP	1
Install the App	2
Activate QR code	2
Register user account	3
Login user account	3
Forget password	4
Add the device	4
Add the device (CF mode)	5
Add the device (AP mode)	6
Delete the device or Modify device name	7
Air conditioner control	8
Notice	12
Trouble Shooting	13

Download the APP

Please scan the QR code to download the latest App software.

Or download "Smart Life-smart home" from APP Store or Google Play.

The latest App software includes air conditioner, dehumidifier and Portable air conditioner.



For Android



For IOS



Service condition

Thank you for choosing our air conditioner.

This manual apply to the air conditioners which has Wi-Fi function.

Please read the manual carefully before using the product and keep it properly for further review.

Please do not unplug the Wi-Fi module by yourself.

For technical update, there may be deviation of the actual items from the manual.

We express our apologies. Please refer to the actual product.

Mention

FCC ID: 2AJCLTWAC-TYWFS

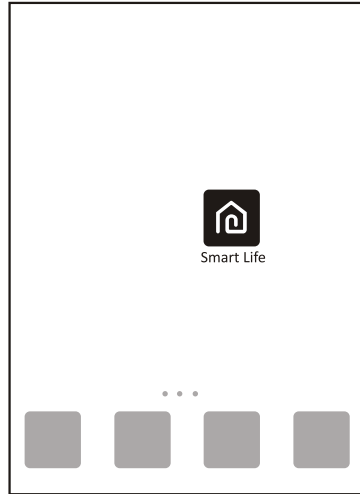
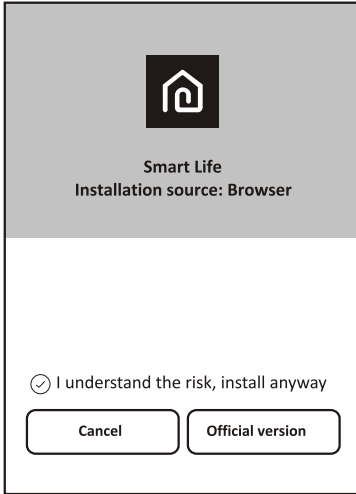
This device complies with Part 15 of the FCC Rules.

Operation is subject to the following two conditions:

- (1) this device may not cause harmful interference, and
- (2) this device must accept any interference received, including interference that may cause undesired operation.

Install the APP

When download the APP software, you can install it in your smart phone.
After installation, you can find the "Smart Life" icon on your phone desk.



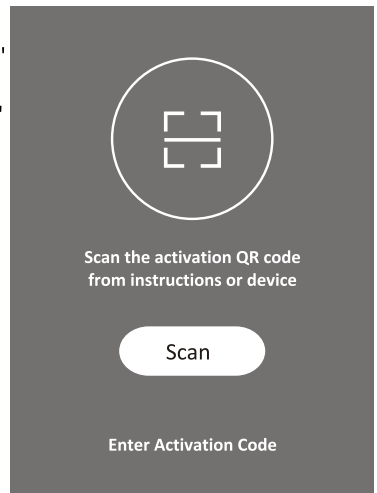
Activate QR code

1. When you first time enter the App, it will display activation interface, you can select scan activation QR code (click "Scan" button and scan the activation QR code in below page) or input "activation code" words (in below page), click "activate" button to active it.

2. Air conditioner activation QR code:



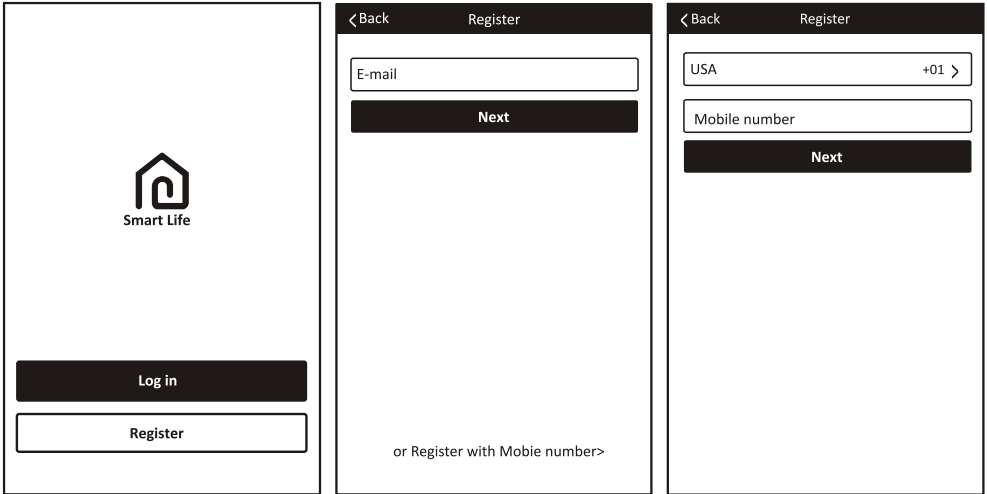
3. Air conditioner activation code WORDS:



Register user account

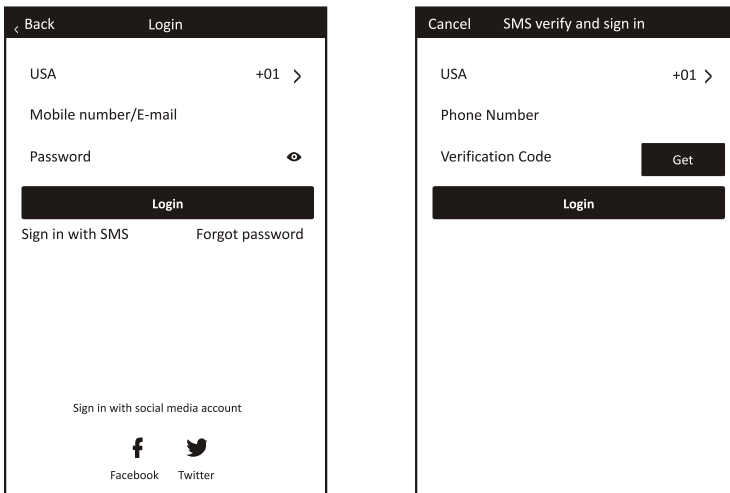
When you first time use the App, you need to register an account.

Click "Register" button to enter to the register interface. You can register with email or "Register with Mobile number".



Login user account

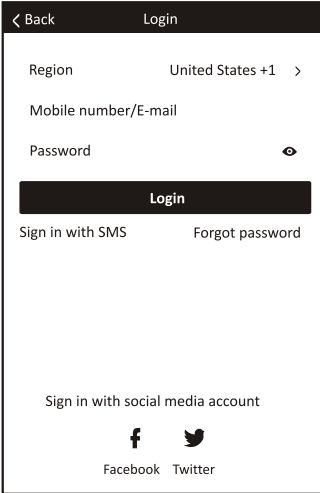
1. Register account login, fulfill the registered email or phone number account and password, press "Login" button.
2. Phone number login, press "Sign in with SMS" button to enter the next page, fulfill the phone number and press "get" button to receive the confirm code, and fill in, then press "Login" button.
3. You also can use the Facebook or Twitter account to login by the below part.



Forget password

If you forget the password, you can retrieve it by below process.

1. Press the "Forgot password" button to enter the next page.
2. Fulfill the registered phone number or email account, press "Next" button to enter the next page.
3. You will receive the verification code, fulfill it, and set the new password, press "confirm" button to finish.



Screen 1: Login

Region: United States +1 >

Mobile number/E-mail

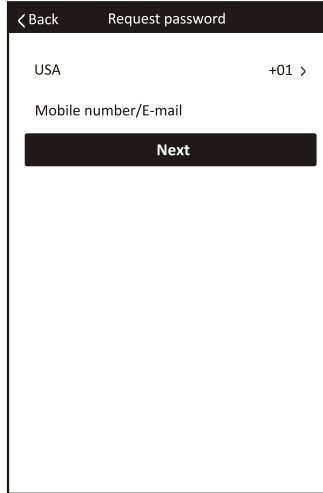
Password

Login

Sign in with SMS Forgot password

Sign in with social media account

Facebook Twitter

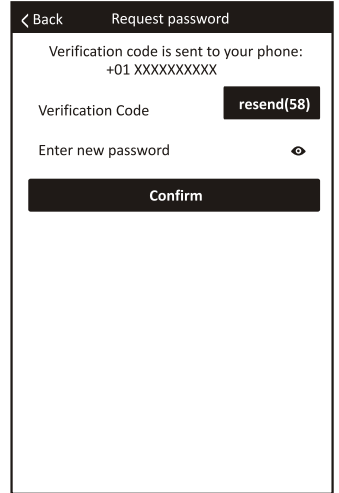


Screen 2: Request password

USA +01 >

Mobile number/E-mail

Next



Screen 3: Request password

Verification code is sent to your phone:
+01 XXXXXXXXXX

Verification Code **resend(58)**

Enter new password

Confirm

Add the device

1. Press "Add Device" button to next page, select the product type.
2. There are two methods to do the device match, "CF" or "AP mode".
You can choose by the different button.

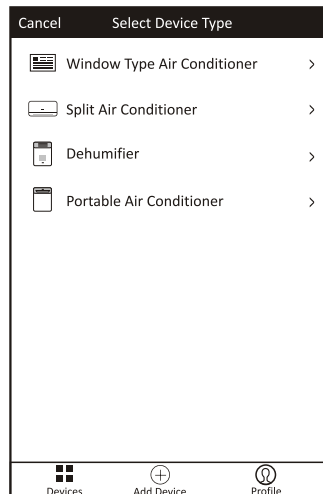


Screen 4: Devices

Empty device list

Add Device

Device Add Device Profile



Screen 5: Select Device Type

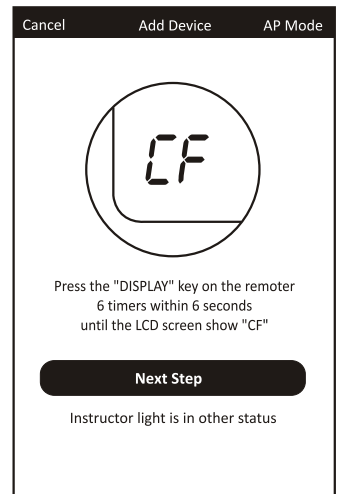
Window Type Air Conditioner >

Split Air Conditioner >

Dehumifier >

Portable Air Conditioner >

Devices Add Device Profile



Screen 6: Add Device AP Mode

CF

Press the "DISPLAY" key on the remote
6 times within 6 seconds
until the LCD screen show "CF"

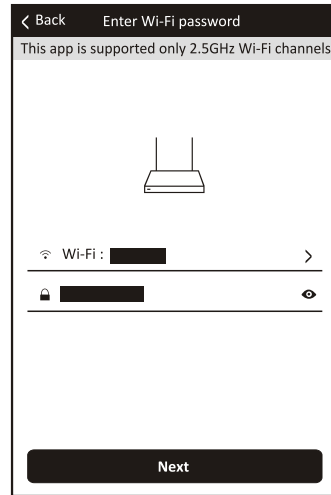
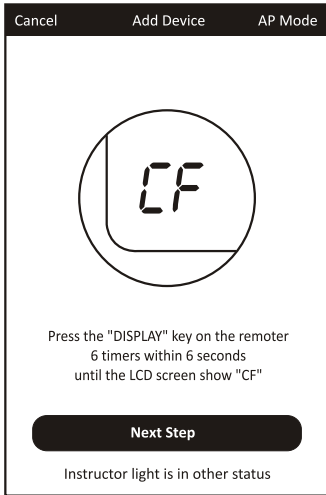
Next Step

Instructor light is in other status

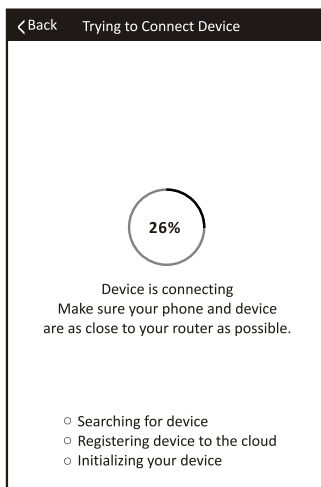
Add the device (CF mode)

For CF Mode

1. The system defaults to CF mode at first, Press "Next Step" to continue.
 2. Select the home router, and fulfill the password of router, press "Next" to continue.
- Note: Pressing "Display" 6 times means clean all registered information and returns to the initial state.



3. The APP software will automatically to do the device match. The unit screen may display "PP" or "SR", it means signal searching.
4. After match successfully, the page will display the prompt as below.
5. You can "Rename" the device name as you like, or share with family, or press "Done" to start to control the device.

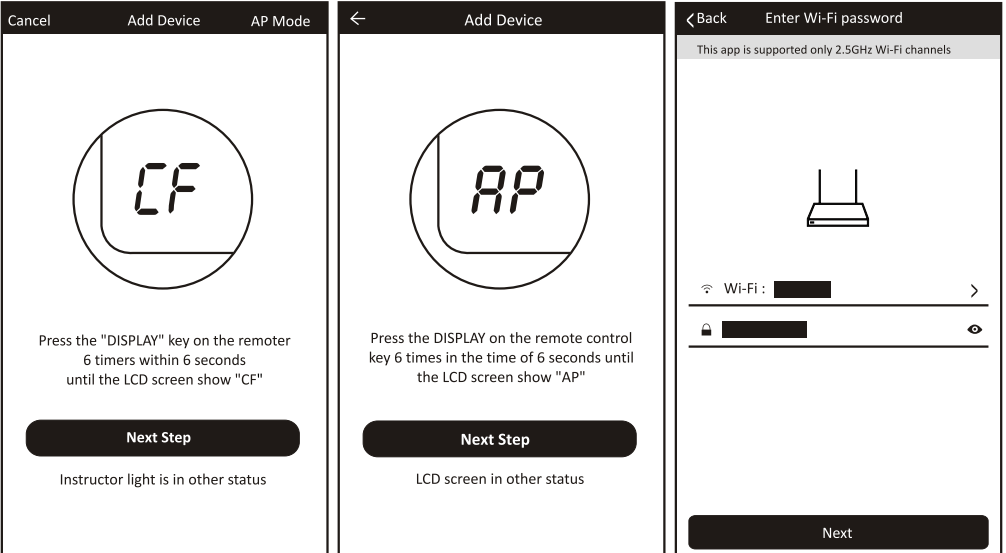


Add the device (AP mode)

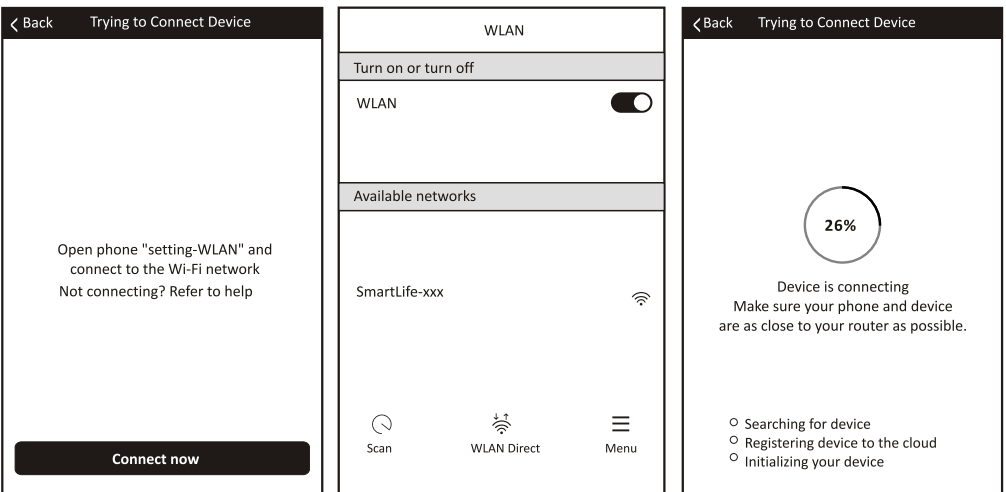
For AP mode

1. Click the "AP Mode" to the "AP" page. Press "Next Step" to continue.
2. Select the home router, fulfill the password, press "Next" to continue.

Note: Pressing "Display" 6 times means clean all registered information and returns to the initial state.



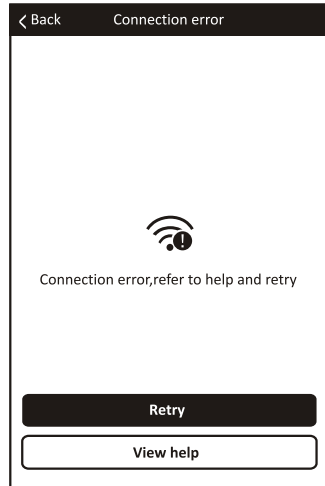
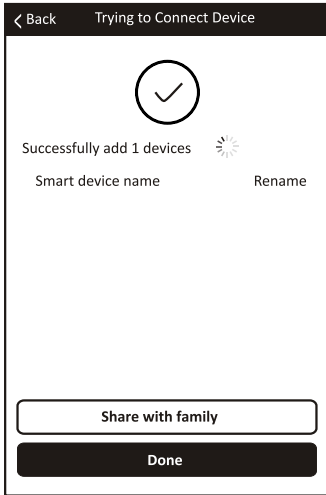
3. Select the AC Device as name "SmartLife-XXX" at the WLAN setting, then back to the APP interface. The APP will automatically do match. The unit screen may display "PP" or "SR", it means signal searching.



Add the device (AP mode)

4. After match successfully, the page will display the prompt as below.

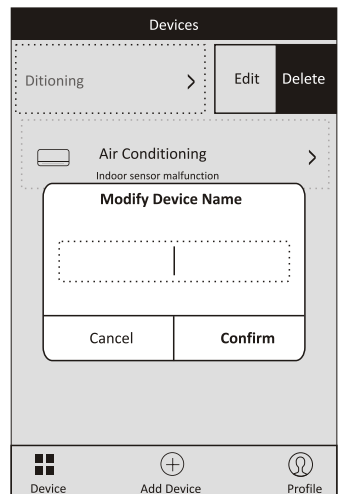
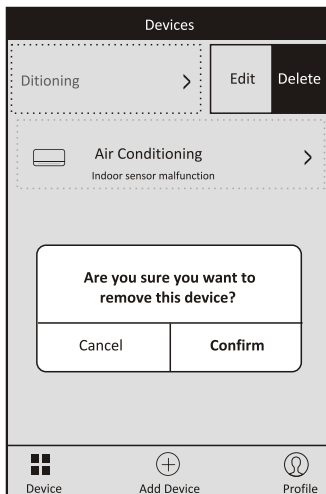
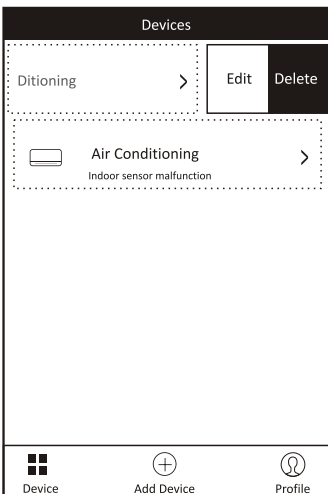
5. If match failed, the APP will mention it, and press "Retry" to try again.



Delete the device or Modify device name

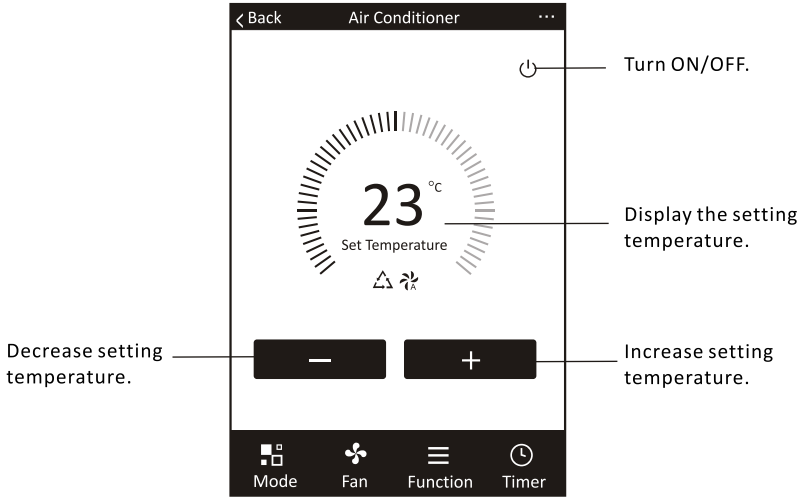
Go back to "Device list" page at first.

Slide the device name toward the left side, you can choose to delete it, or modify the device name as you like.



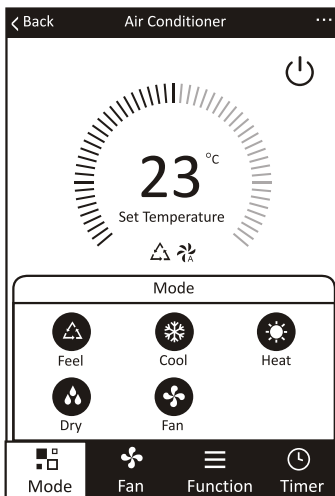
Air conditioner control

1. Click the air conditioner name to enter the control interface. Turn ON/OFF. Adjust the setting temperature.



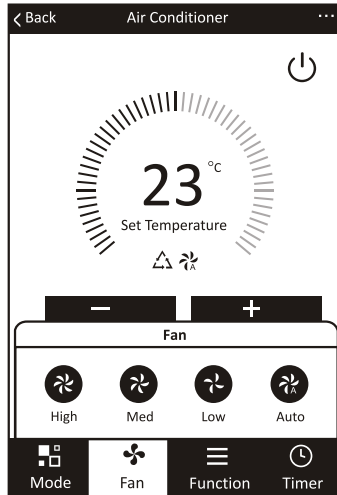
* For App update, there maybe deviation of the actual items from what is on the manual without prior notice. We express our apologies.

2. Adjust the different operating mode, Cool, Heat, Dry, Fan, Feel mode. Click the "Mode" button, and choose different running mode as you like. For the cooling only unit, the heat mode is no useful. For Dry mode, at the first 3 minutes, the APP temperature display may be little different from the unit display, caused by the unit temperature fast changing.



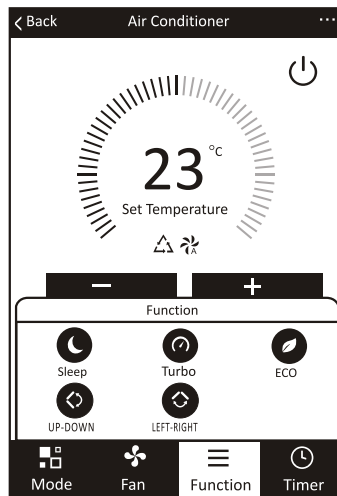
Air conditioner control

3. Click the "Fan" button, choose different fan speed, Low, Med, High, Auto.



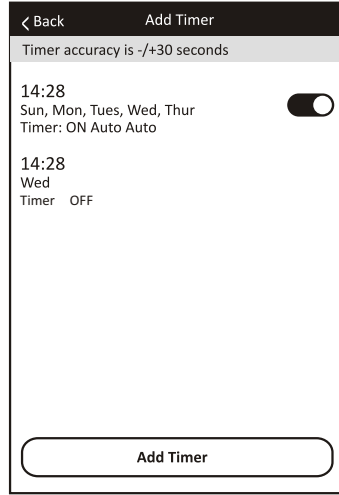
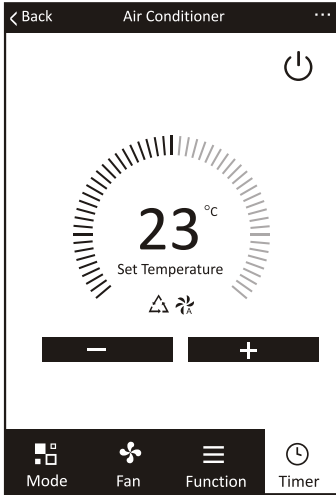
4. Other function control can be selected by "Function" button, Sleep, Turbo, ECO, UP-DOWN, LEFT-RIGHT.

When Sleep mode, the fan speed will be fixed to low speed.



Air conditioner control

5. Setting Timer function. Click the "Timer" button, the APP will enter to timer setting interface. It will display the task scheduler set before. You can longterm press to edit or build a new scheduler by "Add Timer" button.



6. Click "ON" or "OFF" button to set Timer ON or Timer OFF.

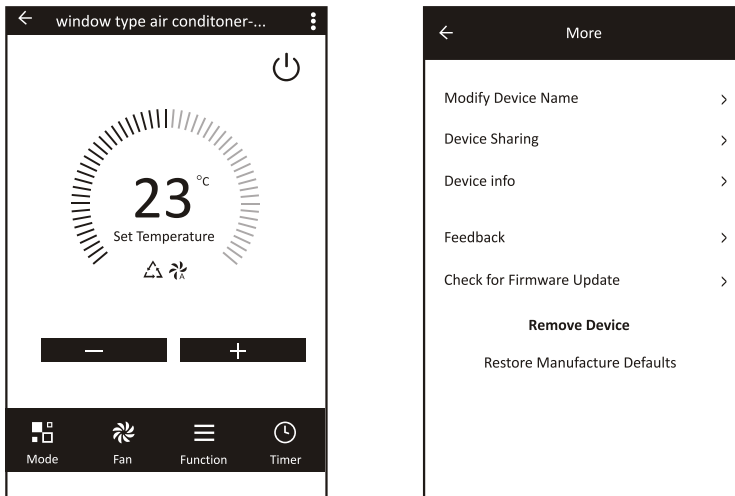
You can set Hour, Minute, operate Mode, operate Fan Speed, operate Temperature, also can set the weekly Timer.

After finish the setting, click the button to "Cancel" or "Save".

Timer cancel	Cancel	Add Timer	Save	Cancel	Add Timer	Save	Timer submit
	12	07		12	25		
	13	08		13	26		
	14	09		14	27		
Hour setting	15	10		15	28		Minute setting
	16	11		16	29		
	17	12		17	30		
	18	13		18	31		
	Timer Off			Select days to use Smart Mode			
	Timer On	<input checked="" type="checkbox"/>		Mon	Tues	Wed	Thur
Mode setting	Mode	Cool >		Fri	Sat	Sun	Weekly setting
Fan Speed setting	Fan	Auto >		Timer Off	<input checked="" type="checkbox"/>		Timer ON/OFF setting
Temperature setting	Set Temperature	23°C >		Timer On			
	Function	>					

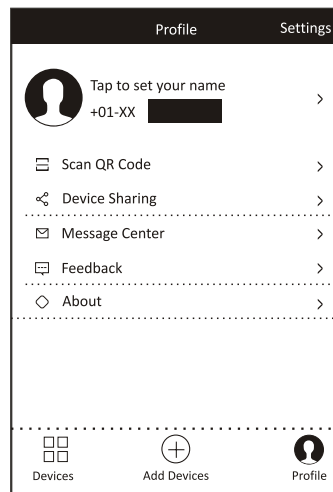
Air conditioner control

7. More setting. From the right-up corner, you can do more function setting, as Modify Device Name, Device Sharing, Device information, Feedback, Check for firmware update, Remove Device, Restore Manufacture setting.



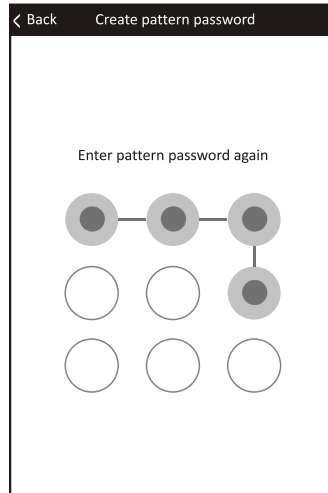
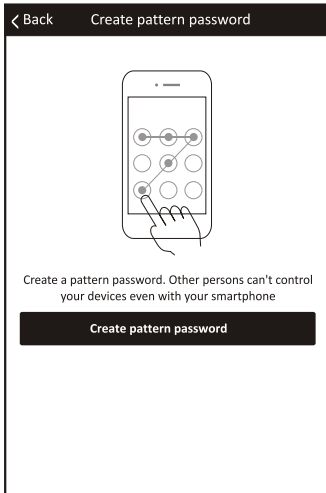
8. Profile. You can manage your personal information. It includes:
- a. Account information.
 - b. Scan QR code: Developers could preview the control interface.
 - c. Share Device: Display user's device sharing information.
 - d. Message Centre: Displays all messages that system sent to users.
 - e. Feedback: Where users could submit feedback online.
 - f. About: Displays the current App version information.

Note: The first registered phone is the main control, and other phones can only be shared through the main control phone. Different sharing accounts need to belong to the same country.



Air conditioner control

9. Pattern unlock. Tap "Pattern unlock" to set up your App unlock pattern.
After it is enabled, you need to draw the pattern to unlock the App.



Notice

FCC Caution.

This device complies with part 15 of the FCC Rules. Operation is subject to the following two conditions: (1) This device may not cause harmful interference, and (2) this device must accept any interference received, including interference that may cause undesired operation.

Any Changes or modifications not expressly approved by the party responsible for compliance could void the user's authority to operate the equipment.

Note: This equipment has been tested and found to comply with the limits for a Class B digital device, pursuant to part 15 of the FCC Rules. These limits are designed to provide reasonable protection against harmful interference in a residential installation. This equipment generates uses and can radiate radio frequency energy and, if not installed and used in accordance with the instructions, may cause harmful interference to radio communications. However, there is no guarantee that interference will not occur in a particular installation. If this equipment does cause harmful interference to radio or television reception, which can be determined by turning the equipment off and on, the user is encouraged to try to correct the interference by one or more of the following measures:

- Reorient or relocate the receiving antenna.
- Increase the separation between the equipment and receiver.
- Connect the equipment into an outlet on a circuit different from that to which the receiver is connected.
- Consult the dealer or an experienced radio/TV technician for help.

The distance between user and device should be no less than 20cm.

Trouble shooting

Description	Analysis of cause
Air conditioner can't be configured successfully	<ol style="list-style-type: none"> 1. Check the mobile connected Wi-Fi address and password is correct; 2. Check the air conditioner under configuration status; 3. There are any firewall or other restrictions have been set or not; 4. Check the router work normally; 5. Make sure air conditioner, router and mobile work within signal scope; 6. Check router shielding App or not;
Mobile can't control air conditioner	<p>Software display: Identification failed, It means the air conditioner has been reset, and the mobile phone lost control permission.</p> <p>You need to connect Wi-Fi to get permission again. Please connect the local network and refresh it. After all still can't work, please delete air conditioner and wait its refresh.</p>
Mobile can't find air conditioner	<p>Software display: Air conditioner out of line. Please check network working;</p> <ol style="list-style-type: none"> 1. The air conditioner has been reconfiguration; 2. Air conditioner out of power; 3. Router out of power; 4. Air conditioner can't connect to router; 5. Air conditioner can't connect to network through the router (under remote control mode); 6. Mobile can't connect to router(Under local control mode); 7. The mobile phone can't connect to network (under remote control mode).

