

UTY-DTGYZ1
UTY-DTGGZ1

富士通将军有限公司
FUJITSU GENERAL LIMITED

OPERATING MANUAL (simple)

TOUCH PANEL CONTROLLER

Keep this manual for future reference.

使用说明书 (简易)

触摸屏控制器

使用产品前请仔细阅读本使用说明书
请保留本说明书以供今后参考

BEDIENUNGSANLEITUNG

SENSORBILDSCHIRMSTEUERUNG

MODE D'EMPLOI

CONTRÔLEUR DE PANNEAU À CONTACT

MANUAL DE FUNCIONAMIENTO

CONTROLADOR DE PANEL DE CONTACTO

MANUALE DI ISTRUZIONI

DISPOSITIVO DI CONTROLLO DI PANNELLO A CONTATTO

ΕΓΧΕΙΡΙΔΙΟ ΛΕΙΤΟΥΡΓΙΑΣ

ΟΘΟΝΗ ΑΦΗΣ ΧΕΙΡΙΣΜΟΥ

MANUAL DE FUNCIONAMENTO

CONTROLADOR DE PAINEL DE TOQUE

РУКОВОДСТВО ПО ЭКСПЛУАТАЦИИ

КОНТРОЛЛЕР С СЕНСОРНОЙ ПАНЕЛЬЮ

KULLANIM KILAVUZU

DOKUNMATİK PANELLİ KUMANDA

دليل التشغيل

لوحة التحكم اللمسية

[Original instructions]



PART NO. 9378379077

English

中文

Deutsch

Français

Español

Italiano

Ελληνικά

Português

Русский

Türkçe

عربي

Contents

INTRODUCTION

■ SAFETY PRECAUTIONS

■ SYSTEM OUTLINE

- 1 Name of parts4
- 2 Password configuration.....4

INITIALIZATION

*Always initialize before using.

■ Initialization procedure 5

Chapter 1 MONITOR

■ 1-1 Monitor

- 1-1-1 Main screens of Monitor Mode6
- 1-1-2 Switching “Monitor Mode” screen display format7
- 1-1-3 Changing group display hierarchy8
- 1-1-4 Changing “Monitor Mode” screen display range8
- 1-1-5 Selecting and deselecting a R.C.Group / Group8
- 1-1-6 Selecting all R.C.Groups / Groups.....9
- 1-1-7 Deselecting all R.C.Groups / Groups9
- 1-1-8 Starting (On) operation of all R.C.Groups / Groups9
- 1-1-9 Stopping (Off) operation of all R.C.Groups / Groups9
- 1-1-10 Starting (On) operation of selected R.C.Group / Group 10
- 1-1-11 Stopping (Off) operation of selected R.C.Groups / Groups 10
- 1-1-12 Expanding the name display of R.C.Group / Group 10
- 1-1-13 Checking the error list when an error occurs 10
- 1-1-14 Selecting the R.C.Groups / Groups to be controlled..... 11

Chapter 2 CONTROL

■ 2-1 Control

- 2-1-1 Main screens of Control 12
- 2-1-2 Setting operation On/Off..... 13
- 2-1-3 Setting the operation mode..... 13
- 2-1-4 Setting the temperature 13
- 2-1-5 Setting the fan (air flow) 14
- 2-1-6 Setting R.C. Prohibition..... 14
- 2-1-7 Displays “Optional Setting” screen 14
- 2-1-8 Setting “Air Flow Direction (up/down)” 15
- 2-1-9 Setting “Air Flow Direction (Right/Left)” 15
- 2-1-10 Setting “Economy” operation 15
- 2-1-11 Setting “Anti Freeze” operation 15
- 2-1-12 Resetting “Filter Sign” 16
- 2-1-13 Test operation..... 16
- 2-1-14 Checking “Special State” of R.C.Groups / Groups 16
- 2-1-15 Ending setting of “Optional Setting” screen.... 17
- 2-1-16 Ending “Operation Setting” 17
- 2-1-17 Displaying “User Setting/ History” screen ... 17
- 2-1-18 Displaying “Schedule Setting” screen 18

Chapter 3 SETTING

Items with * mark are initialization items.

■ 3-1 Language setting

- * 3-1-1 Start system initialization 19
- 3-1-2 After system initialization 19

■ 3-2 Date setting

- 3-2-1 Main screens of date setting.....20
- * 3-2-2 Setting the current date and time.....21
- * 3-2-3 Selecting the date display format.....21
- * 3-2-4 Selecting the time display format.....21
- 3-2-5 Setting the summer time22
 - When setting the summer time manually ...22
 - When setting the summer time automatically.....22
- 3-2-6 Setting Automatic System Clock Adjustment.23

3-2-7	Adjusting the system clock manually	24
-------	---	----

■ 3-3 Group setting 24

■ 3-4 Schedule Setting..... 24

■ 3-5 Password Setting..... 24

■ 3-6 Installer setting

3-6-1	Main screens of Installer Setting	25
* 3-6-2	Installer setting	27
* 3-6-3	Setting the address of the touch panel controller main unit.....	27
* 3-6-4	Setting the name of the touch panel controller main unit	28
* 3-6-5	Registering the units	28
* 3-6-6	Registering indoor units in refrigerant system address order	29
* 3-6-7	Registering indoor units in operation order	30
* 3-6-8	Changing the registered indoor units sequence	31
* 3-6-9	Adding indoor unit registration	32
3-6-10	Deleting registered indoor units	32
3-6-11	Registering indoor units by external input data	33
3-6-12	Exporting indoor unit registration data	34
3-6-13	Registering the Electricity Meter.....	34
3-6-14	Editing the system configuration file of the touch panel controller by PC.....	35
3-6-15	Setting the external input signal	37
	■ Setting which emergency-stops the system by external input signal.....	37
	■ Setting which turns the system "All On/All Off" by external input signal	37
	■ Setting the electricity meter by external input signal.....	38
	■ Disabling operation setting by external input signal.....	38
3-6-16	Setting the temperature display unit	38
	■ Setting the temperature display unit	39
3-6-17	Setting the settable temperature range	39
	■ Setting the settable temperature range ...	39
	■ Setting the settable temperature range for each operation mode	40
	■ Disabling settable temperature range setting	40

3-6-18	Setting the remote controller operation prohibition	40
3-6-19	Changing the installer setting password.....	41
3-6-20	Setting the option registration	42

■ 3-7 Network setting

3-7-1	Main screens of network setting	42
-------	---------------------------------------	----

■ 3-8 Low noise operation

3-8-1	Main screens of low noise operation	43
3-8-2	Setting operation for low noise setting	44
3-8-3	Setting schedule of low noise setting	45

■ 3-9 Time zone setting

* 3-9-1	Setting the time zone	46
---------	-----------------------------	----

Chapter 4 PREFERENCE SETTING

■ 4-1 Preference Setting 47

Chapter 5 HISTORY

■ 5-1 History Display..... 47

Chapter 6 OTHERS

■ 6-1 Outline dimensions 47

■ 6-2 Specifications 48


■ 6-3 Error code 48


INTRODUCTION

For the description of system outline, composition of screens, terminology, and applied operation, refer to the OPERATING MANUAL in the CD-ROM.

■ SAFETY PRECAUTIONS

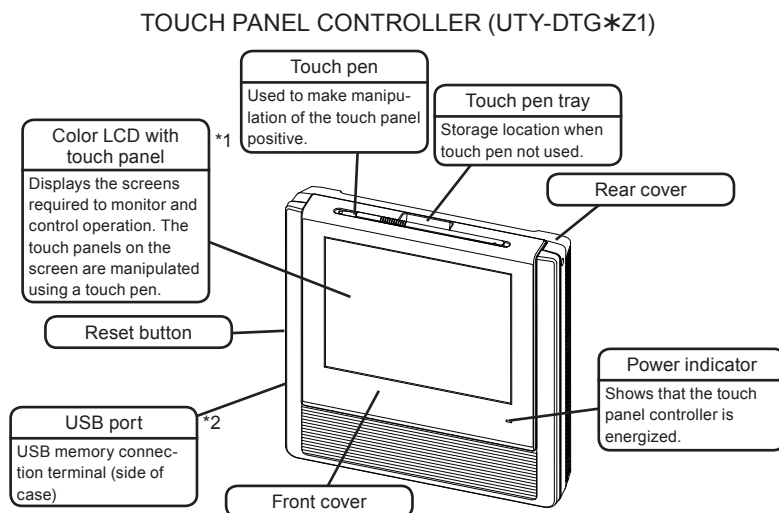
- The "SAFETY PRECAUTIONS" indicated in the manual contain important information pertaining to your safety. Be sure to observe them.
- For details of the operation methods, refer to this manual.
- Request the user to keep the manual on hand for future use, such as for relocating or repairing the unit.

 WARNING	<p>This mark indicates procedures which, if improperly performed, might lead to the death or serious injury of the user.</p>
<ul style="list-style-type: none"> • In the event of a malfunction (burning smell, etc.), immediately stop operation, turn off the electrical breaker, and consult authorized service personnel. 	
<ul style="list-style-type: none"> • Do not repair or modify any damaged cable by yourself. Let the authorized service personnel to do it. Improper work will cause a electric shock or a fire. 	
<ul style="list-style-type: none"> • This unit contains no user-serviceable parts. Always consult authorized service personnel for repairs. 	
<ul style="list-style-type: none"> • When moving, consult authorized service personnel for disconnection and installation of this unit. 	
<ul style="list-style-type: none"> • Do not touch with wet hands. It may cause an electric shock. 	
<ul style="list-style-type: none"> • If children may approach the unit, take preventive measures so that they cannot reach the unit. 	
<ul style="list-style-type: none"> • Do not repair or modify by yourself. It may cause a fault or accident. 	
<ul style="list-style-type: none"> • Do not use flammable gases near the unit. It may cause a fire from leaking gas. 	

 CAUTION	<p>This mark indicates procedures which, if improperly performed, might possibly result in personal harm to the user or damage to property.</p>
<ul style="list-style-type: none"> • Do not set vessels containing a liquid on this unit. Doing so will cause heating, fire or electric shock. 	
<ul style="list-style-type: none"> • Do not expose this unit directly to water. Doing so will cause trouble, electric shock or heating. 	
<ul style="list-style-type: none"> • Dispose of the packing materials safely. Tear and dispose of the plastic packing bags so that children cannot play with them. There is the danger of suffocation if children play with the original plastic bags. 	
<ul style="list-style-type: none"> • Do not place electrical devices within 1 meter of this unit. It may cause malfunction or failure. 	
<ul style="list-style-type: none"> • Do not use fire near this unit or place a heating apparatus nearby. It may cause malfunction. 	
<ul style="list-style-type: none"> • Do not touch the switches with sharp objects. Doing so will cause injury, trouble, or electric shock. 	
<ul style="list-style-type: none"> • Do not insert articles into the slit parts of this unit. Doing so will cause trouble, heating, or electric shock. 	
<ul style="list-style-type: none"> • Do not operate the surface of the touch panel with other than the accessory touch pen or your finger. It will scratch the surface and cause trouble. 	

■ SYSTEM OUTLINE

1 Name of parts



Note

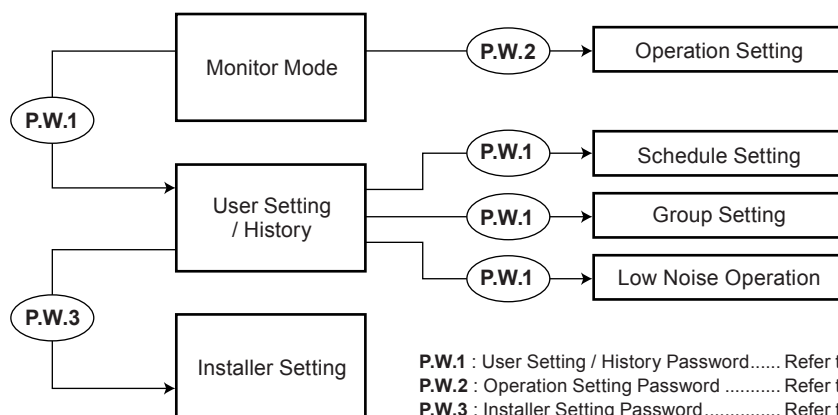
*1 Touch panel screen operation precaution: Operate the touch panel screen so that it is touched and released perpendicularly with the accessory touch pen (or your finger). If it is released obliquely, it may not work properly.

Notes

- *2 Some USB memories may not be recognized by the touch panel controller. When not recognized, press the reset button after disconnecting the USB memory from the touch panel controller.
- Use a USB memory without "Write prohibited switch".
- Use FAT16 or FAT32 as the USB memory format.

2 Password configuration

The kinds and relationship of passwords which can be set at this controller are as follows:



INITIALIZATION

■ Initialization procedure

After touch panel controller installation work is complete, perform initialization using the following procedures before starting to use the system.

Turning on the power



Date setting

Always set the items shown below.

3-1 Language setting

3-1-1 Start system initialization 19

3-1-2 After system initialization 19

3-2 Date setting

3-2-2 Setting the current date and time..... 21

3-2-3 Selecting the date display format..... 21

3-2-4 Selecting the time display format..... 21

3-9 Time zone setting

3-9-1 Setting the time zone 46



Installer setting

Always set the items shown below.

3-6 Installer setting

3-6-2 Installer setting 27

3-6-3 Setting the address of the touch panel controller main unit..... 27

3-6-4 Setting the name of the touch panel controller main unit..... 28

*Register the indoor unit by 1 of the methods from 3-6-5 to 3-6-8.

3-6-5 Registering the units 28

3-6-6 Registering indoor units in refrigerant system address order 29

3-6-7 Registering indoor units in operation order 30

3-6-8 Changing the registered indoor units sequence 31

3-6-9 Adding indoor unit registration..... 32



Initialization end



When initialization ends, the user setting and history screens are displayed.

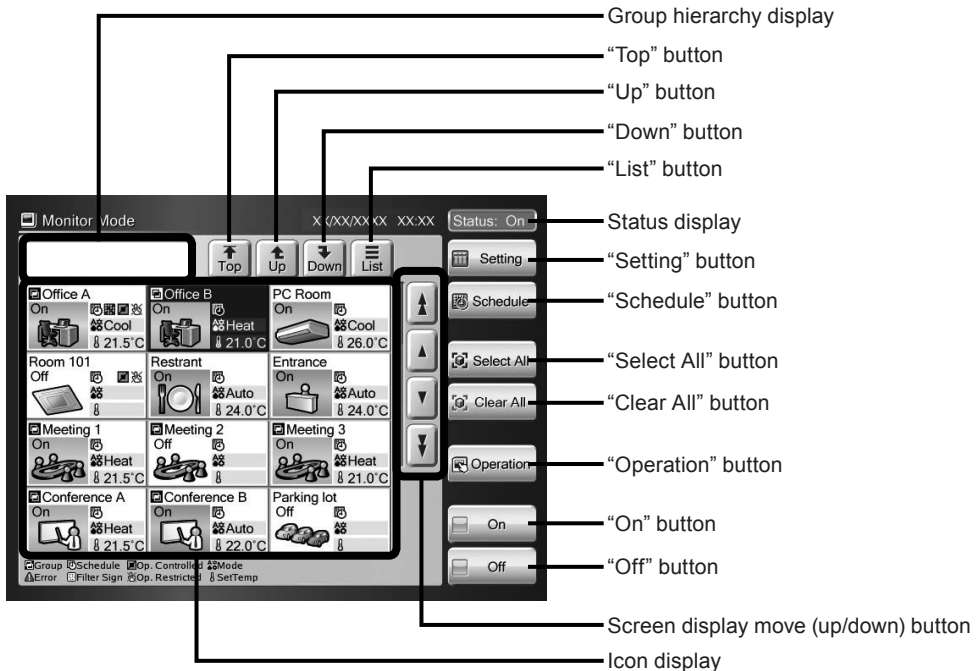
Operation start preparations complete

Chapter 1 MONITOR

1-1 Monitor

1-1-1 Main screens of Monitor Mode

Monitor Mode (Icon)

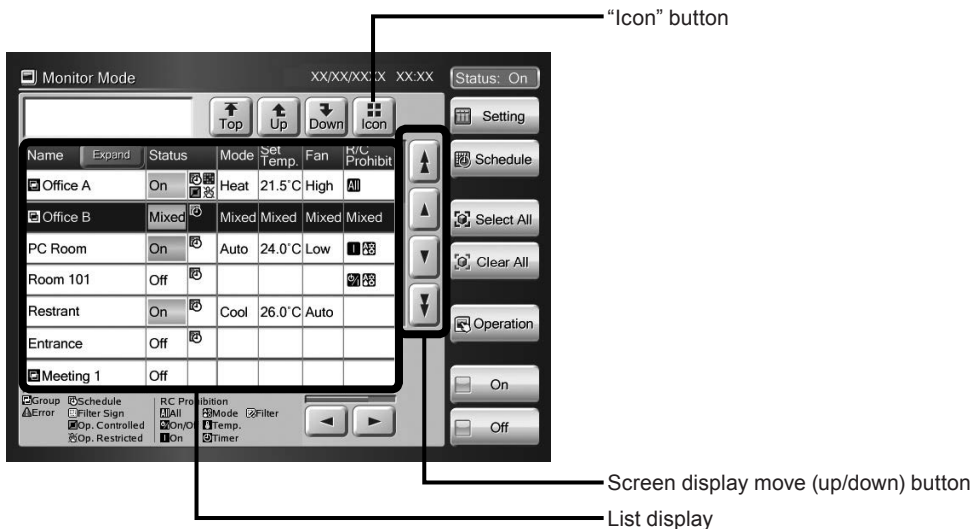


Notes

"Status" status display list

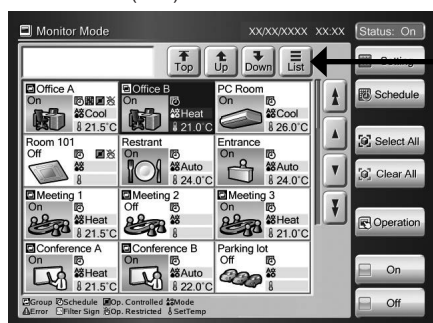
Status On	Indoor units in the system operate.
Status Off	All indoor units in the system are stopped.
Status Error	An error occurred at 1 or more units in the system.
Emergency Stop	1 or more indoor units in the system are emergency-stopped.

Monitor Mode (List)



1-1-2 Switching “Monitor Mode” screen display format

Monitor Mode (Icon)

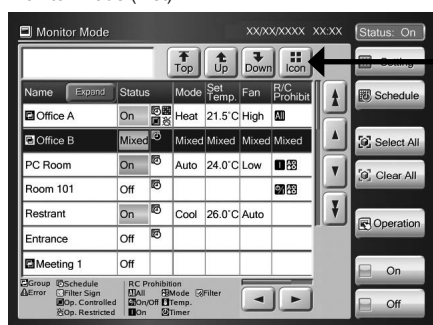


- Switches “Monitor Mode” screen to “Icon” or “List”.

1 When “Monitor Mode” screen is “Icon” display screen, click “List” button.

- ◆ “Monitor Mode” screen becomes “List” display.

Monitor Mode (List)



2 When “Monitor Mode” screen is “List” display screen, click “Icon” button.

- ◆ “Monitor Mode” screen becomes “Icon” display.

Notes

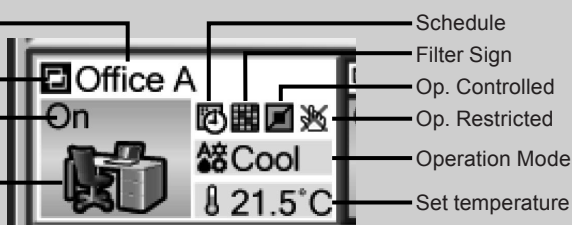
Description of “Icon” display

“R.C. Group” / “Group” Name

Group

On/Off

“R.C. Group” / “Group” Icon



Notes

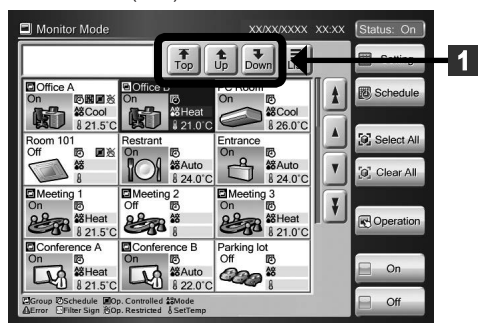
“Icon” Display List

Icon	Name	Content
	Group	Group
	Error	Error
	Cool/Dry (Light blue)	Cooling or Drying
	Auto/Fan (Light Purple)	Automatic or fan operation
	Heat (Light Pink)	Heating
	Mixed (Light Gray)	Multiple operation modes are mixed in the same group.
	Schedule	Schedule timer is set.
	Filter Sign	Filter cleaning alarm sign
	Op. Controlled	Indoor units and outdoor units operation mode is under control.
	Op. Restricted	Operation is restricted by any function.

Icon	Name	Content
	Mode	Operation mode
	Set. Temp.	Set temperature
	All	Standard remote controller all operations prohibited
	On/Off	Standard remote controller ON/Off operation prohibited
	On	Standard remote controller ON operation prohibited
	Mode	Standard remote controller operation mode setting prohibited
	Temp.	Standard remote controller temperature setting operation prohibited
	Timer	Standard remote controller timer setting operation prohibited
	Filter	Standard remote controller filter reset operation prohibited

1-1-3 Changing group display hierarchy

Monitor Mode (Icon)



- 1 Use when changing the hierarchy of the group displayed on "Monitor Mode" screen.

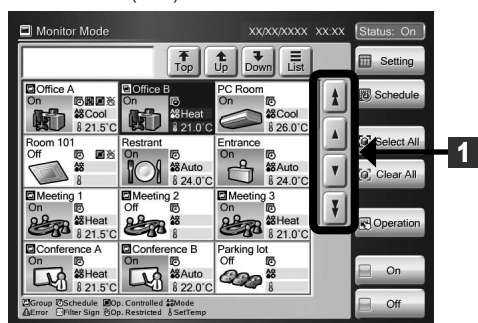
Notes

The following 3 buttons move the group hierarchy screen.

	Moves to the hierarchy at the top of the screen
	Moves the screen to the next higher hierarchy
	Moves the screen to the next lower hierarchy

1-1-4 Changing "Monitor Mode" screen display range

Monitor Mode (Icon)



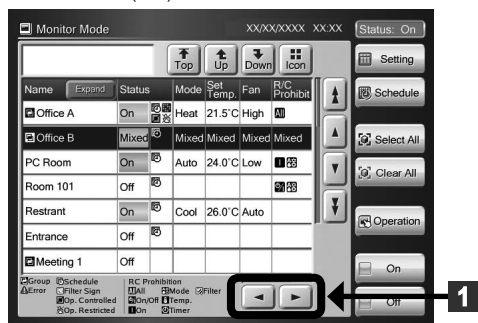
- 1 Scroll the screen using the up/down and left/right buttons on "Monitor Mode" screen. Check the items which cannot be displayed on 1 screen by scrolling.

Notes

The following 6 buttons scroll the screen.

	Scrolls the screen up in page units.
	Scrolls the screen down in page units.
	Scrolls the screen up 1 line at a time.
	Scrolls the screen down 1 line at a time.
	Scrolls the screen to the left 1 column at a time. (Effective for list display only)
	Scrolls the screen to the right 1 column at a time. (Effective for list display only)

Monitor Mode (List)



1-1-5 Selecting and deselecting a R.C.Group / Group

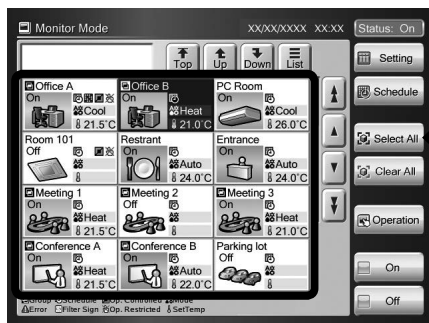
Monitor Mode (Icon)



- 1 Select the relevant R.C.Group / Group.
 - ◆ The selected R.C.Group / Group becomes the selected state (blue).
 - When re-selected in the selected state (blue), the selection is deselected.

1-1-6 Selecting all R.C.Groups / Groups

Monitor Mode (Icon)



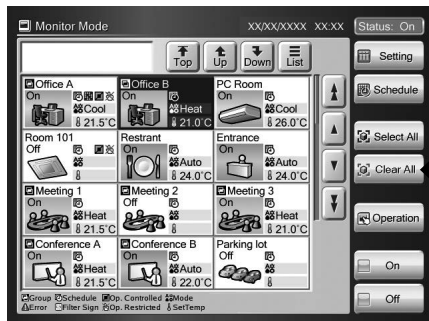
- Select all the R.C.Groups / Groups on “Monitor Mode” screen.

1 Click “Select All” button.

- ◆ All the selected R.C.Groups / Groups becomes the selected state (blue).

1-1-7 Deselecting all R.C.Groups / Groups

Monitor Mode (Icon)



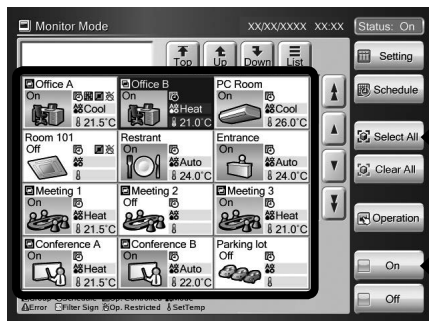
- Deselect all the R.C.Groups / Groups on “Monitor Mode” screen.

1 Click “Clear All” button.

- ◆ All the selected R.C.Groups / Groups become the deselected state.

1-1-8 Starting (On) operation of all R.C.Groups / Groups

Monitor Mode (Icon)



1 Click “Select All” button.

- ◆ All R.C.Groups / Groups on “Monitor Mode” screen are selected (blue).

2 Click “On” button.

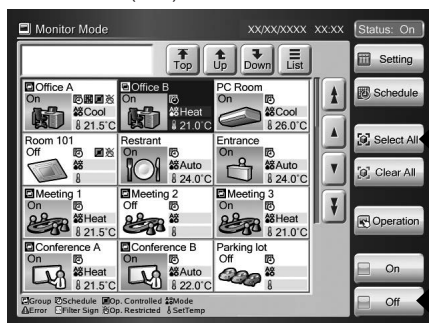
- ◆ Operation of all the selected R.C.Groups / Groups starts.

Note

When a password is set at “Operating Setting”, the password must be input.

1-1-9 Stopping (Off) operation of all R.C.Groups / Groups

Monitor Mode (Icon)



1 Click “Select All” button.

- ◆ All R.C.Groups / Groups on “Monitor Mode” screen are selected (blue).

2 Click “Off” button.

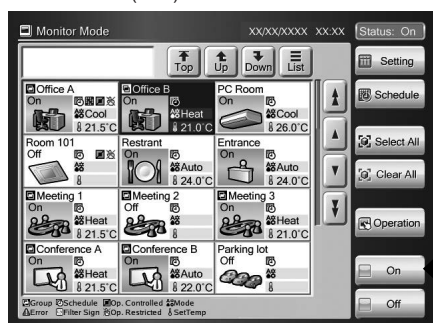
- ◆ Operation of all the selected R.C.Groups / Groups stops

Note

When a password is set at “Operating Setting”, the password must be input.

1-1-10 Starting (On) operation of selected R.C.Group / Group

Monitor Mode (Icon)



- Select the relevant R.C.Groups / Groups from R.C.Group / Group on "Monitor Mode" screen.
- ◆ The R.C.Groups / Groups become the selected state (blue).

1 Click "On" button.

- ◆ The indoor units start to operate under the preset conditions.

Note

When a password is set at "Operating Setting", the password must be input.

1-1-11 Stopping (Off) operation of selected R.C.Groups / Groups

Monitor Mode (Icon)



- ◆ Select the relevant R.C.Groups / Groups from R.C.Group / Group operating on "Monitor Mode" screen.
- ◆ The R.C.Groups / Groups become the selected state (blue).

1 Click "Off" button.

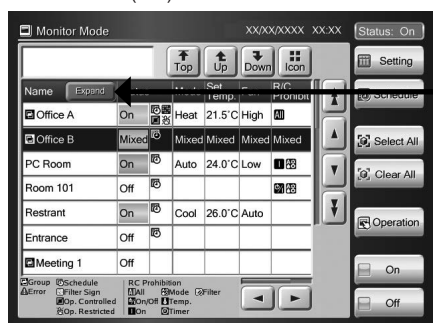
- ◆ Operation of the selected R.C.Groups / Groups stops.

Note

When a password is set "Operating Setting", the password must be input.

1-1-12 Expanding the name display of R.C.Group / Group

Monitor Mode (List)



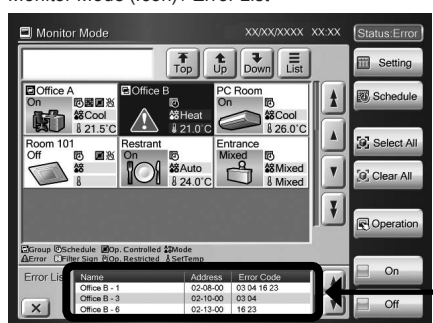
- When the name of the R.C.Group / Group is longer than the display area on "List" screen, expand the display frame to display the entire name.

1 Click "Expand" button.

- The name display frame is expanded and the entire name is displayed.
To return the display to its original state, click "Reduce" button.

1-1-13 Checking the error list when an error occurs

Monitor Mode (Icon) / Error List

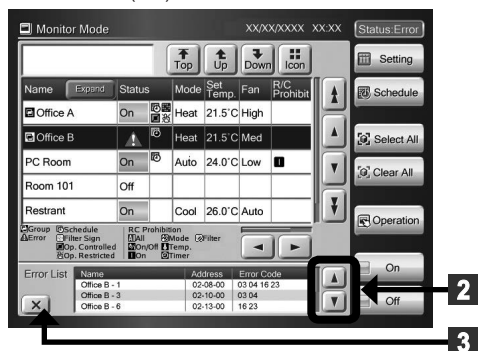


1 When an error occurs, "Error List" window opens at the bottom of monitor mode screen.

Note

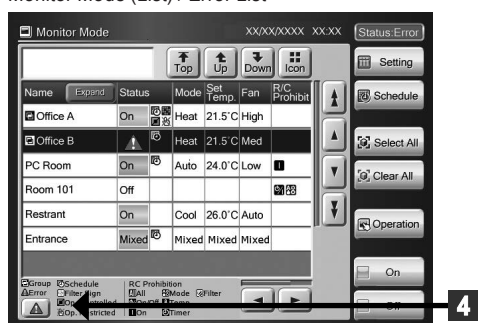
The 3 items "Name", "Address", and "Error Code" are displayed in "Error List" window. The items are displayed in both "Icon" Display and "List" Display. However, if there is not even 1 error, "Error List" window is not displayed.

Monitor Mode (List) / Error List



- 2 When there is a display hidden at the top or bottom of “Error List” window, scroll the list display up or down by clicking “▲” or “▼” button.
- 3 To close “Error List” window, click “X” button.

Monitor Mode (List) / Error List



- 4 When “Error List” button is clicked, “△” window is re-opened.

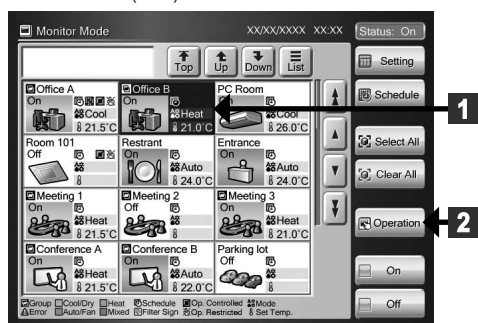
Note

“Error List” button is displayed when “Error List” window was closed.

- “Error List” button is continuously displayed until the error is resolved.

1-1-14 Selecting the R.C.Groups / Groups to be controlled

Monitor Mode (Icon)



- Control the R.C.Groups / Groups on “Monitor Mode” screen.

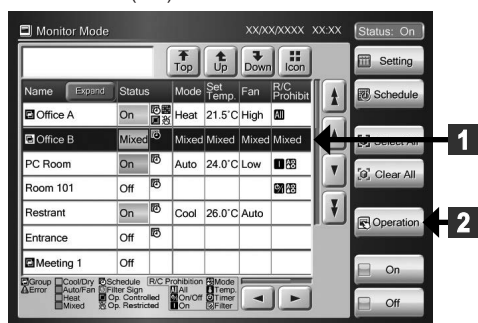
- 1 Select the relevant R.C.Groups / Groups from R.C.Group / Group operating on “Monitor Mode” screen.
 - ◆ The R.C.Groups / Groups become the selected state (blue).

Note

When a password is set at “Operation Setting”, the password must be input.

- 2 Click “Operation” button.
 - ◆ “Operation Setting” screen opens.

Monitor Mode (List)

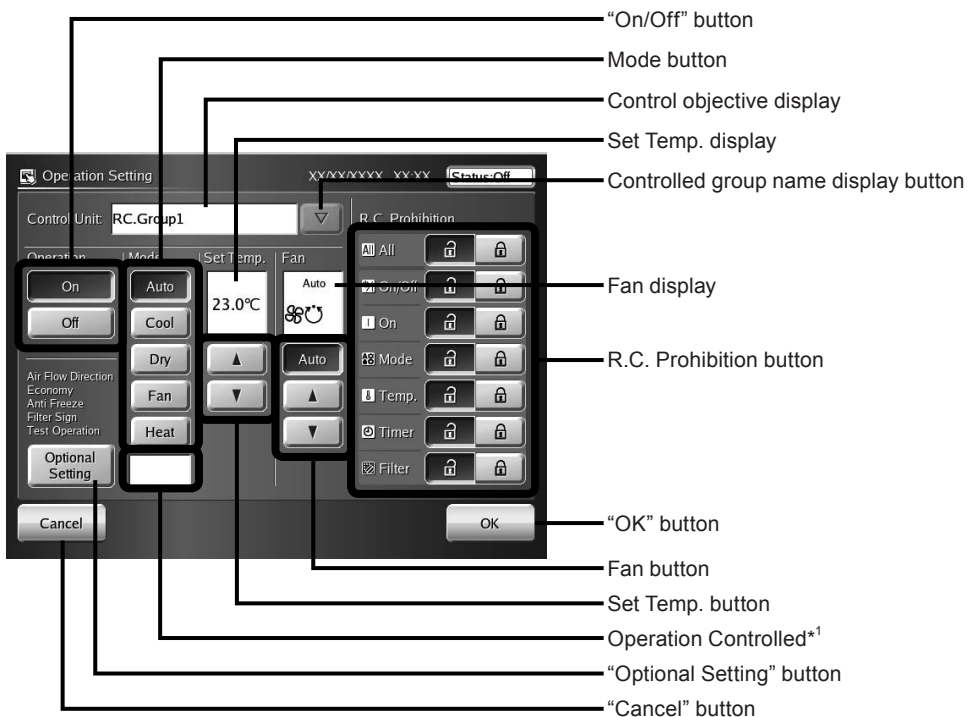


Chapter 2 CONTROL

2-1 Control

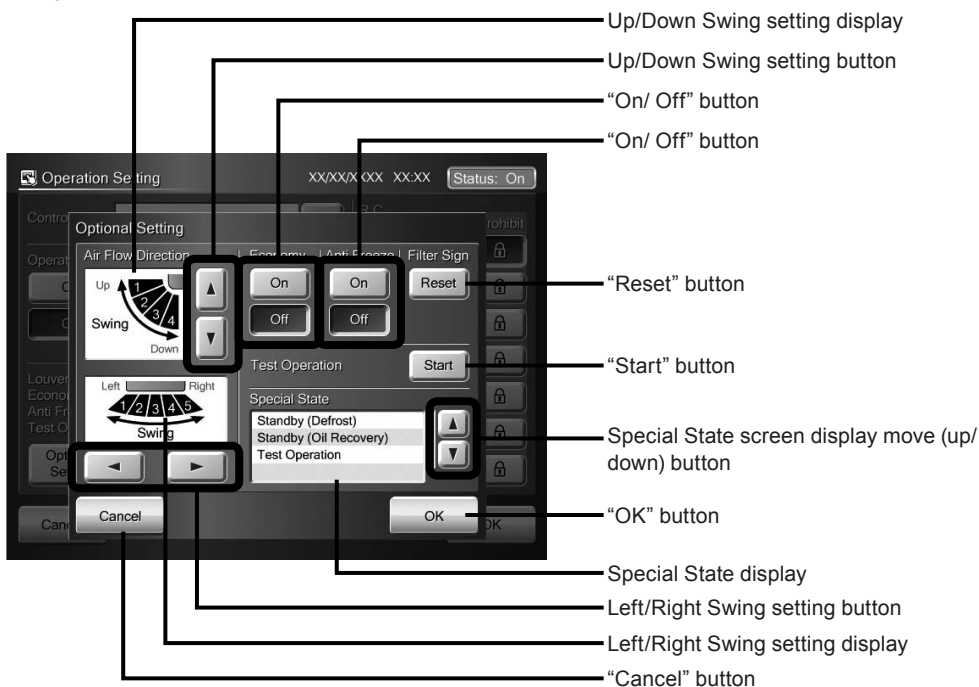
2-1-1 Main screens of Control

Operation Setting



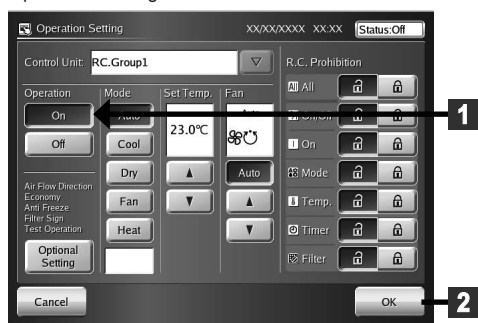
*1. Displays when operation mode is controlled by master unit.

Optional Setting



2-1-2 Setting operation On/Off

Operation Setting



- 1 Click "On" button.
 - Operation start setting of the selected (blue) indoor units is performed. When "Off" button is clicked, operation stop setting is performed.

- 2 Click "OK" button.

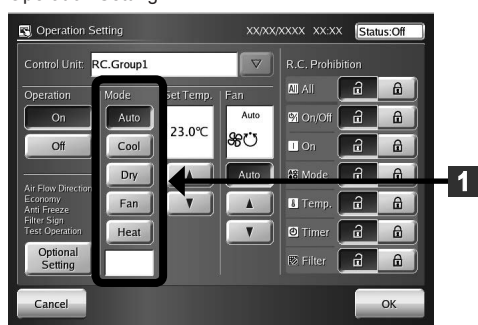
◆ The set contents are executed.

Note

When "▽" button at "Control Unit" on "Operation Setting" screen is clicked, selected R.C.Group / Group is displayed (When two or more "R.C.Group" and "Group" are selected, the operation can be performed.).

2-1-3 Setting the operation mode

Operation Setting



- 1 Click the mode button to be selected.

Note

When the function does not exist at the objective unit, setting cannot be selected. Buttons with their operation prohibited cannot be clicked.

Note

When "Operation Controlled" is displayed, there is no cooling and heating selection right.

2-1-4 Setting the temperature

Operation Setting



- 1 Select the set temperature using "▲" button and "▼" button. Check the set temperature at the display section.

Note

When the "▲" button or "▼" button is pressed, Celsius display increases and decreases in 0.5°C steps and Fahrenheit display increases and decreases in 1°F steps.

Note

The heating set temperature range of 10°C to 15°C (48°F to 58°F) may not be settable, depending on the indoor unit model.

Notes

Here, the settable temperature range is different for each operation mode.

For the settable temperature ranges, see "Setting settable temperature range".

Temperature unit	Celsius (°C)	Fahrenheit (°F)
Set temperature (Auto, Cool, Dry)	18°C-30°C	64°F - 88°F
Set temperature (Heat)	10°C-30°C	48°F - 88°F

2-1-5 Setting the fan (air flow)

Operation Setting



- 1 Set the fan (airflow) by using the “▲” button, “▼” button, and "Auto" button.

Note

In "Fan" operation section, airflow switching steps are different depending on the indoor unit type to be operated. For details, refer to the indoor unit operating manual.

2-1-6 Setting R.C. Prohibition

Operation Setting



- This setting centrally controls air conditioning equipment by prohibiting operation from the standard remote controllers connected to each R.C.Group / Group.

- 1 Select the control item whose operation from a remote controller is to be prohibited and click the button.

Note

The items which can be selected are the 7 items "All", "On/ OFF", "On", "Mode", "Temp.", "Timer", and "Filter".

Note

In a state that control item button cannot be pressed, there is no setting authority. Check with the manager.

Notes

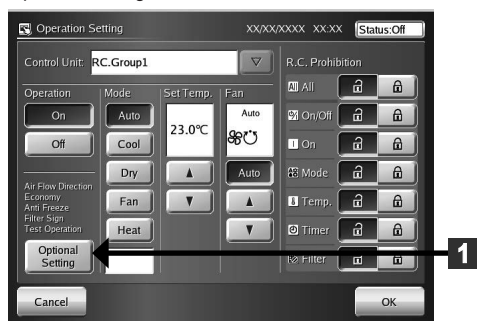
The function which can be set here has the following contents.

R.C. Prohibition	Contents
All	Operation of all control functions are enabled or disabled.
On/Off	"On/Off" operation is enabled or disabled.
On	"On" operation is enabled or disabled.
Temp.	"Temperature setting" operation is enabled or disabled.

R.C. Prohibition	Contents
Mode	"Operation mode setting" is enabled or disabled.
Timer	"Timer setting" operation of remote controller is enabled or disabled.
Filter	"Filter reset" operation is enabled or disabled.

2-1-7 Displays "Optional Setting" screen

Optional Setting

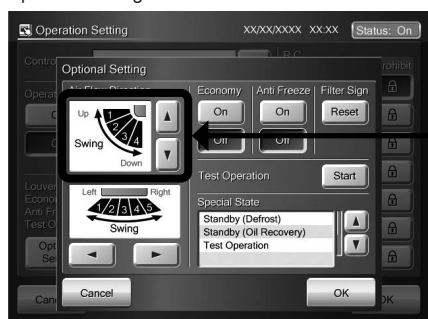


- 1 Click "Optional Setting" button.

- ◆ "Optional Setting" screen opens.

2-1-8 Setting “Air Flow Direction (up/down)”

Optional Setting



- 1 Set the up and down swing angle using “▲” button and “▼” button.

→ 1 ↔ 2 ↔ 3 ↔ 4 ↔ SWING ←

Note

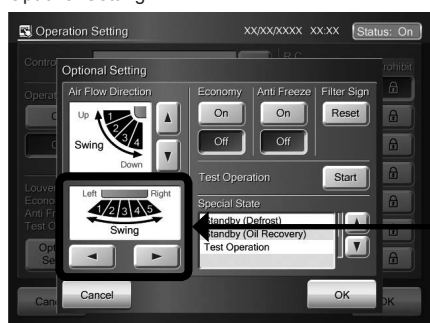
When the function does not exist at the objective unit, setting cannot be selected.

Note

4 swing angles (1 to 4) can be selected at “Up/Down Swing” operation section.

2-1-9 Setting “Air Flow Direction (Right/Left)”

Optional Setting



- 1 Set the right and left swing angle using “◀” button and “▶” button.

→ 1 ↔ 2 ↔ 3 ↔ 4 ↔ 5 ↔ SWING ←

Note

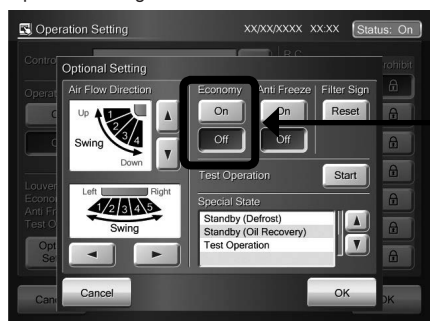
When the function does not exist at the objective unit, setting cannot be selected.

Note

5 swing angles (1 to 5) can be selected at “Right/Left Swing” operation section.

2-1-10 Setting “Economy” operation

Optional Setting



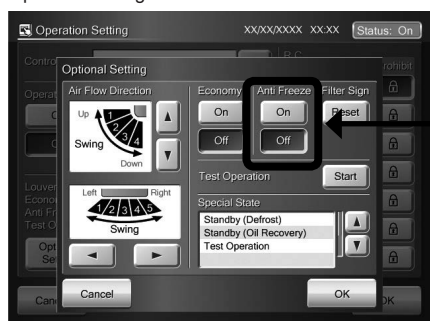
- 1 Click “On” button or “Off” button. “Economy” operation set/reset is performed.

Note

When the function does not exist at the objective unit, setting cannot be selected.

2-1-11 Setting “Anti Freeze” operation

Optional Setting



- 1 Click “On” button or “Off” button. “Anti Freeze” operation set/reset is performed.

Note

When the function does not exist at the objective unit, setting cannot be selected.

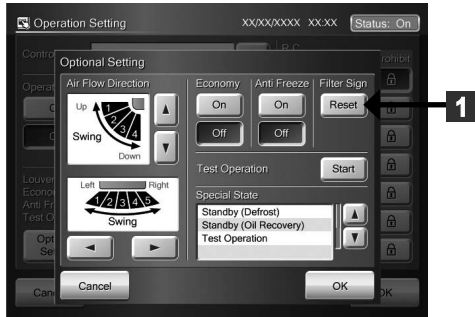
Note

Anti Freeze is a function that performs low temperature heating operation to prevent freezing of water lines and equipment, when air conditioning operation is off, in regions where outside temperature may drop below freezing.

If water lines are far from the unit or within exterior walls, this function may not provide enough anti freeze protection.

2-1-12 Resetting “Filter Sign”

Optional Setting



- 1 Click “Reset” button

Note

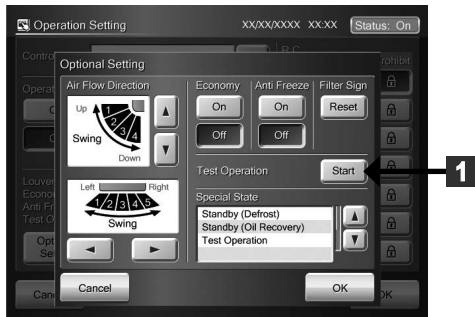
When the function does not exist at the objective unit, setting cannot be selected.

Note

“Filter Sign” indicates the air clean filter cleaning interval set at the indoor unit.
Reset the sign when the filter was cleaned.

2-1-13 Test operation

Optional Setting



- 1 Click “Start” button.

Note

Test operation of the indoor unit selected at “Operation Setting” screen starts.

Notes

There are the following 2 methods of resetting test operation.

- ① Automatic reset when 60 minutes has elapsed.
- ② Reset when operation stop was performed.

2-1-14 Checking “Special State” of R.C.Groups / Groups

Optional Setting



- 1 The current special state of the system is displayed at “Special State” display section of “Optional Setting” screen.

Notes

The followings are displayed at “Special State” display section.

“Special State” display items	Contents
Stand by (Defrost)	Defrost operation
Stand by (Oil Recovery)	Oil recovery operation
Under Maintenance	System is in the maintenance mode and the equipment cannot be operated.
Master indoor unit	Indoor unit has the cooling and heating selection right.
Master controlled (indoor unit)	Indoor unit is controlled by an indoor unit with the cooling and heating selection right.
Outer controlled (indoor unit)	Indoor unit is controlled by an outdoor unit with the cooling and heating selection right.
Test Operation	Test operation
Mode Mismatch	Different mode
Automatic Addressing	Operates the automatic address function.

2-1-15 Ending setting of “Optional Setting” screen

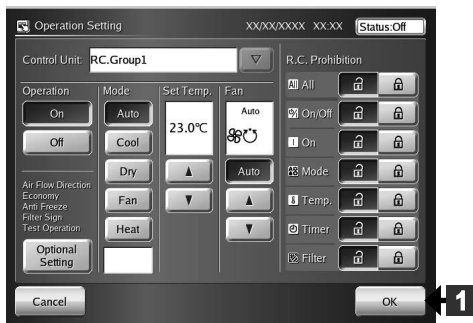
Optional Setting



- 1 If “Optional Setting” has ended, click “OK” button.
 - The set operation is performed.
 - ◆ “Optional Setting” screen closes.

2-1-16 Ending “Operation Setting”

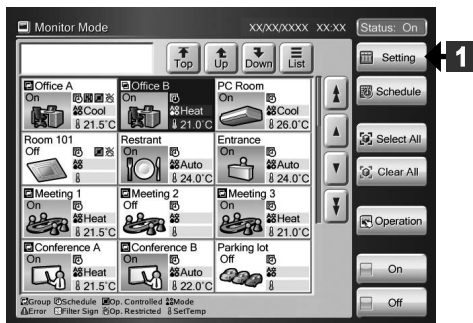
Operation Setting



- 1 If “Operation Setting” has ended, click “OK” button.
 - The set operation is performed.
 - ◆ “Monitor Mode” screen opens.

2-1-17 Displaying “User Setting/ History” screen

Monitor Mode (Icon)



- Switch “Monitor Mode” screen to “User Setting/History” screen.
- 1 Click “Setting” button.

Note

When a password is not set at the access right to “User Setting/History”, operation goes directly to “User Setting/History” screen.

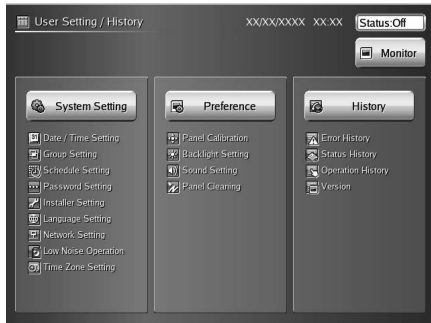
User setting/ History password Verification



- ◆ “User setting/ History password Verification” keyboard screen opens.

2 Key in “User setting/ History password” to be registered.

User Setting/History



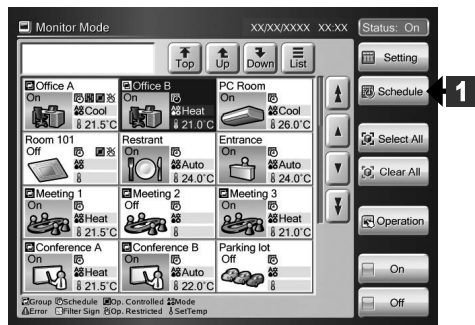
- ◆ “User Setting/History” screen opens.

Note

There are 3 menu buttons “System Setting”, “Preference”, and “History” in “User Setting/History” screen.

2-1-18 Displaying “Schedule Setting” screen

Monitor Mode (Icon)



- Switch “Monitor Mode” screen to “Schedule Setting” screen.

1 Click “Schedule” button.

Note

When a password is not set at the access right to “Schedule Setting”, operation goes directly to “Schedule Setting” screen.

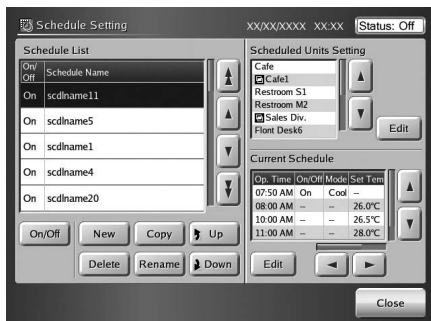
User Setting/ History Password Verification



- ◆ “User setting/ History password Verification” keyboard screen opens.

2 Key in “User setting/ History password” to be registered.

Schedule Setting



- ◆ “Schedule Setting” screen opens.

Note

Use operation by yearly calendar, “Custom Day” operation and a variety of other schedule operations by using “Schedule Setting”.

Chapter 3 SETTING

- The display format of date and time differs depending on the "Date Format" and "Time Format" in the "Date and Time Setting".

3-1 Language setting

3-1-1 Start system initialization

Installer Setting (Language Setting)



- **Display language setting when indoor unit not registered.**

- Turn on the touch panel controller power.

- ◆ "Language Setting" screen of "Installer Setting" opens.

- 1 Click the language button to be selected.

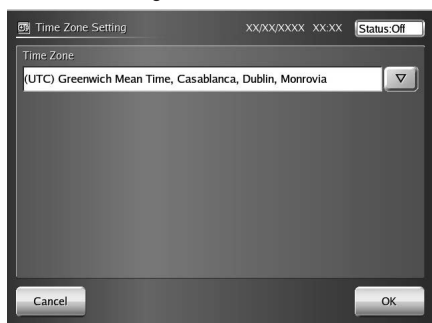
- 2 Click "OK" button.

- ◆ "Time Zone Setting" screen opens.

Notes

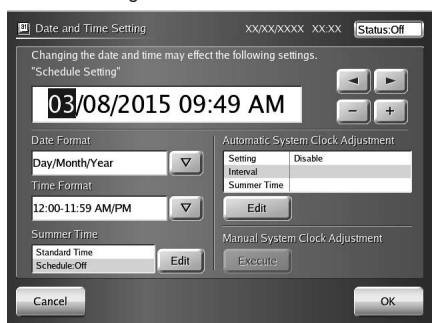
- When shifted to the "Time Zone Setting" screen, switched to the screen of the selected display language.

Time Zone Setting



- See "3-9 Time zone setting" for a detailed description of "Time Zone Setting".

Installer Setting



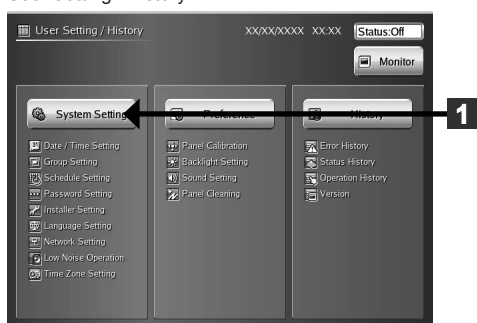
- See "3-2 Date Setting" for a detailed description of "Date and Time Setting".

Notice

Perform initialization in the state in which all installation work is complete and the system can be started. Perform installation work in accordance with the installation manual of the equipment to be installed.

3-1-2 After system initialization

User Setting / History

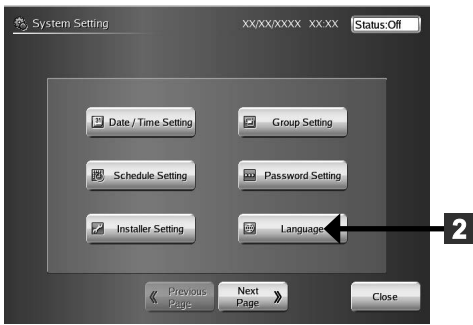


- **Display language setting when indoor unit registered.**

- 1 Click "System Setting" button.

- ◆ "System Setting" screen opens.

System Setting



2 Click “Language” button.

◆ “Language Setting” screen opens.

Language Setting



3 Click the language button to be selected.

4 Click “OK” button.

◆ “System Setting” screen opens.

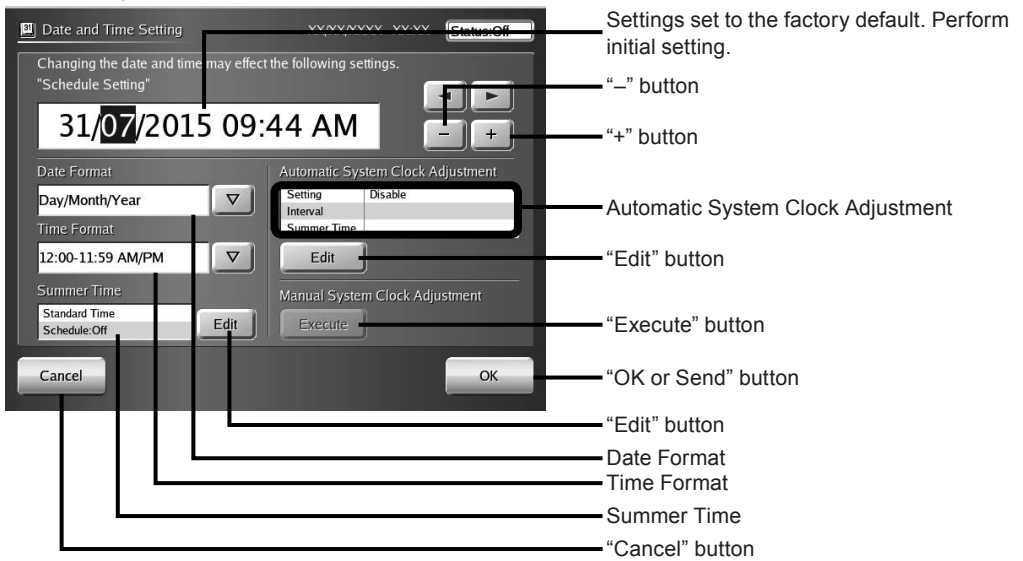
Note

When shifted to the “System Setting” screen, switched to the screen of the selected display language.

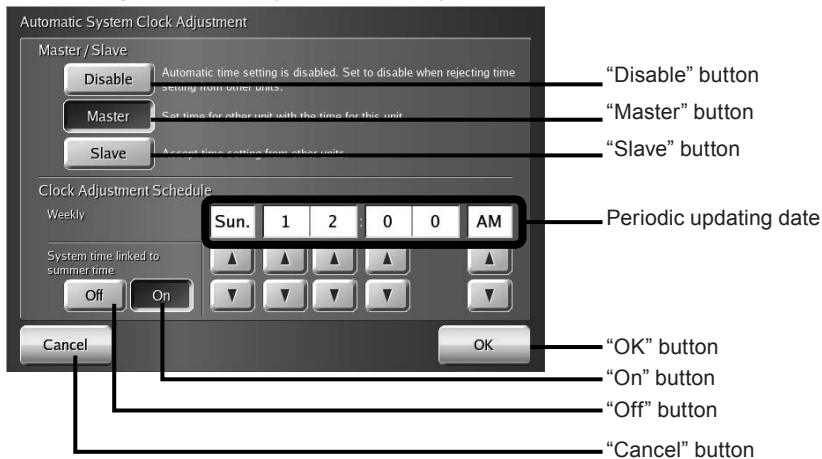
3-2 Date setting

3-2-1 Main screens of date setting

Date and Time Setting

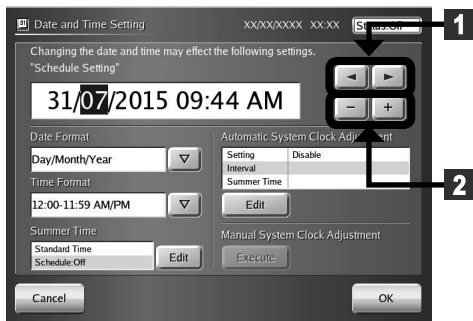


Date and Time Setting (Automatic System Clock Adjustment)



3-2-2 Setting the current date and time

Date and Time Setting



- 1 Select "item to be set" using "◀" and "▶" buttons.
- 2 To increment the set value, click "+" button.
To decrement the set value, click "-" button.

Note

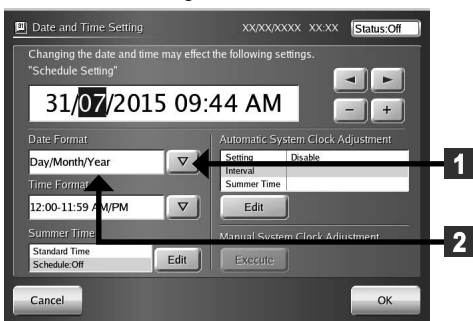
The calendar covers the period up to the year 2037.

Note

When the time was set, the time count stops. Always check the set time.

3-2-3 Selecting the date display format

Date and Time Setting



- 1 Click "▼" button on "Date Format".
◆ A display format list opens.

- 2 Click the display format to be selected.

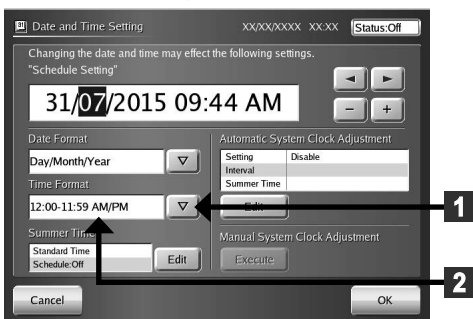
- ◆ Verify the selected display format at the screen.

Note

"Day/Month/Year", or "Month/Day/Year", "Year/Month/Day" can be selected.

3-2-4 Selecting the time display format

Date and Time Setting



- 1 Click "▼" button on "Time Format".
◆ A display format list opens.

- 2 Click the display format to be selected.

- ◆ Verify the selected display format at the screen.

Note

"12:00 - 11:59 AM/PM", "00:00-11:59 AM/PM", or "0:00-23:59" can be selected.

3-2-5 Setting the summer time

■ When setting the summer time manually

Date and Time Setting

1 Click "Edit" button on "Summer Time".

1 Click "Edit" button on "Summer Time".

◆ "Summer Time Setting" screen opens.

2 Click "▽" button on "Summer time".
When item list opens, select the "Summer time".

Note

See the table shown below for the items which can be selected.

Item	Display contents
Summer time	Displays the time put forward by "Time Range" hours from the current time.
Standard time	Displays the current time.

Summer Time Setting

1 Click "Summer Time".
2 Click "▽" button on "Summer time".
3 Click "▽" button on "Time Range". Then, click the adjusting time you want to select.
4 When the setting is complete, click "OK" button.

3 Click "▽" button on "Time Range". Then, click the adjusting time you want to select.

Note

One of the times can be selected from 4 items of "0.5hr", "1hr", "1.5hr", or "2hr".

4 When the setting is complete, click "OK" button.

■ When setting the summer time automatically

Date and Time Setting

1 Click "Edit" button on "Summer Time".

1 Click "Edit" button on "Summer Time".

◆ "Summer Time Setting" screen opens.

Summer Time Setting

1 Click "Summer Time".
2 Click "▽" button on "Summer time".
3 Click "▽" button on "Time Range". Then, click the adjusting time you want to select.
4 Click "Edit" button on the Date setting display in the "Schedule".

2 Click "▽" button on "Schedule".
When item list opens, select the "On".

3 Click "▽" button on "Time Range". Then, click the adjusting time you want to select.

Note

One of the times can be selected from 4 items of "0.5hr", "1hr", "1.5hr", or "2hr".

4 Click "Edit" button on the Date setting display in the "Schedule".

Summer Time Setting (Schedule)

Summer Time Setting

◆ "Schedule" screen opens.

5 Set "Month", "Day of week", and "Time" in "Start" using "▲" button or "▼" button.

6 Set "Month", "Day of week", and "Time" in "End" using "▲" button or "▼" button.

7 When the setting is complete, click "OK" button.

◆ "Schedule" screen closes.

◆ "Standard Time" and "Summer Time " are switched automatically according to the set schedule.

8 When the setting is complete, click "OK" button.

3-2-6 Setting Automatic System Clock Adjustment.

Date and Time Setting

Date and Time Setting (Automatic System Clock Adjustment)

● Setting which adjusts the time display of the equipment inside the system

1 Click "Edit" button on "Automatic System Clock Adjustment".

◆ "Automatic System Clock Adjustment" screen opens.

2 Click the appropriate button from among "Disable", "Master" and "Slave" buttons.

Notes

Disable: Automatic clock adjustment function is not performed.

Unaffected by the master clock setting.

Master: Master unit automatic clock adjustment setting
Sets the clock of other units to match the master unit clock.

Slave: Corrected to match the master unit clock by automatic clock adjustment.

"Master" is setting of 1 unit in the system.

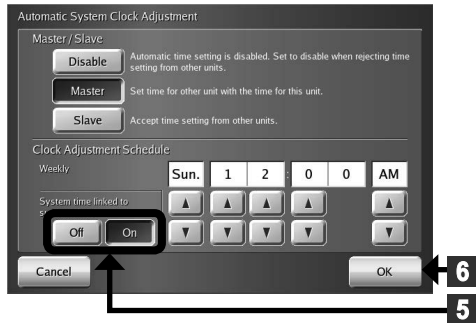
**"Master" is a unit in the system and becomes setting of 1 unit.

3 "Date of Week" and "Time" set by the automatic system clock adjustment are displayed.

◆ When Master was set, perform the setting shown below.

4 Set "Date of Week" and "Time" which perform the automatic system clock adjustment using the "▲" and "▼" buttons.

Date and Time Setting (Automatic System Clock Adjustment)



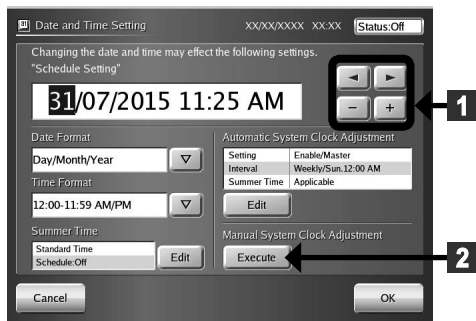
- 5** When linking to "Summer time schedule", click "On" button on "System time linked to summer time"
 - 6** At the end of setting, click "OK" button.
- ◆ "Automatic System Clock Adjustment" screen closes.

Notice

- Time setting precaution: When the clock is adjusted automatically, specify a time late at night, etc. when operation is not performed and the timer is not operating.

3-2-7 Adjusting the system clock manually

Date and Time Setting



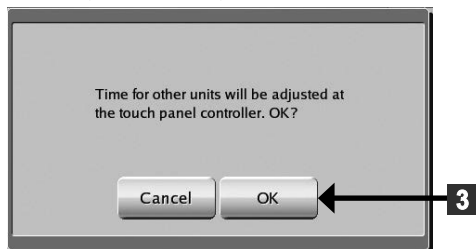
- When you want to execute time setting immediately at that point

- 1** Move to the setting area using the arrow buttons and change the time using "+" and "-" buttons.
- 2** After changing the time, click "Execute" button.

Notice

This function is effective only when "Master" of "Master/Slave" setting of "Automatic System Clock Adjustment" screen is set.

Manual System Clock Adjustment



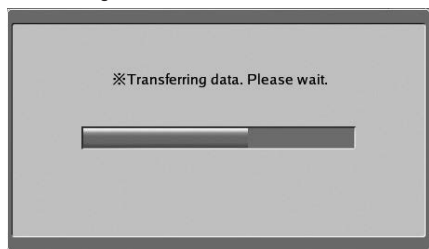
- ◆ "Manual System Clock Adjustment" confirmation screen opens.

- 3** Click "OK" button.

- ◆ "Transferring Data" screen opens.

- ◆ At the end of transmission, "Transferring Data" screen closes.

Transferring Data Screen



Notes

When the time is changed while set to "Master" at the "Automatic System Clock Adjustment" screen, the "OK" button of the "Date and Time Setting" screen changes to the "Send" button.

When the "Send" button is clicked, the time is entered and the "Manual System Clock Adjustment" screen opens.

3-3 Group setting

For the description of this chapter, refer to the OPERATING MANUAL in the CD-ROM.

3-4 Schedule Setting

For the description of this chapter, refer to the OPERATING MANUAL in the CD-ROM.

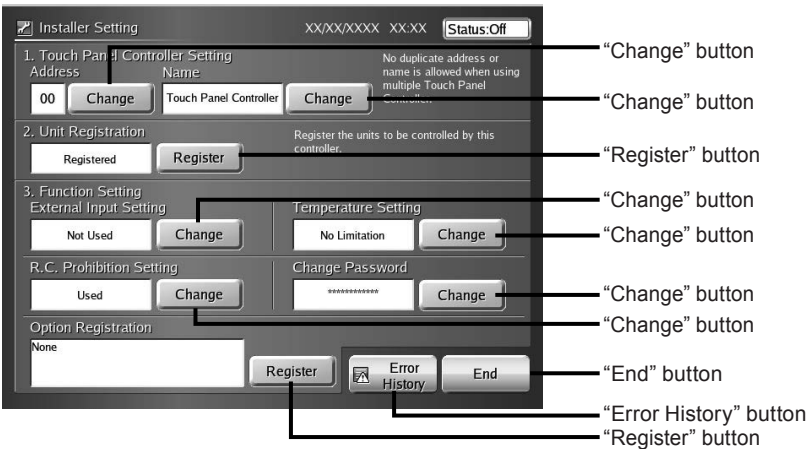
3-5 Password Setting

For the description of this chapter, refer to the OPERATING MANUAL in the CD-ROM.

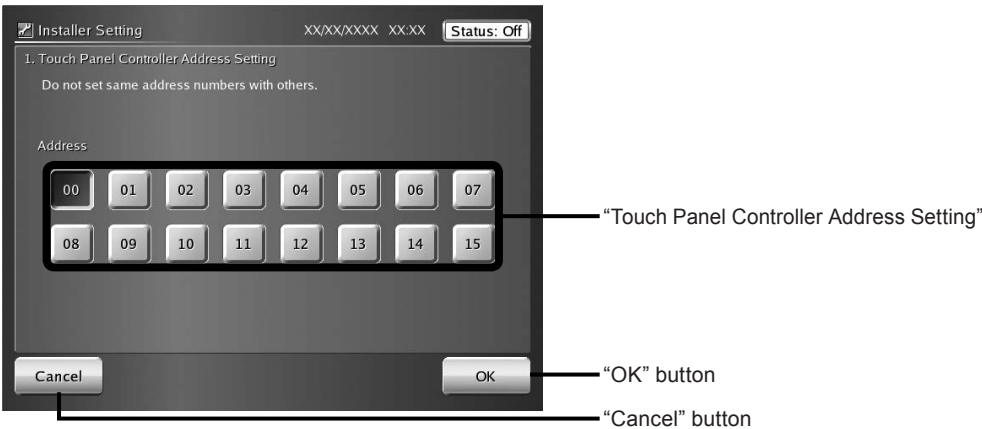
3-6 Installer setting

3-6-1 Main screens of Installer Setting

Installer Setting



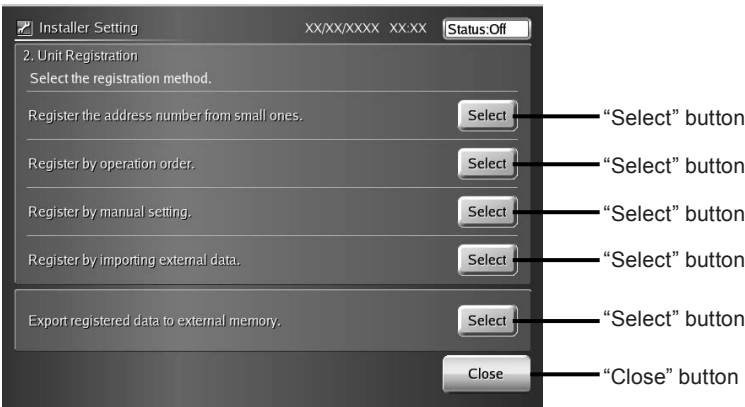
Installer Setting (Touch Panel Controller Address Setting)



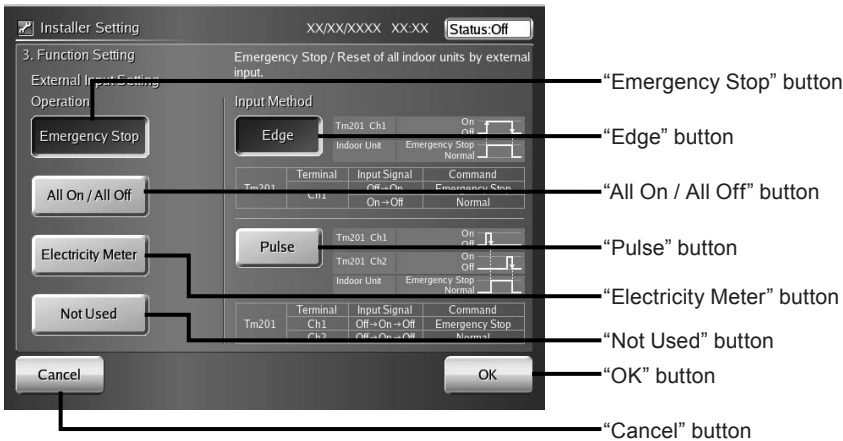
Installer Setting (Touch Panel Controller Name)



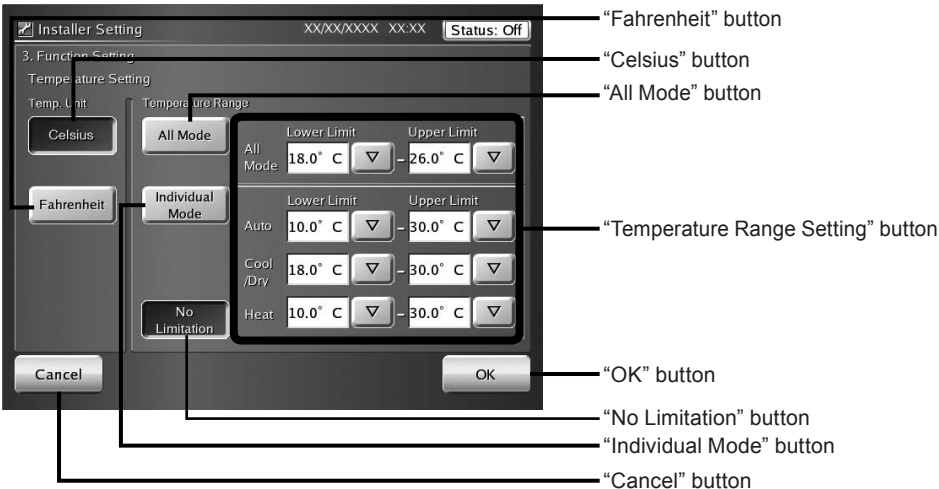
Installer Setting (Unit Registration)



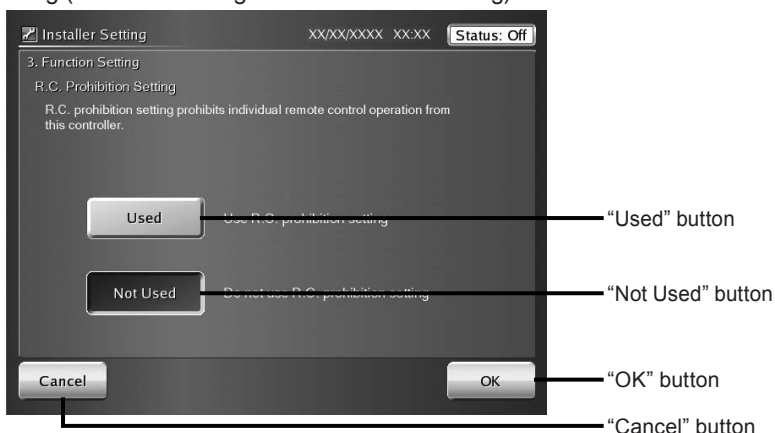
Installer Setting (Function Setting/External Input Setting)



Installer Setting (Function Setting/Temperature Setting)



Installer Setting (Function Setting/R.C. Prohibition Setting)



3-6-2 Installer setting

Installer Setting Password Verification



- A password is set to prevent inadvertent operation.

- 1 Enter the password at "Installer Setting Password".

Note

"VRFVRF" is set as the default password.

- 2 Click "OK" button.

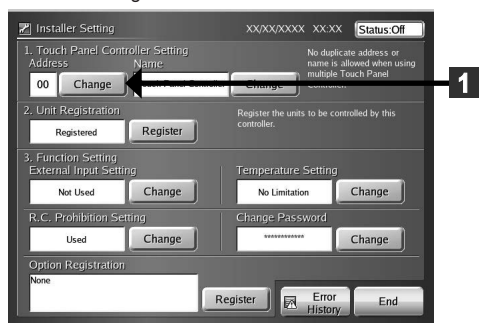
- ◆ "Installer Setting" screen opens.

Note

If the password is changed, see par. "3-6-19".

3-6-3 Setting the address of the touch panel controller main unit

Installer Setting



- 1 Click "Change" button on "Touch panel controller address setting".

- ◆ "Touch Panel Controller Address Setting" screen opens.

Notice

When 2 or more controllers* are installed in the system, set the address numbers so that the controller addresses (numbers) are not duplicated.

*Touch Panel Controller, Network Convertor(Group Remote Controller).

Installer Setting (Touch Panel Controller Address Setting)



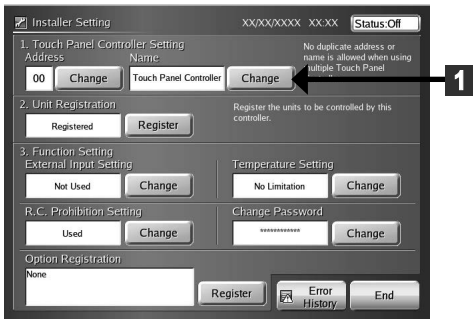
- 2 Select "Address" from 00 to 15 on the screen and click the button.

- 3 At the end of setting, click "OK" button.

- ◆ "Installer Setting" screen opens.

3-6-4 Setting the name of the touch panel controller main unit

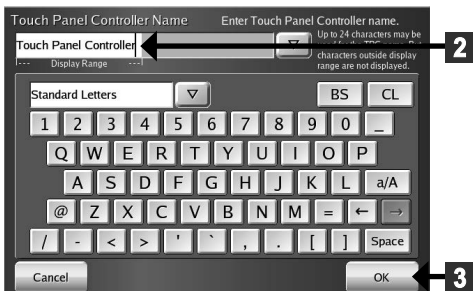
Installer Setting



- 1 Click "Change" button on "Name" in the "Touch panel controller setting".

◆ "Touch Panel Controller Name" screen opens.

Installer Setting (Touch Panel Controller Name)



- 2 Enter the "Name" in the "Touch Panel Controller Name".

Note

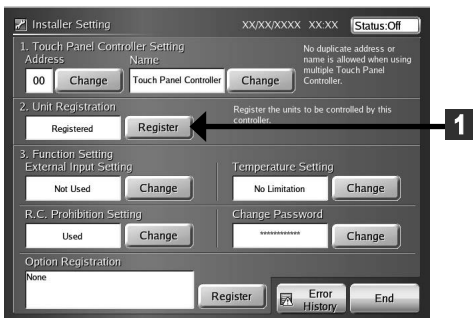
When this controller is operated by remote connection using PC, the set "Name" is displayed at the tab of browser displayed in the PC screen.

- 3 At the end of setting, click "OK" button.

◆ "Installer Setting" screen opens.

3-6-5 Registering the units

Installer Setting



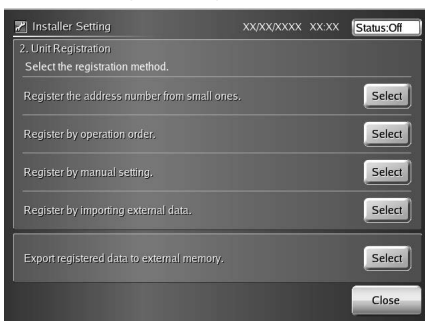
• Unit registration:

◆ Perform indoor unit registration after 5 minutes or more have elapsed after the indoor unit and outdoor unit power was turned on.

- 1 Click "Register" button of "Unit Registration".

◆ "Unit Registration" screen opens.

Installer Setting (Unit Registration)



Notice

Indoor unit registration and deletion may affect the group setting and schedule setting. Always confirm after the end of setting when group setting and schedule setting have already been performed.

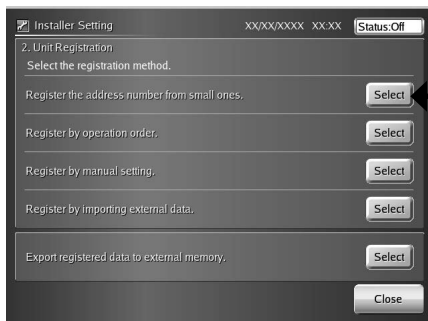
Notes

See the table below for the items which can be selected.

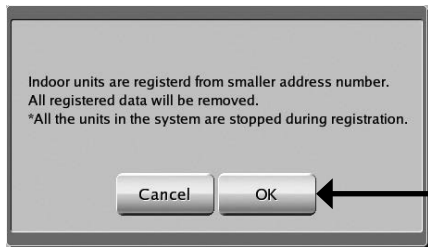
Items	Contents
Register the address number from small ones. 3-6-6	Units are automatically registered in ascending order of refrigerant system address.
Register by operation order. 3-6-7	Units are registered in the order in which the indoor units were operated.
Register by manual setting. 3-6-8, 3-6-9, 3-6-10	The units with the specified address are registered. Or deleted.
Register by importing external data. 3-6-11	The indoor units registration data is imported from an external memory.
Export registered data to external memory. 3-6-12	The indoor units registration data is exported to an external memory.
Registering the Electricity Meter. 3-6-13	Electricity meter is registered.

3-6-6 Registering indoor units in refrigerant system address order

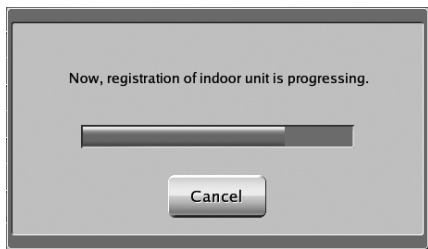
Installer Setting (Unit Registration)



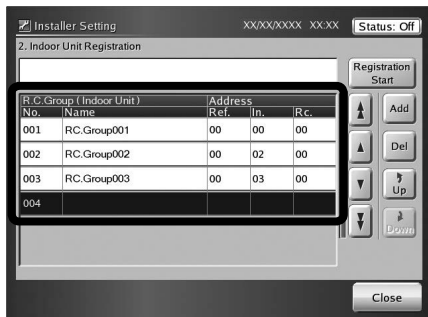
Address Order Registration Confirmation Screen



Registration of indoor unit is progressing



Installer Setting (Indoor Unit Registration)



- Indoor units are registered in ascending address order.

1 Click "Select" button.

- ◆ "Address Order Registration Confirmation" screen opens.

Notice

Note that when address order registration is performed the current registered indoor units, group setting, schedule setting data (unit setting) and history (abnormality and operation of the outdoor units and indoor units) are deleted.

2 Click "OK" button.

- ◆ "Registration of indoor unit is progressing" screen opens.

- ◆ When registration is successful; "Indoor Unit Registration List" screen opens.

Notice

When there is an abnormality in the system, an error screen is displayed and registration is stopped.

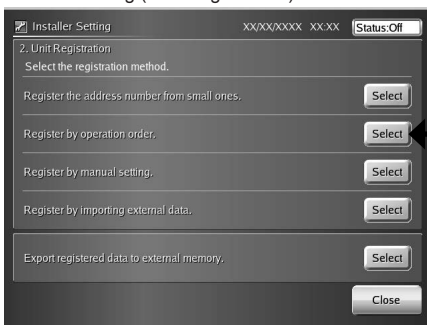
Notes

System abnormality

Abnormality contents	Cause
No outdoor unit	No outdoor unit of the same refrigerant system address as indoor unit.
No indoor unit	Not even 1 indoor unit at the same refrigerant system address as outdoor unit.
There is an abnormality in communications.	Cannot communicate. There is not even 1 unit.
There is an abnormality in unit setting.	There is an abnormality in unit data setting.
There is an abnormality in RCG address.	There is an abnormality in RCG address setting.
No master unit at outdoor units.	There is no master unit at the outdoor units.
Initializing	Cannot be executed because initializing at other unit.
Specified indoor unit does not exist.	There is no specified indoor unit data.
No electricity meter found.	There is no specified number of electricity meter.
Failed acquiring data. Perform registration again.	Information is not acquired properly.

3-6-7 Registering indoor units in operation order

Installer Setting (Unit Registration)



1 Click "Select" button.

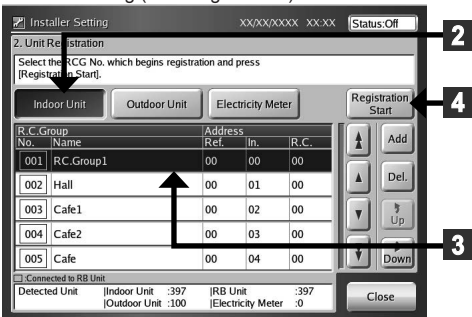
◆ "Unit Registration" list screen opens.

2 Click "Indoor Unit" button.

3 Select the list of the remote controller group No. from which registration is to begin.

When starting new registration, select No. 001.

Installer Setting (Unit Registration)



Notes

When changing the indoor unit registration configuration already registered, select the indoor unit you want to change.

The selected indoor unit and indoor units registered after it are deleted.

4 Click "Registration Start" button.

◆ "Register by operation order" screen opens.

5 Click "OK" button.

◆ "Performing system check" screen opens.

● At the orderly end of system confirmation, open "Indoor Unit Registration" list screen (operation wait state).

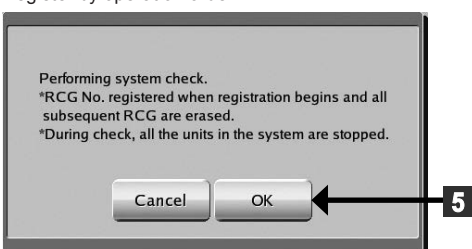
Notice

When there is an abnormality in the system, an error screen is displayed and registration is stopped. See the items of 3-6-6.

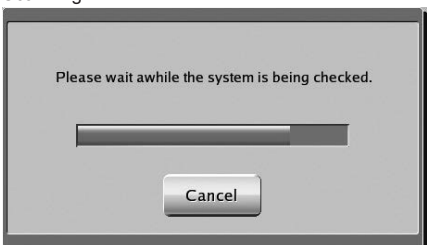
● **Operation of the indoor unit begins (On) in the order you want to register.**

◆ "Indoor Unit Registration" List screen opens

Register by operation order



Scanning



Installer Setting (Indoor Unit Registration)

Installer Setting (Indoor Unit Registration)

2. Indoor Unit Registration

Run the RCG to be registered. Waiting for RCG No.005 registration.

R.C.Group (Indoor Unit)	Name	Address	Ref.	In.	Rc.
001	RC.Group001	00	00	00	
002	RC.Group002	00	01	00	
003	RC.Group003	00	02	00	
004	RC.Group004	00	03	00	
005					

Registration End

Close

- ◆ The remote controller groups in the order in which they were started are displayed on “Indoor Unit Registration List” screen.

6 At the end of “Register by operation order”, click “Registration End” button.

7 Click “OK” button to close the slave window.

8 Click “Close” button to determine the set contents.

- ◆ “Installer Setting” screen opens.

Note

Registration is possible even when shifted from an operation other than operation registration.

Confirmation Screen

Operation order registration will be ended.
OK?

Cancel OK

Installer Setting (Indoor Unit Registration)

Installer Setting (Indoor Unit Registration)

2. Indoor Unit Registration

R.C.Group (Indoor Unit)	Name	Address	Ref.	In.	Rc.
001	RC.Group001	00	00	00	
002	RC.Group002	00	02	00	
003	RC.Group003	00	03	00	
004					

Registration Start

Add

Del

Up

Down

Close

3-6-8 Changing the registered indoor units sequence

Installer Setting (Indoor Unit Registration) Addition/Deletion

Installer Setting (Indoor Unit Registration) Addition/Deletion

2. Indoor Unit Registration

R.C.Group (Indoor Unit)	Name	Address	Ref.	In.	Rc.
001	RC.Group001	00	00	00	
002	RC.Group002	00	02	00	
003	RC.Group003	00	03	00	
004					

Registration Start

Add

Del

Up

Down

Close

1 When you want to change the indoor unit sequence, click the relevant indoor unit.

- ◆ Display of the selected names becomes blue.

2 Scroll using “Up” and “Down” buttons.

3 At the end, click “Close” button.

- ◆ “Installer Setting” screen opens.

Notice

When setting a remote controller group, only the master indoor unit can be selected. Slave units always shift as a set with the master unit.

3-6-9 Adding indoor unit registration

Installer Setting (Unit Registration)

- 1 Click "Select" button of "Register by manual setting".
 - ◆ "Indoor Unit Registration (Add/Delete)" screen opens.
- 2 Select the list of remote controller group No. at which addition of registration is to be started.

Note

The "Installer Setting (Indoor Unit Registration) Addition/Deletion" screen is the same as the "Installer Setting (Indoor Unit Registration)" screen which is opened when the "Select" button was clicked at step 1 of 3-6-7.

Installer Setting (Indoor Unit Registration) Addition/Deletion

- 3 Click "Add" button.
 - ◆ "Add Indoor Unit" screen opens.
- 4 Set Number of "Ref. Address" and "In. Address" of the R.C.Group you want to add using "▲" and "▼" buttons.

Notice

When there is a slave (Rc. Address 01 or higher) in an R.C. Group, register only the master unit (Rc. Address 00). When the master unit is registered the slave indoor unit is automatically registered.

Installer Setting (Add Indoor Unit)

- 5 Click "Add" button.
 - ◆ The registered indoor units are displayed at "Registration List".
- 6 When an indoor unit on "Registration List" is selected and "Delete" button is clicked, the selected indoor unit is deleted.
- 7 At the end, click "OK" button.

- ◆ When "Indoor Unit Registering" screen opens and registration ends normally, "Indoor Unit Registration (Add/Delete)" screen opens.

Notice

When there is an abnormality in the system, an error screen is displayed and registration is stopped. See the items of 3-6-6.

3-6-10 Deleting registered indoor units

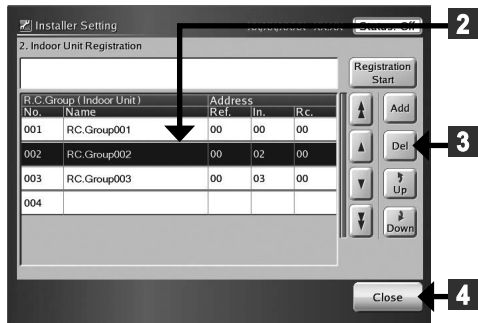
Installer Setting (Unit Registration)

- 1 Click "Select" button of "Register by manual setting".
 - ◆ "Indoor Unit Registration (Add/Delete)" screen opens.

- 2 Click the remote controller group name you want to delete.

- ◆ The selected remote controller group name is selected and the display becomes blue.

Installer Setting (Indoor Unit Registration) Addition/Deletion



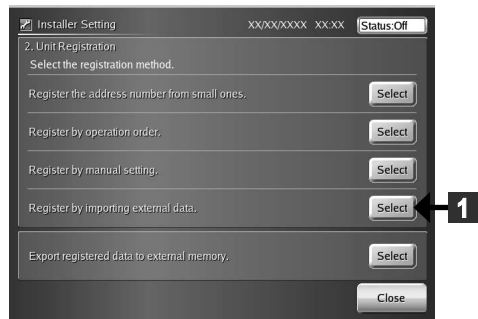
- 2** Click "Del" button.
- ◆ "Delete Confirmation" screen opens.
- 3** At the end, click "Close" button.
- ◆ The selected remote controller group is deleted.

Note

Deletion is possible even when shifted from an operation other than "Register by manual setting".

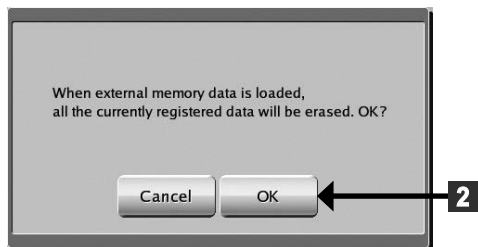
3-6-11 Registering indoor units by external input data

Installer Setting (Unit Registration)



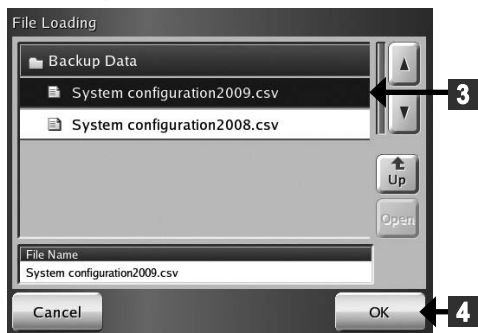
- Connect the USB memory storing the indoor unit registration data to the terminal.
- 1** Click "Select" button of "Indoor unit registration by importing external memory data".
 - ◆ "Data Importing Confirmation" screen opens.

Data Importing Confirmation



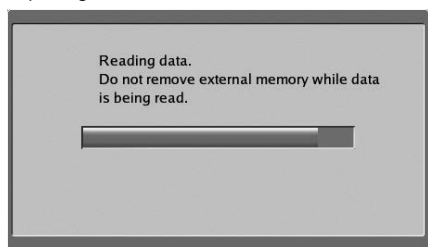
- 2** Click "OK" button.
- ◆ "File Loading" screen opens.

File Loading



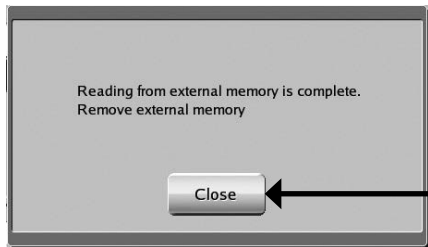
- 3** Click the file name to be imported.
- ◆ The selected filename is selected and the display becomes blue.
- 4** Click "OK" button.
- ◆ "Importing Data" screen opens.

Importing Data



- ◆ "Importing from external memory is complete" screen opens.

Importing from external memory is complete.



5 Click "Close" button.

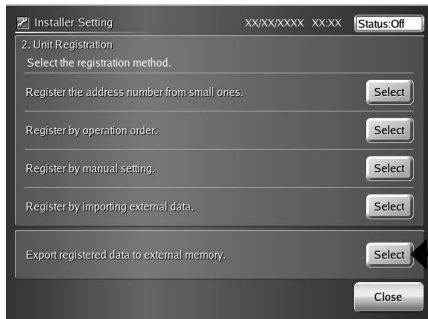
- Pull out the external memory from the USB terminal.

Note

When the "Close" button is clicked, whether or not the indoor unit which is importing data is in the system is automatically checked.

3-6-12 Exporting indoor unit registration data

Installer Setting (Unit Registration)

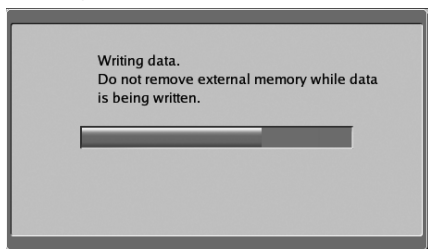


- Connect the USB memory to which the indoor unit registration data is to be stored to the terminal.

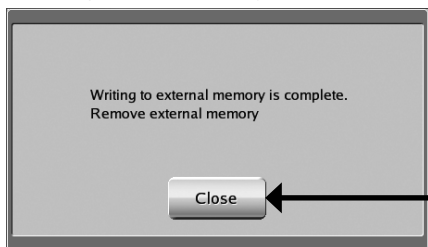
1 Click "Select" button of "Export registered data to external memory".

- ◆ The message "Exporting data" appears on the screen.
- ◆ At the end of exporting, the message screen disappears.
- ◆ "Exporting to external memory is complete." screen opens.

Exporting Data



"Exporting to external memory is complete."



2 Click "Close" button.

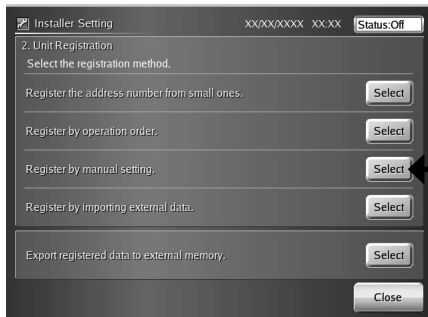
- Pull out the USB memory from the terminal.

Notice

The data is saved under the following name in the USB directory. In + date + time
Example: In0901011200
2009/01/01/12:00

3-6-13 Registering the Electricity Meter

Installer Setting (Unit Registration)



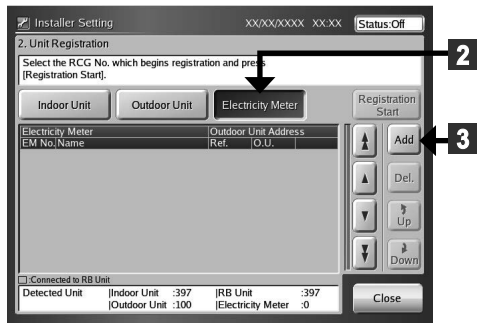
1 Click "Select" button on "Register by manual setting".

- ◆ "Unit Registration" screen opens.

Note

The "Installer Setting (Unit Registration)" screen is the same as the "Installer Setting (Unit Registration) Addition/Deletion" screen which is opened when the "Select" button was clicked at step [1] of 3-6-7.

Installer Setting (Unit Registration)



2 Click "Electricity Meter" button.

3 Click "Add" button.

◆ "Add Electricity Meter" screen opens.

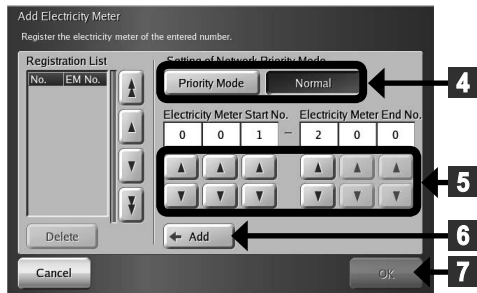
4 Click "Priority Mode" or "Normal" in the "Setting of Network Priority Mode".

Note

When scanning is performed in the "Priority Mode", operation of all the units in the system stops. (Recommended setting)

When you do not want to stop operation, perform scanning in the Normal mode.

Installer Setting (Add Electricity Meter)



5 Set "Electricity Meter Start No." and "Electricity Meter End No." using "▲" or "▼" button.

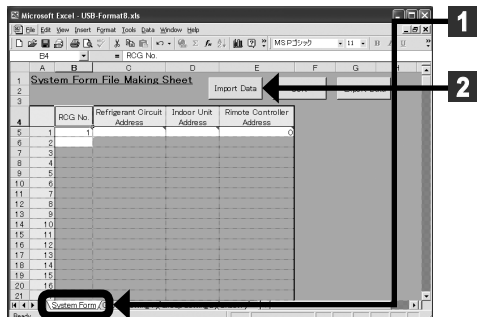
6 When the setting is complete, click "Add" button.

7 When the setting is confirmed, click "OK" button.

◆ "Add Electricity Meter" screen closes.

3-6-14 Editing the system configuration file of the touch panel controller by PC

- Create an indoor unit register file by PC and register it at the touch panel controller.
- Use the "File Making Sheet" by copying it from the CD-ROM supplied.
- When correcting the touch panel controller registration data; see par. 3-6-11.



- Open "System Form File Making Sheet" file.

1 Click "System Form" sheet tab.

- Connect the USB memory containing "Indoor unit registration data" to the PC.

2 Click "Import Data" button.

- Select the file to be imported at "System Form" sheet.

Note

Display of the screen at file selection is different depending on the operation software.

◆ Data is imported at "System Form" sheet.

Note

When generating new data from the PC, register it directly to the file making sheet.

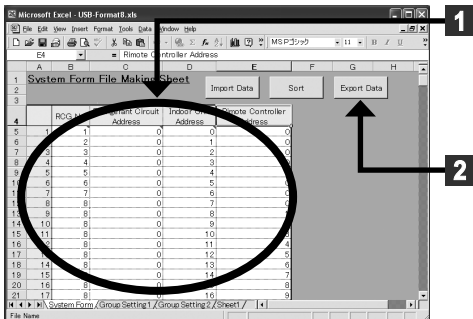
- A system composition file is newly created from the PC and is registered to the touch panel controller.

Notice

When editing at the file making sheet and importing the data to the touch panel controller, pay attention to the following points.

Since the registered indoor unit data is overwritten and the following data are changed when data is imported, always confirm the data after setting.

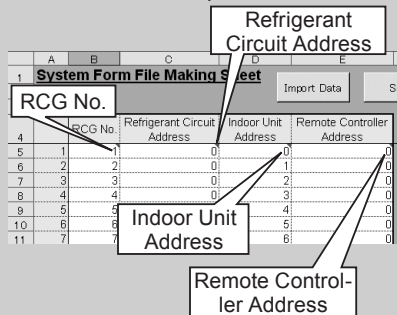
- Group setting data
- Schedule data (unit setting)
- History (outdoor unit and indoor unit errors and operation)



- 1 Edit the contents of "RCG No.", "Refrigerant Circuit Address", "Indoor Unit Address", and "Remote Controller Address".

Notes

Address number input



Note: Only half-size characters can be input.

Note

When the address sequence must be changed, "Sort" button on "System Form" sheet can be used.

Notes

Contents which can be set

RCG No. (Remote Controller Group No.)	Select and enter the remote controller group by consecutive No. from 1. However, make the same remote controller group the same number. (However, RCG No.:1 cannot be changed.)
Refrigerant Circuit Address	Enter the refrigerant system address (0-99).
Unit Address	Enter the indoor unit address (0-63).
Remote Controller Address	Enter the remote controller address (0-15). Input sequentially beginning from 0.

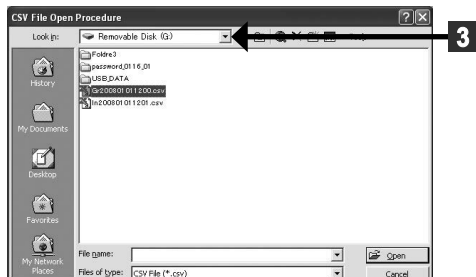
- At the end of all editing, save the file.

- 2 Click "Export Data" button.

Notes

When "Sort" / "Export Data" button was clicked and there is an error in the entered address, it is automatically checked and an error is generated. If there are no errors, the file is output.

Error message	Problem point
Entered data error. RCG No. is a value other than blank or 1-400. Enter correct data.	·RCG No. is blank or a value other than 1-400.
Entered data error. Refrigerant Circuit Address is a value other than blank or 0-99. Enter correct data.	·Refrigerant Circuit Address is blank or a value other than 0-99.
Entered data error. Indoor Unit Address is a value other than blank or 0-63. Enter correct data.	·Indoor Unit Address is blank or a value other than 0-63.
Entered data error. Remote Controller Address is a value other than blank or 0-15. Enter correct data.	·Remote Controller Address is blank or a value other than 0-15.
Entered data error. RCG No. is not sequential. Enter correct data.	·RCG No. is not consecutive.
Entered data error. Remote Controller Address of master unit is not 0. Enter correct data.	·Master Remote Controller Address is not 0.
Entered data error. Remote Controller Address of slave units is not sequential. Enter correct data	·Slave Remote Controller Address is not consecutive.
Entered data error. Remote Controller Address of slave units is incorrect. Enter correct data.	·Slave Refrigerant Circuit Address is incorrect.
Entered data error. Address is duplicated. Enter correct data.	·Address is duplicated.



- ◆ A save destination window opens.

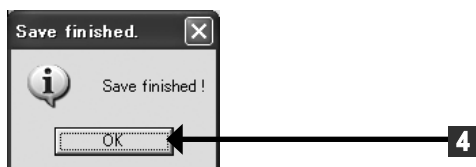
3 Select USB memory.

- After the end of importing of the file, “Save finished” screen is opened and a message is confirmed.

4 Click “OK” button.

- ◆ Close a screen.

- Disconnect the USB memory from the terminal.

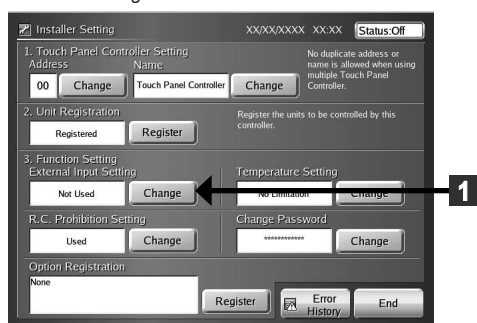


Note

To import by touch panel controller, always output and save the file by “Export Data”.

3-6-15 Setting the external input signal

Installer Setting



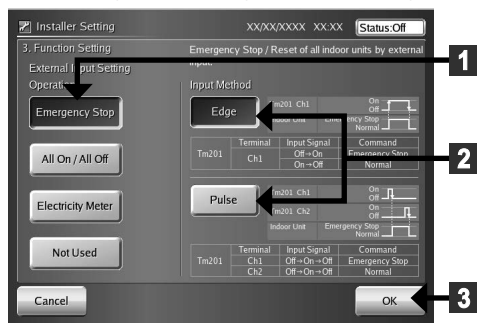
- Set the external input signal.

1 Click “Change” button on “External Input Setting”.

- ◆ “External Input Setting” screen opens.

Setting which emergency-stops the system by external input signal

Installer Setting (Function Setting/External Input Setting)



1 Click “Emergency Stop” button.

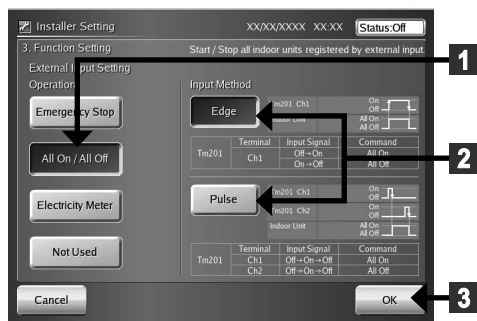
2 Click “Edge” or “Pulse” button, depending on the type of signal to be input.

3 Click “OK” button.

- ◆ The set contents are entered and “Installer Setting” screen is opened.

Setting which turns the system “All On/All Off” by external input signal

Installer Setting (Function Setting/External Input Setting)



1 Click “All On/All Off” button.

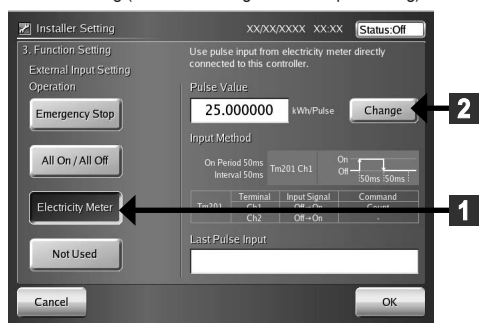
2 Click “Edge” or “Pulse” button, depending on the type of signal to be input.

3 Click “OK” button.

- ◆ The set contents are entered and “Installer Setting” screen is opened.

■ Setting the electricity meter by external input signal

Installer Setting (Function Setting/External Input Setting)



- Set the signal conditions sent from electricity meter to this unit.

- 1 Click "Electricity Meter" button.
 - 2 Click "Change" button.
- ◆ "Pulse Value" screen opens.

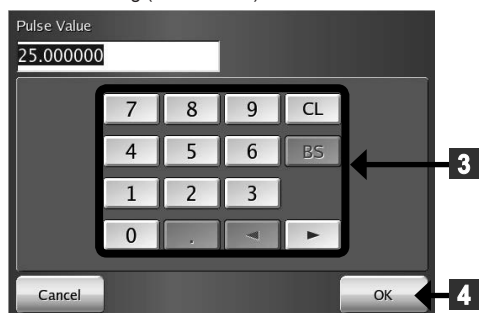
- 3 Enter the values in the "Pulse Value" using numeric buttons.

Note

- "Pulse Value" : electricity consumption (kWh) per 1 pulse sent from electricity meter
- Input range : 0.000001 to 100

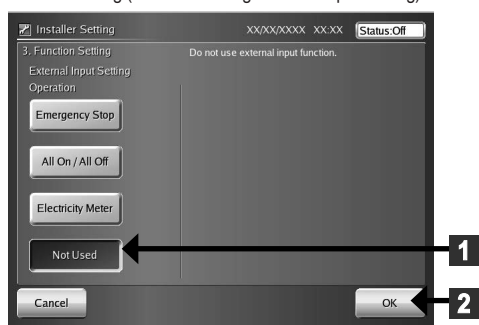
- 4 At the end of setting, click "OK" button.
- ◆ "Installer Setting" screen opens.

Installer Setting (Pulse Value)



■ Disabling operation setting by external input signal

Installer Setting (Function Setting/External Input Setting)

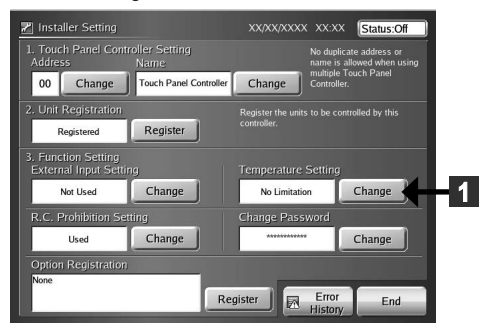


- 1 Click "Not Used" button.
- 2 Click "OK" button.

- ◆ The set contents are entered and "Installer Setting" screen is opened.

3-6-16 Setting the temperature display unit

Installer Setting

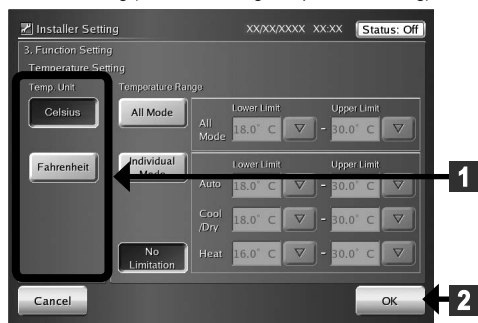


- This function limits the width over which the temperature can be set from touch panel controller to indoor unit.

- 1 Click "Change" button of "Temperature Setting".
- ◆ "Temperature Setting" screen opens.

■ Setting the temperature display unit

Installer Setting (Function Setting/Temperature Setting)

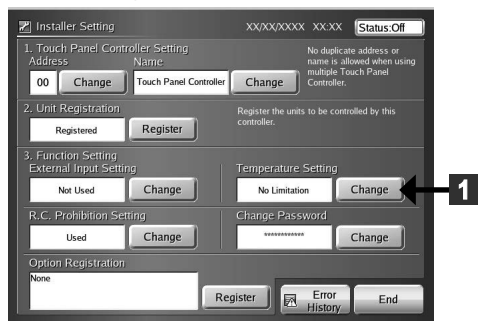


- Set the temperature unit used in the region where the system is to be installed.

- 1 Click “Celsius(°C)” or “Fahrenheit(°F)” button.
- 2 Click “OK” button.

3-6-17 Setting the settable temperature range

Installer Setting

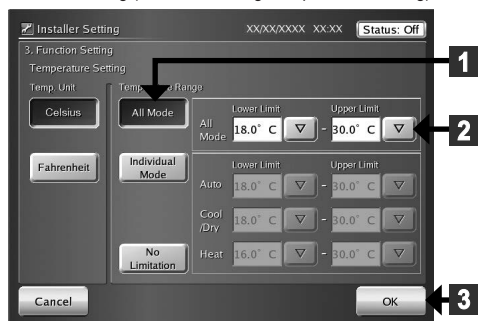


- This function limits the width over which the temperature can be set from touch panel controller to indoor unit.

- 1 Click “Change” button of “Temperature Setting”.
- ◆ “Temperature Setting” screen opens.

■ Setting the settable temperature range

Installer Setting (Function Setting/Temperature Setting)



- Makes the width the all operation modes same settable temperature range.

- 1 Click “All Mode” button of “Temperature Range”.
 - 2 Select the low limit temperature and high limit temperature by clicking “▽” button.
 - 3 Click “OK” button.
- ◆ The set contents are entered and “Installer Setting” screen is opened.

Notes

- See the table at the right for the temperature ranges which can be set. Set temperature high and low limit values (The temperature cannot be set above the high value or below the low value.)

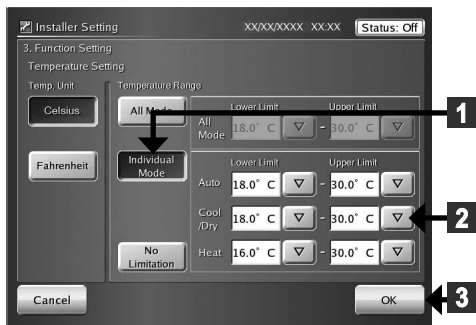
Temperature unit	Celsius	Fahrenheit
Set temperature (Auto, Cool, Dry)	18 - 30°C	64 - 88°F
Set temperature (Heat)	10 - 30°C	48 - 88°F

Notes

- Set the upper and lower limit temperatures settings performed in the touch panel controller.
- *The upper and lower limit temperatures settings from the Standard Remote Controllers are not restricted.
- See par. “3-3-3” for setting the upper and lower limit temperatures settings to the registered indoor unit.

■ Setting the settable temperature range for each operation mode

Installer Setting (Function Setting/Temperature Setting)



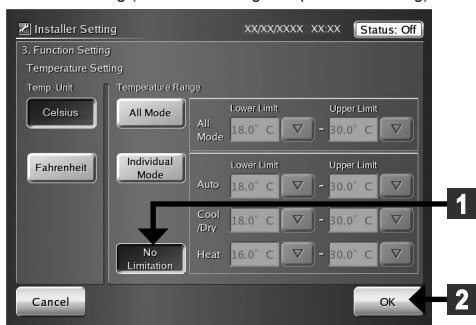
- Set the settable temperature range for each operation mode.
- Set the temperature of “Auto”, “Cool/Dry”, and “Heat” operation modes of “Individual Mode”.

- 1 Click “Individual Mode” button of “Temperature Range”.
- 2 Select “Lower Limit” and “Upper Limit” by clicking the “▽” button for each operation mode.
- 3 Click “OK” button.

◆ The set contents are determined and “Installer Setting” screen is opened.

■ Disabling settable temperature range setting

Installer Setting (Function Setting/Temperature Setting)



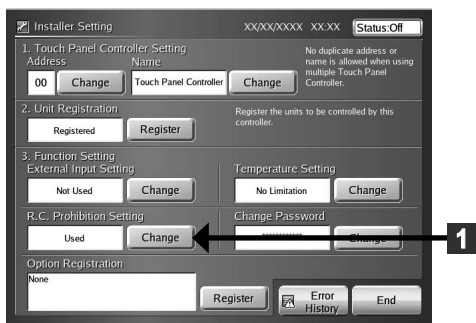
- Disabling settable temperature range setting.

- 1 Click “No Limitation” button.
- 2 Click “OK” button.

◆ The set contents are determined and “Installer Setting” screen is opened.

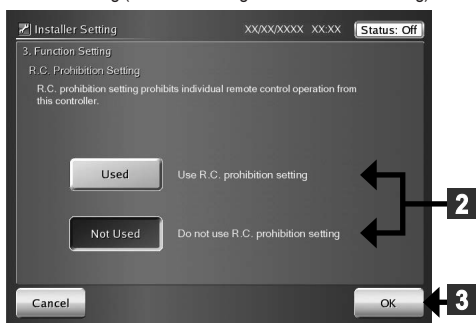
3-6-18 Setting the remote controller operation prohibition

Installer Setting



- 1 Click “Change” button of R.C. Prohibition Setting.
- ◆ “R.C. Prohibition Setting” screen opens.

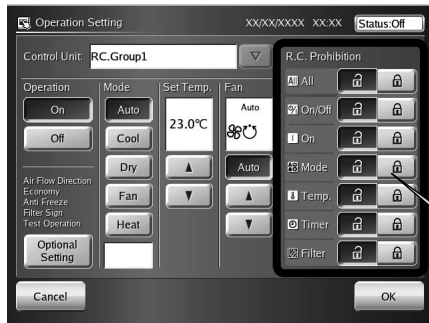
Installer Setting (Function Setting/R.C. Prohibition Setting)



- 2 To enable the R.C. Prohibition setting, click “Used” button or to disable the R.C. Prohibition setting, click “Not Used” button.
- 3 Click “OK” button.

◆ The set contents are determined and “Installer Setting” screen opens.

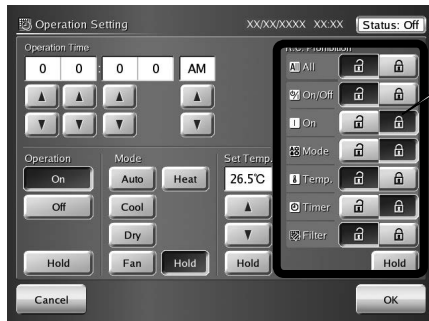
Operation Setting (Monitor Mode)



Note

When prohibit setting was set to disable ("Not Used"), the remote controller operation restricted button of "Operation Setting" screen is not displayed on the screen.

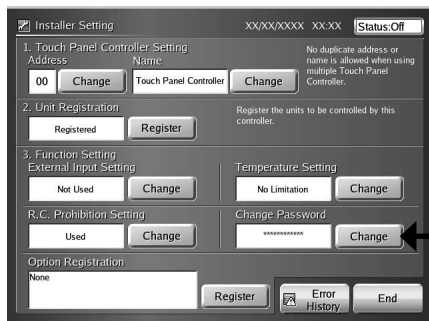
Operation Setting (Schedule)



When "Not Used" was set, the remote controller operation restricted button of "Operation Setting" screen is not displayed on the screen.

3-6-19 Changing the installer setting password

Installer Setting



1 Click "Change" button of "Change Password."

◆ "Keyboard (Change Installer Setting Password)" screen is opened.

2 Enter "New Password".

3 Click "OK" button.

◆ "Installer Setting Password Verification" screen is opened.

4 Enter the same password at step **2** again.

5 Click "OK" button.

◆ "Installer Setting" screen opens.

Notes

If you forget the password the subsequent installer setting will be impossible.
Make a note of the password so as not to forget the password.

Change Installer Setting Password

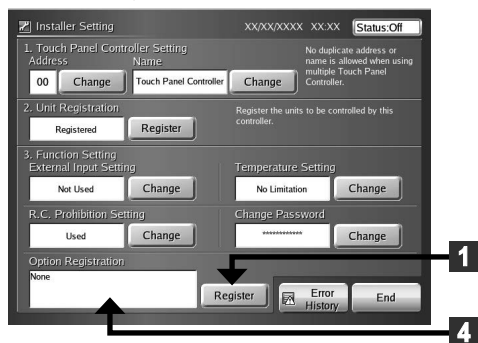


Installer Setting Password Verification



3-6-20 Setting the option registration

Installer Setting

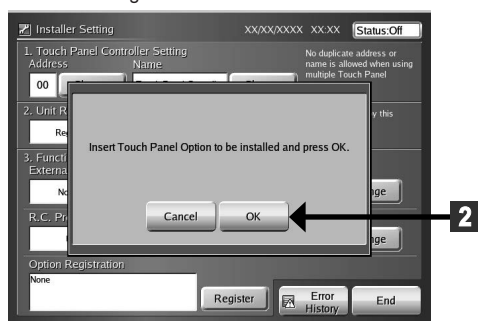


- 1 Click "Register" button on "Option Registration".

Note

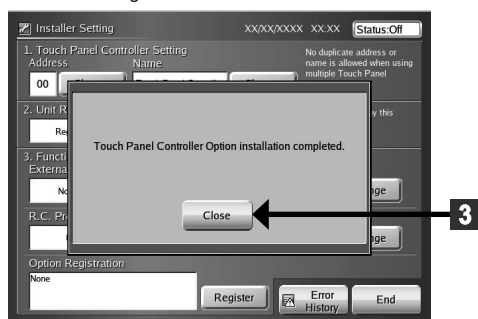
This item can be performed only by users which purchase the optional part.

Installer Setting



- 2 Insert an optional USB memory to this unit.
When sub-screen appears, click "OK" button.

Installer Setting

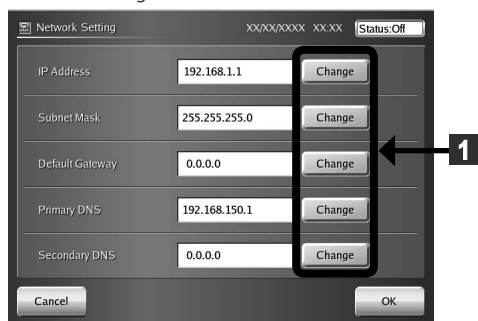


- 3 Click "Close" button.
- 4 When the registration is complete, an optional parts name is displayed in the "Optional parts". Then, check it.

3-7 Network setting

3-7-1 Main screens of network setting

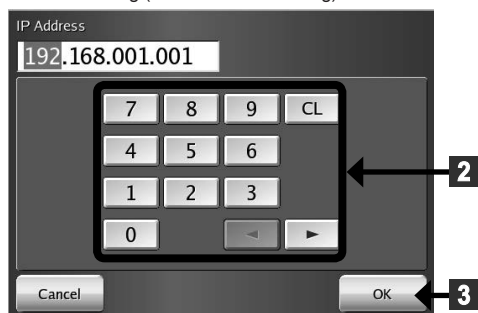
Network Setting



- When remote control function, function of E-mail notification for malfunction, or electricity charge apportionment option is used via LAN, the following settings are necessary. For the information required for setting, check with your network administrator.

- (1) "IP Address",
- (2) "Subnet Mask"
- (3) "Default Gateway"
- (4) "Primary DNS"
- (5) "Secondary DNS"

Address setting (for IP Address setting)

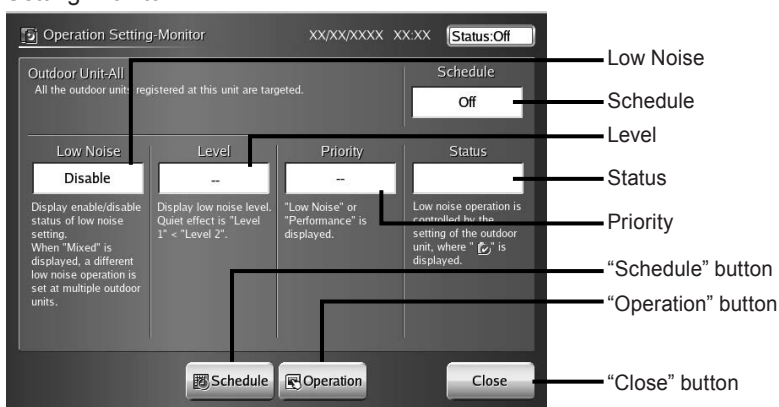


- 1 Click "Change" button in the item you want to set.
- 2 Enter the data of item using numeric buttons. In the same way, enter the data in the other items.
- 3 When the setting is complete, click "OK" button.

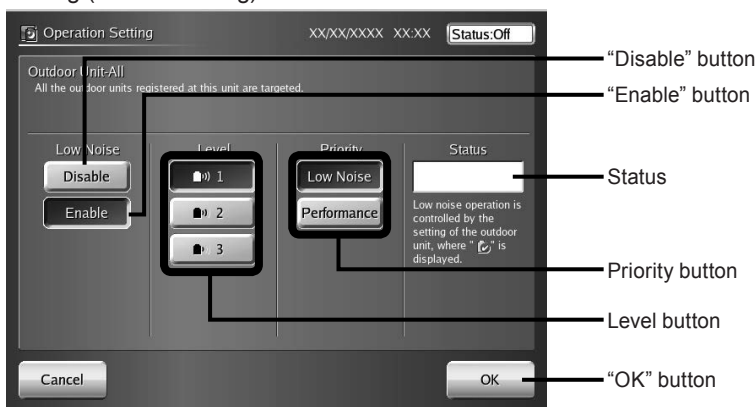
3-8 Low noise operation

3-8-1 Main screens of low noise operation

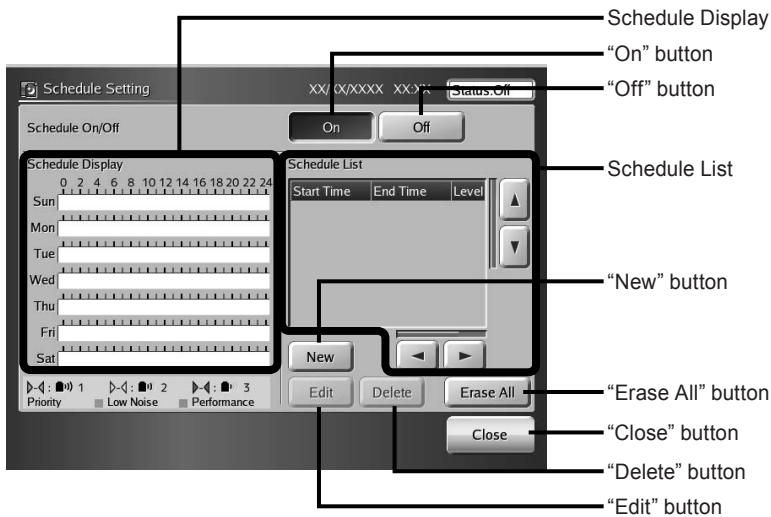
Operation Setting-Monitor



Operaiton Setting (manual setting)

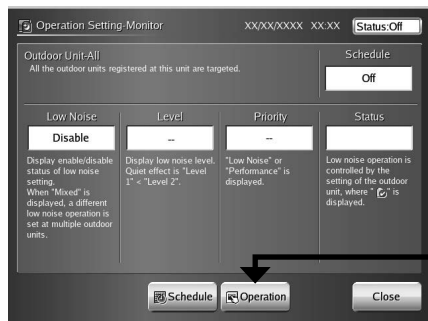


Operation Setting (schedule setting)



3-8-2 Setting operation for low noise setting

Operation Setting-Monitor (Outdoor Unit-All)

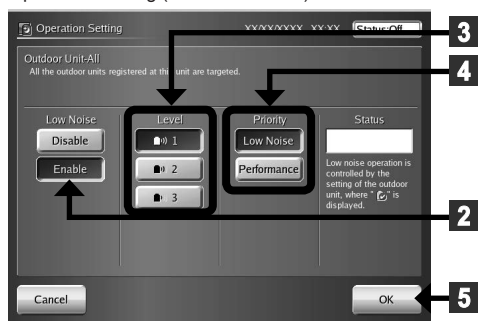


- Lower the operating sound of outdoor unit.
- "Low noise operation" is set to all the outdoor units registered by this controller.
- When "Low noise operation" function is set to "On", maximum performance of cooling or heating is restricted.

1 Click "Operation" button on "Operation Setting-Monitor".

◆ "Operation Setting" screen opens.

Operation Setting (Outdoor Unit-All)



2 Click "Enable" button on "Low Noise".

3 Click the button you want to set from "1", "2", or "3" button on "Level".

Notes

- Level 1 : The effect of decreasing the outdoor sound is small.
- Level 2 : The effect of decreasing the outdoor sound is normal.
- Level 3* : The effect of decreasing the outdoor sound is large.
(*Level 3 may not be displayed depending on the connected outdoor unit.)

4 Click the button you want to set from "Low Noise" or "Performance" button on "Priority".

Notes

- Low Noise : Gives the priority to the low noise operation.
- Performance : Gives the priority to the performance operation.

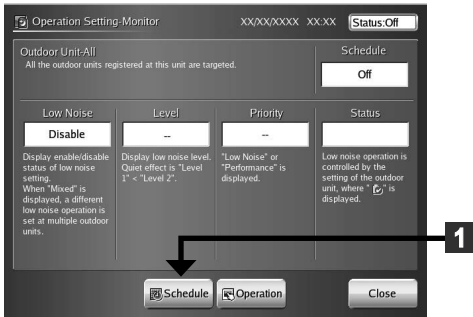
- 5 When the setting is complete, click "OK" button.

Notes

When outdoor units with 2 setting levels and outdoor units with 3 setting levels are mixed in one refrigerant system, the menu screen in which 3 setting levels can be set is displayed. In this case, even if the outdoor unit with 2 setting levels is set to Level 3, the actual setting will be Level 2.

3-8-3 Setting schedule of low noise setting

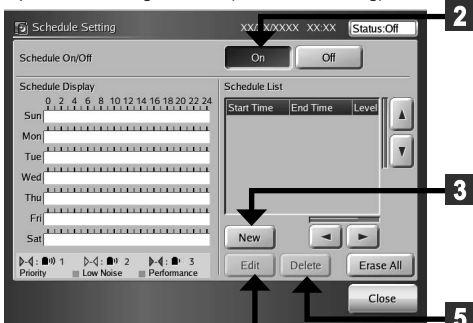
Operation Setting-Monitor (Outdoor Unit-All)



- 1 Click "Schedule" button on "Operation Setting-Monitor".

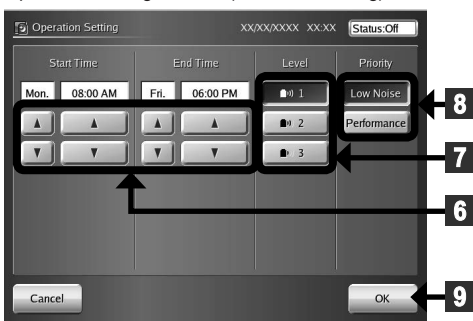
◆ "Schedule Setting" screen opens.

Operation Setting-Monitor (Schedule Setting)



- 2 Click "On" button in "Schedule On/Off".
- 3 When new schedule is set, click "New" button. Go to step 6.
- 4 When changing the already input schedule, click "Edit" button. Go to step 6.
- 5 When deleting the already input schedule, click "Delete" button.

Operation Setting-Monitor (Schedule Setting)



- 6 Set "Start Time" and "End Time" of low noise operation using "▲" and "▼" buttons. Then, set "Level" and "Priority".
- 7 Click the button you want to set from "1", "2", or "3" button on "Level".
- 8 Click the button you want to set from "Low Noise" or "Performance" button on "Priority".
- 9 When the setting is complete, click "OK" button.

Operation Setting-Monitor (Schedule Setting)



- 10 Check the set contents. If the setting is correct, click "Close" button.

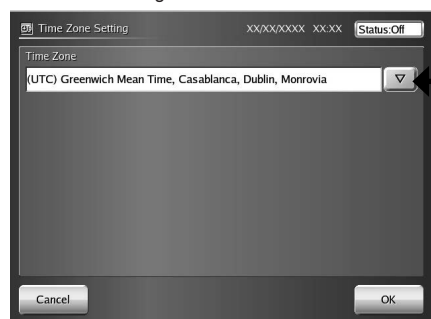
Note

When timer setting is complete, if "On/Off" setting item is set to "On", the operation starts according to the set schedule.

3-9 Time zone setting

3-9-1 Setting the time zone

Time Zone Setting



- Set the time zone of the area where this unit is used.

1 Click “▽” button on “Time Zone”.

- ◆ Time zone list opens.

Time Zone Setting



2 Display the “Time zone” of the area where this unit is used using Up button or Down button.

3 Click the “Time zone” of the area where this unit is used

4 Click “OK” button.

Chapter 4 PREFERENCE SETTING

4-1 Preference Setting

For the description of this chapter, refer to the OPERATING MANUAL in the CD-ROM.

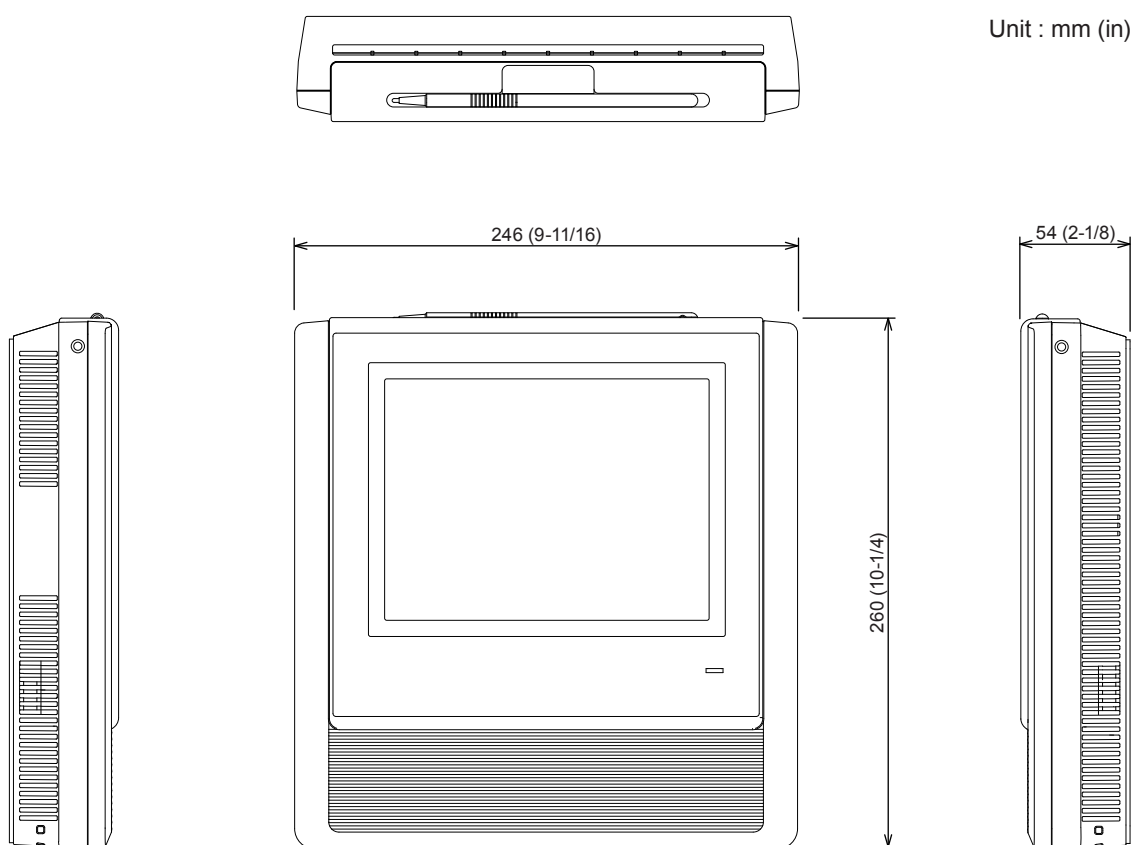
Chapter 5 HISTORY

5-1 History Display

For the description of this chapter, refer to the OPERATING MANUAL in the CD-ROM.

Chapter 6 OTHERS

6-1 Outline dimensions



6-2 Specifications

Model name	UTY-DTG*Z1
Power source voltage	1 ø AC100 - 240 V
Power source frequency	50 / 60 Hz
Power consumption	22W
Display	7.5-inch TFT color LCD display (640 x 480 pixels), with Touch panel
LED indicator	Power LED (Green)
External interface	USB 2.0
	Transmission
	Ethernet port (Ethernet port is required for remote connection using internet.)
	EXT IN: (Either emergency stop or batch operation/stop, Electricity meter) (Either no-voltage contacts or voltage contacts can be selected)
	EXT OUT: (Operation state, error state)
	Reset SW
Usage temperature range °C (°F)	0 to 40 (32 to 104)
Usage humidity range (%)	0 to 85 (no condensation)
Storage temperature range °C (°F)	-20 to 70 (-4 to 158)
Storage humidity range (%)	0 to 85 (no condensation)
Dimensions [H x W x D] mm (in)	260 x 246 x 54 (10-1/4 x 9-11/16 x 2-1/8)
Weight g (oz)	2150 (76)

* The liquid crystal panel is manufactured using high precision technology, but there may be 0.01% or less mixing pixels or continuously lighted pixels. This is not a trouble.

6-3 Error code

•For the details or the indoor unit or outdoor unit error when checking the error contents, refer to the error codes in each installation manual.

Error code	Contents
16.1	Transmission PCB connection error
16.3	LAN communication error
16.4	Peripheral device network communication error
17.1	Electricity charge apportionment error
C1.1	Main PCB error
C2.1	Transmission PCB error
C3.1	PCB 1 error
C8.1	Input device error
CF.1	External connector error (USB memory)

FUJITSU GENERAL LIMITED
3-3-17, Suenaga, Takatsu-ku, Kawasaki 213-8502, Japan