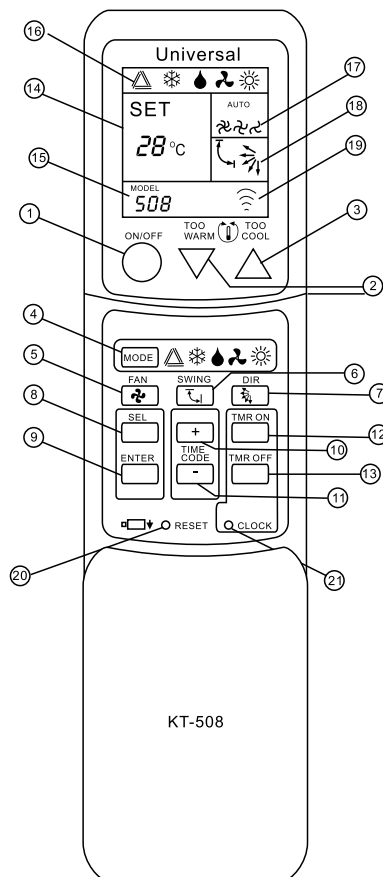


Panel Description

1. ON/OFF key: Press it once to turn on or off the air conditioner.
2. Temperature decrease: Press it once, temperature decreases 1°C.
3. Temperature increase: Press it once, temperature increases 1°C.
4. Mode switch: Press the key, work mode is changed as per the following sequence:
Auto→cold→dry→ventilation→heat
5. Air flow change: Press the key, air flow is changed as per the following sequence:
Auto→strong→middle→weak.
6. Auto air flow direction: press the key to change air flow direction between auto direction and manual direction.
7. Manual air flow direction: Press the key to change air flow direction.
8. Model code select:press it to select model code.
9. ENTER:press it to confirm selected model code.
10. Time/code"+":press it once, code or time will increase.
11. Time/code"-":press it once, code or time will decrease.
12. TMRon: timer inline.
13. TMRoff: timer offline.
14. TEMP: set temperature display.
15. Model&clock: Model and clock display.
16. Mode: Current work model display.
17. FAN: current air flow display.
18. current air flow direction display.
19. Transmission signal display: transmit signal once, it flashes.
20. when remote control is abnormal, put pen tip into the hole and press it. Then set Model code again.
21. Put pen tip into the hole and press it. Then set the clock



Timer on/off setting of Remote control

Timer on: you can set timer on, only after turning off your air conditioner.

1. Press the "TMR on" key, the LCD displays the clock signal and time flashes.
2. Press "TIME/code" "+" or "-" key, adjust the time when you want to make the air conditioner turn on automatically.
3. Time flashes and it will stop after 5 seconds. The LCD displays current time and clock signal. Now setting finishes.

Timer off: you could set timer off, only after turning on your air conditioner.

1. Press the "TMR off" key, the LCD displays the clock signal and time flashes.
2. Press TIME/CODE "+" or "-" key, adjust the time when you want to make the air conditioner turn off automatically.
3. Time flashes, and it will stop after 5 seconds. The LCD displays current time and clock signal. Now setting finishes.

NOTE

1. If press the TMR ON/OFF key while the time is flashing, timer is deleted.
2. After timer setting is finished, you should make the remote control's emit directs to your air conditioner's receiving location in available distance. If not, the setting is deleted.
3. If you want to see the timer, you should press the TMR on/off key, the LCD will display the time and after 5 seconds it will display current time.

Attention

1. Generally, the battery can be used for one or two years. If it is not used for a long time, remove the battery so as to avoid leakage liquid of the battery to damage the machine. When the LCD looks dim, please change batteries. (New and old batteries can not be used together) After the batteries are replaced every time, it is not necessary to set model code again.
2. If abnormal situation appears because of not correct use, please put pen tip or other item into "Reset" hole. Press it to restore normal status. This time it is necessary to set clock again and you need not set model code again.
3. As usual the LCD only display the time when pressing model code "Enter" key, you can find the code and it is showed on LCD. After 5 seconds it resumes time.
4. Check carefully that there is no remora between remote controller and air condition when the timer on/off doesn't work. Because the operate is effective only when the air conditioner receives the timer on/off signal from remote controller.
5. The manufacturer keeps the right to change the parameter and function of product.

Clock setting of Remote control

1. Put pen tip or other thin item into the "clock" hole and press it, the clock on LCD will flash.
2. Press "TIME/code" "+" or "-" key, tune to current time.
3. Press the hole again, the clock on LCD stops flashing, the setting is over. (The auto-setting is also over after the clock stop flashing in 5 seconds while you do not press the key.)

Technical Parameters

Controllable distance : Large than 8 meters

Power supply voltage: DC 3 V

Battery model: Battery AAA(UM-4、R03)×2

Dimension: L160mm×W58mm×D18mm

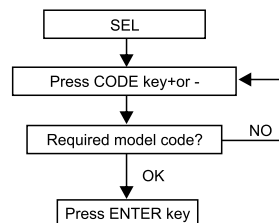
Weight: Approx.95g(excl.the batteries)

Product Description

Integrates 100 brands of 508 models in one remote controller. It is the latest product of our company. Big volume, low power, good quality and convenient to use. You can input model code directly, or search the model code automatically. Once selected, the code was stored in machine automatically for ever. Timer on and timer off, clock accurate. The perfect designment provides you with convenience. So it is your best choice. Please read this user's Guide carefully before using it, which will be a great help to use the remote control for you.

Model Setting of Remote Control

1. Pull side cover of remote control down. Put 2 AAA (VM-4,R03) batteries as per polar indicated on battery cabin.
2. Find the model code from Model code list. If there are many models, for one brand, you have to try the one which is most suitable for your machine. E. g. for SANYO, you should try model code from 046 to 095.
3. Press "SEL" key, model code on LCD will flash. Press TIME/CODE "+" or "-" key until required model code appears. Then, press "ENTER" key, the model code stops flashing. Aim at air-conditioner by pressing ON/OFF key, you can remote control your air conditioner.



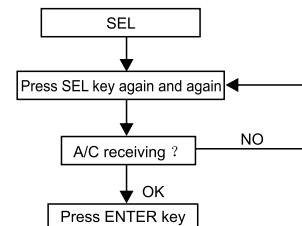
NOTE

1. If one brand has more than one group code, please choose the first group. if it doesn't work, then choose the second, one by one, till it works.
2. Press the TIME/CODE "+" or "-" key continuously, the code will increase or decrease fast.

Remote Control Auto Search

If you do not know model of air conditioner and remote control or you can not find required model from Model code list, please operate as per the following steps:

1. Press "SEL" key, model code on LCD will flash, let the remote control aim at air conditioner, press "SEL" key again and again. Press it once, model code adds 1 automatically and emit corresponding ON/OFF signal. Press and release until air conditioner receives signal and produces buzzer sound. Then press "ENTER" key.
2. After turning on the air conditioner, try other function keys. If they do not work, repeat above steps until it is correct.



Model Code Table

Brand	Model Code	Brand	Model Code
MITSUBISHI	001-040, 478-479	YINYAN	328-331, 258-269
SANYO	046-095	HISENSE	332-335
SHARP	098-106	HUABAO	336-344
TOSHIBA	107-117, 488-499	CHUNLIAN	345-350, 453
HITACHI	118-126, 500, 501	SHINCO	351-354, 454-455
FUJITSU	127-137	DONGBAO	355-361
Panasonic National	138-184	RAYBO	362-367
CORONA	185-183	HUIKANG	368, 441-443
Whirlpool	184-170, 602	LEHUA	369, 435-438
DAIKIN	171-183	HUIFENG	370
CHOFU	184-187	GALANZ	371-372
SAMSUNG	188-195, 603	JDC	373, 440
FUNAI	430, 481	KANGLI	374-375
LG	197-200, 504	SHENGFEI, SHUANGLU	376, 450
GOLDSTAR	201, 466-469	CONROWA	377
HYUNDAI	202, 438	PANDA	378
CARRIER	203-209, 482-486	CHIGO	379-382
PHILCO	210-211, 487-490	BOERKA	383, 434, 436-437
SALU DENKI	212-216	SHANGLING	384-385, 444-445
Electrolux	218-220	JINSONG	386-391, 445-448
DOCTOR	221, 449	SHANDING	392, 449
UNI-AIR	222-224, 450	WEILI	393-396
KLIMATEAIR	225-226, 452	KONKA	397, 457-459
TRANE	227-232	GLIE	398-399
LIANGYU	233, 451	XINLE	400-401
MACQUAY	234-237	HUAMEI	402, 480-485
YORK	238-243	YANGTZE	403
GUQIAO	244, 491	SHUANGLU	404-407
JOHNSON	245, 492	HUAKE	408
TADIRAN	246-251	SOVA	409-410
ALPIN	252-253	XILENG	411-412
SASUKI	254, 470	DONGXINBAO	413
LOREN-SEBO	255, 471, 472	JINDA	414
TECO	256, 473-475	TIANDI, MCOM	415
SUNDURG	257, 605	KOLIN	416-418
MIDEA	260-265	TATUNG	419-420
HAIER	266-272	PROTON	421-423
TCL	273-281	SAMPO	424-425
KELON	282-287	SUMMER	427
AUCMA	288-295	SONGGE	428-429
AUX	297-300	NORITZ	431
CHANGHONG	301-308	JIANGNAN A/C	432
GREE	309-316	Sabro	435, 505-508
HUALING	317-325		