

INSTALLATION & OPERATION MANUAL

BACnet Gateway for VRF System UTR-YLBA

Version 1.1



FUJITSU GENERAL LIMITED

CAUTION
Please read the LICENSE
AGREEMENT in the
manual first.

P/N 9708409016

LICENSE AGREEMENT FOR “BACnet GATEWAY FOR VRF SYSTEM”

IMPORTANT-READ CAREFULLY

This “BACnet GATEWAY for VRF SYSTEM” License Agreement (“LICENSE AGREEMENT”) is a legal agreement between you and Fujitsu General Limited (“FGL”) for the use of VRF BACnet GATEWAY products designated below, which includes computer software and printed materials, and may include online or electronic documentation (collectively “SOFTWARE PRODUCT” or “SOFTWARE”). By installing, copying, or otherwise using the SOFTWARE PRODUCT, you accept to be bound by all of the terms and conditions of this LICENSE AGREEMENT. If you do not agree to any of the terms and conditions of this LICENSE AGREEMENT, you may not use the SOFTWARE PRODUCT and shall promptly return the SOFTWARE PRODUCT to the place where you have obtained it.

1. COPYRIGHT AND OWNERSHIP.

The SOFTWARE PRODUCT is protected by copyright laws and international copyright treaties as well as other intellectual property laws and treaties. The SOFTWARE PRODUCT is licensed to you, not sold. FGL owns the title, copyright, and other intellectual property rights in the SOFTWARE PRODUCT.

2. GRANT OF LICENSE.

FGL hereby grants you the limited, non-exclusive and non-transferable rights to use the SOFTWARE PRODUCT only for the purpose of controlling the VRF air-conditioning system products (VRF) provided you comply with all terms and conditions of this LICENSE AGREEMENT. You may copy the SOFTWARE PRODUCT solely for backup or archival purposes.

3. DESCRIPTION OF OTHER RIGHTS AND LIMITATIONS.

(1) LIMITATIONS ON REVERSE ENGINEERING, DECOMPILATION, AND DISASSEMBLY.

You may not modify, alter, reverse engineer, decompile, or disassemble the SOFTWARE PRODUCT. You shall not alter or remove any copyright, trademark or other proprietary notice of FGL from the SOFTWARE PRODUCT.

(2) RENTAL.

You may not rent or lease the SOFTWARE PRODUCT.

(3) SOFTWARE TRANSFER.

You may not transfer the SOFTWARE PRODUCT to any person and/or entity (-ies) either payable or free of charge.

(4) TERMINATION.

Without prejudice to any other rights, FGL may terminate this LICENSE AGREEMENT if you fail to comply with the terms and conditions of this LICENSE AGREEMENT. In such an event, you shall promptly return all originals and copies of the SOFTWARE PRODUCT to FGL.

4. USE OF SOFTWARE PRODUCT.

You may install and use the enclosed SOFTWARE PRODUCT on a single terminal connected to a single computer under one of the operating environment identified in the documentation accompanying the SOFTWARE. You may not network the SOFTWARE or otherwise use it on more than one computer terminal at the same time. The infrastructure necessary to use the SOFTWARE PRODUCT (PC, accessories, etc.), shall be prepared separately by you.

5. NO WARRANTY.

FGL EXPRESSLY DISCLAIMS ANY WARRANTY FOR THE SOFTWARE PRODUCT AND ANY RELATED DOCUMENTATION. THE SOFTWARE PRODUCT AND ANY RELATED DOCUMENTATION ARE PROVIDED “AS IS” WITHOUT WARRANTY OF ANY KIND, EITHER EXPRESSED OR IMPLIED, INCLUDING, WITHOUT LIMITATION, STATUTORY WARRANTIES, THE IMPLIED WARRANTIES MERCHANTABILITY OF FITNESS FOR A PARTICULAR PURPOSE OR NON-INFRINGEMENT OF THIRD PARTY’S RIGHTS. THE ENTIRE RISK ARISING OUT OF USE OR PERFORMANCE OF THE SOFTWARE PRODUCT REMAINS WITH YOU. HOWEVER, IF WITHIN (90) DAYS FOLLOWING YOUR PURCHASE OF THE SOFTWARE, YOU NOTIFY FGL OF PHYSICAL DEFECT OF THE MEDIA CONTAINING SOFTWARE, FGL WILL REPLACE THE DEFECTIVE MEDIA WITH NEW MEDIA.

6. LIMITATION OF LIABILITY.

IN NO EVENT SHALL FGL BE LIABLE FOR ANY DAMAGES WHATSOEVER (INCLUDING, WITHOUT LIMITATION, DAMAGES FOR LOSS OF BUSINESS PROFIT, BUSINESS INTERRUPTION OR LOSS OF BUSINESS INFORMATION, DAMAGES ARISING OUT OF DATA OR INFORMATION DERIVED FROM OR BASED ON THE ELECTRICITY CHARGE APPORTIONMENT FUNCTION IN THE SOFTWARE OR ANY OTHER PECUNIARY LOSS) DIRECT OR INDIRECT, TO YOU OR TO ANY THIRD PARTY, ARISING OUT OF THE USE OR INABILITY TO USE THE SOFTWARE , EVEN IF FGL HAS BEEN ADVISED OF THE POSSIBILITY OF SUCH DAMAGES.

7. ENTIRE AGREEMENT.

This LICENSE AGREEMENT (including any addendum or amendment to this LICENSE AGREEMENT included with the SOFTWARE PRODUCT) is the entire agreement between you and FGL relating to the SOFTWARE PRODUCT and supersedes all prior contemporaneous oral or written communications, proposals and representations with respect to the SOFTWARE PRODUCT or any other subject covered by this LICENSE AGREEMENT.

8. INDEMNITY.

You agree to indemnify and hold FGL, and its subsidiaries, affiliates, officers, agents, co-branders or other partners, and employees, harmless from any damage, claim or demand, including without limitation reasonable attorneys' fees, made by any third party due to or arising out of use of the SOFTWARE.

9. GOVERNING LAW AND JURISDICTION.

This LICENSE AGREEMENT is governed by the laws of JAPAN. You and FGL hereby irrevocably submit to the exclusive jurisdiction of the Tokyo District Court and other higher courts having jurisdiction in Japan for the settlement of disputes arising under or in connection with this LICENSE AGREEMENT.

Contents

1. SAFETY PRECAUTIONS	4
2. SYSTEM OUTLINE	5
3. SPECIFICATION TABLE	6
4. INSTALLATION	7
4-1. USB Adaptor Connections.....	7
4-2. XLON USB Device Driver Installation.....	8
4-3. BACnet Gateway Application Installation.....	15
5. INITIAL SETTING	24
6. OPERATION.....	28
6-1. Startup and Shutdown (Close) of the BACnet Gateway	28
6-2. Main Screen	29
6-3. Setting Indoor Unit.....	35
6-4. Fire Alarm Setting (Applicable only at Option Setting).....	37
6-5. Description Setting	38
6-6. Stop of Network Response	39
7. TROUBLESHOOTING	40

1. SAFETY PRECAUTIONS

- Before using BACnet Gateway, read this “SAFETY PRECAUTIONS” thoroughly to ensure the correct operation.
- This section describes the important safety information to operate BACnet Gateway.
- The meanings of “CAUTION” are explained as follows.



CAUTION!

This mark indicates the procedures, which might result in the death of or serious injury to the user or service personnel if improperly performed.

This manual is for service personnel authorized to use the BACnet Gateway. Always keep this manual in an easily accessible place for use by authorized service personnel.



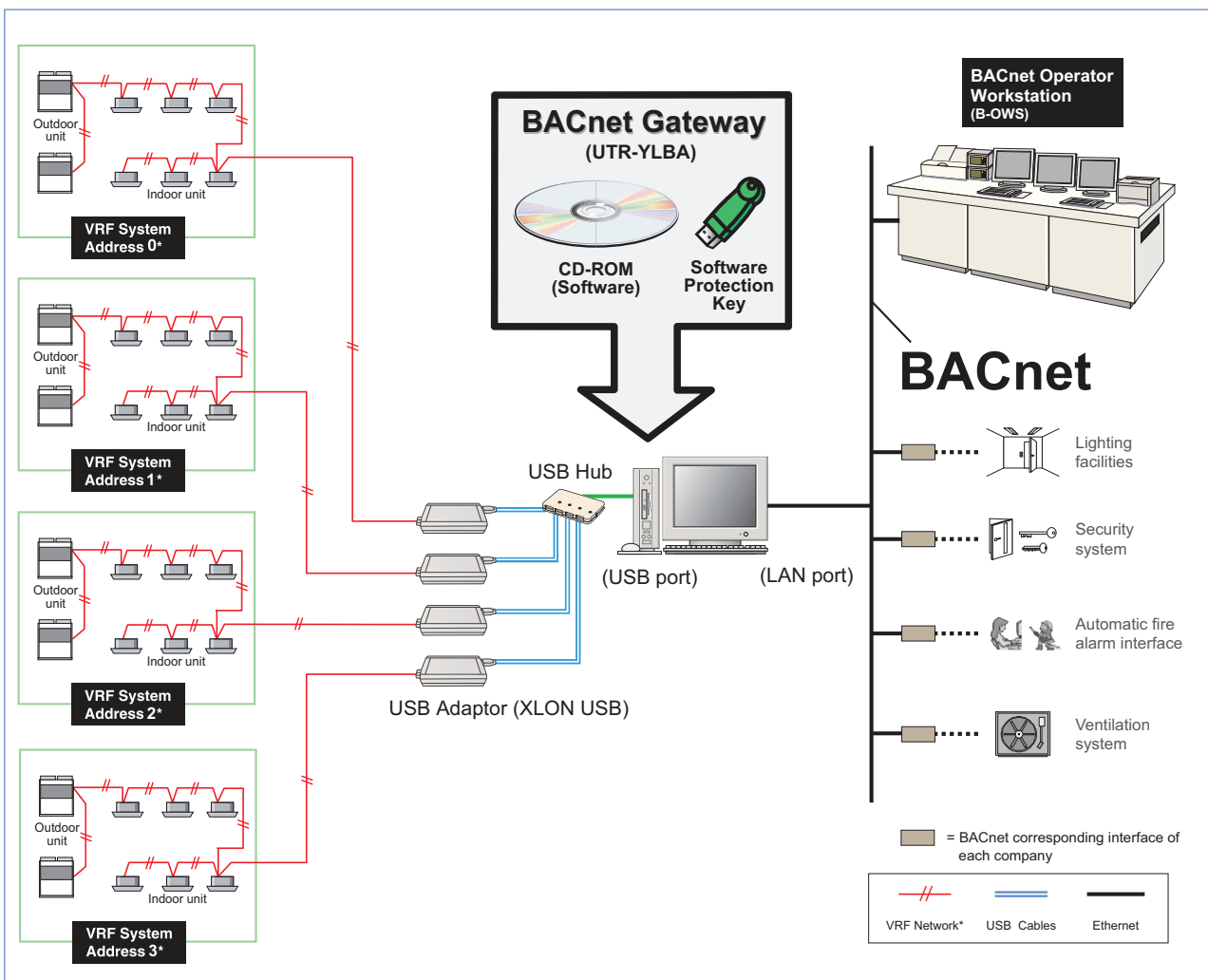
CAUTION

BACnet Gateway for VRF System is a software product running on a PC that controls air-conditioners. Be careful not to turn off the power supply of the PC, nor to finish the application during operation.

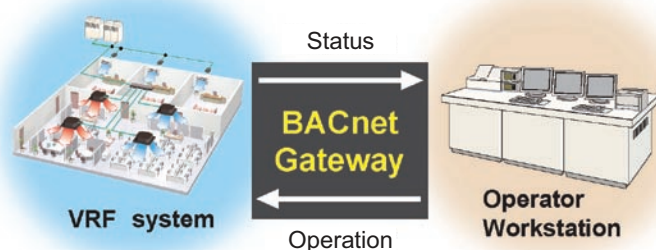
Otherwise, BACnet Gateway might malfunction.

- For the personal computer used as BACnet Gateway, refer to the instruction manual supplied by the PC vendor.
- For XLON USB adaptor used with the BACnet Gateway, refer to the instruction manual supplied by the vendor.
- For use of XLON adaptor, make sure that you follow the instruction manual supplied by the vendor.
- Fujitsu General Limited does not take any responsibility whatsoever for influence that may be caused by use of this product.

2. SYSTEM OUTLINE



ANSI / ASHRAE Standards 135-2001
BACnet Application Specific Controller (B-ASC)
BACnet / IP over Ethernet



The maximum number of connecting systems

VRF System	4 systems
------------	-----------

For the numbers of the Units that can connect with one VRF system, Indoor and Outdoor Units are up to 400 units and up to 100 units respectively.

* VRF System Address:

The numbers from 0 to 3, which are assigned to each VRF system in the BACnet Gateway. (Refer to **4-1. USB Adaptor Connections** on page 7.)

3. SPECIFICATION TABLE

Applicable System

VRF S,V Series

Accessories

CD-ROM (Application and Manual).....(1)
USB Software Protection Key.....(1)

System Requirements for Application

PC (*1)	PC AT Compatible	
OS (English Version)	Microsoft® Windows® XP or 2000 (SP4 or later)	Microsoft® Windows Vista® Home Premium, Business
CPU	Intel® Pentium® Processor 400 MHz or higher	Intel® Pentium®/Celeron®, AMD Athron™/Duron™ Processor 2 GHz or higher
MEMORY	256 MB or more	2 GB or more
DISPLAY	1024 X 768 dots or more, high color or more (Recommended)	
CD-ROM DRIVE	For use of reading manuals, Software and Software Protection Key Driver Installation	
FLOPPY DISK DRIVE	For use of XLON USB Driver Installation (Not necessary when the driver is provided in the CD-ROM or is downloaded)	
INTERFACE (*2)	BACnet Network: Ethernet LAN port, UTP cable VRF Network: XLON USB Adaptor (*3) for USB port connection, twisted pair cable	

Notes

(*1) As Network Converter.

(*2) Use an Ethernet LAN port for BACnet side and a USB port connection XLON Adaptor for VRF System side.
When your PC is equipped with USB ports, which have the same number as the XLON USB Adaptors you need, the adaptors may be connected direct to the USB ports without USB hub. Note that an additional port for the Software Protection Key is required.

(*3) Use XLON USB Adaptor (USB4-WM-FTT) by DH electronics GmbH.

The XLON USB Adaptor requires a power supply (100mA) that will be supplied via a USB hub.

Operation guaranteed specifications (Operation is not guaranteed in other environments.)

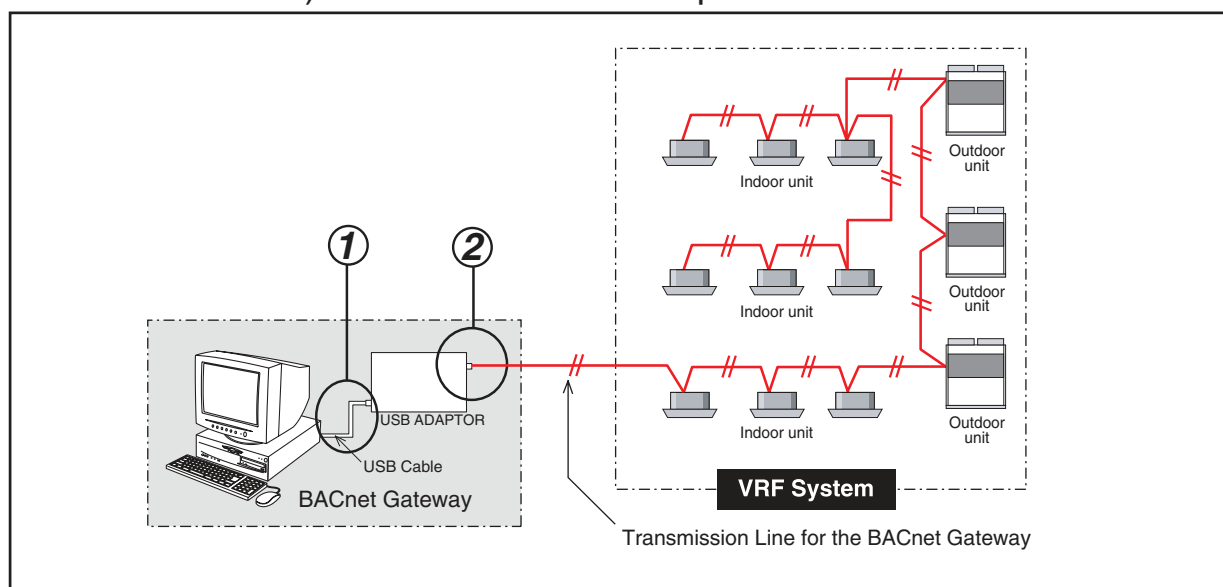
4. INSTALLATION

4-1. USB Adaptor Connections

Login your PC as administrator in Windows XP, 2000 or VISTA.

Before USB Adaptor Connections, make necessary wiring of VRF Network Transmission Line for the BACnet Gateway. The wiring shall be made before applying power supply of VRF System.

- ① Connect between a PC (unused USB port) and the XLON USB Adaptor with the provided USB cable after completion of PC startup.
If installation wizard for the XLON USB adaptor appears, follow the instructions in the following section “XLON USB Device Driver Installation”.
- ② Insert the connector attached with the Transmission Line (non-polar, 2-conductor cable) to the XLON USB Adaptor.



For Wiring of the Transmission Line for the BACnet Gateway

- * Connect Transmission Line for the BACnet Gateway to Indoor or Outdoor unit. (And, connect shield of the Transmission Line to the earth terminal of the unit side.)

For VRF System Address and the XLON USB Adaptor

- * VRF System Addresses are assigned in order of the connection of USB adaptors to PC. (Refer to **2. SYSTEM OUTLINE** on page 5 for the outline and **NOTES** on page 14 for checking address.)
- * Installation of XLON USB Driver is required for each USB port. Install the USB Driver according to **4-2. XLON USB DEVICE DRIVER INSTALLATION** on page 8 when the USB Adaptor is connected to a port that the Driver has not been installed.

For USB Hub

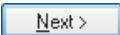
- Use a USB hub with 4 ports or more and power supply for supplying power to the XLON USB Adaptor.
- When your PC is equipped with USB ports, which have the same number as the XLON USB Adaptors you need, the adaptors may be connected direct to the USB ports without USB hub. Note that an additional port for the Software Protection Key is required.

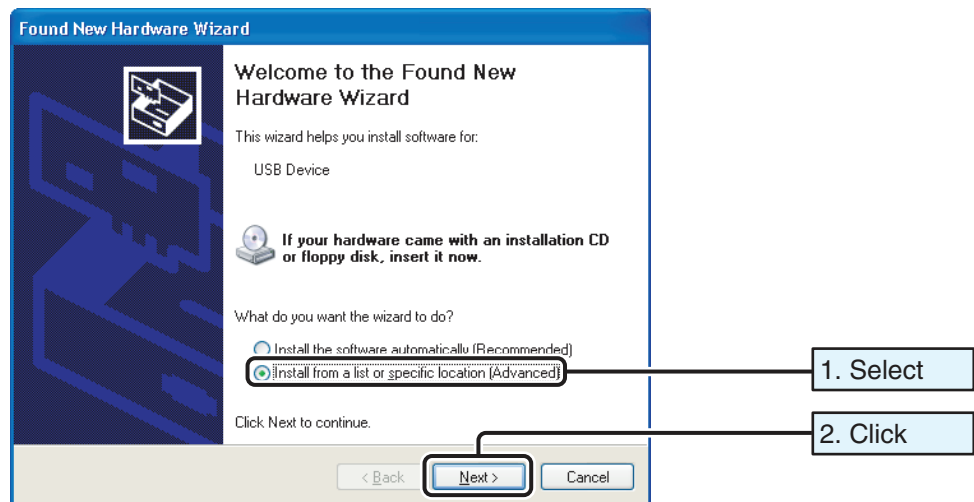
4-2. XLON USB Device Driver Installation

On completion of the connection between a PC and the USB Adaptor (Refer to **4-1. USB Adaptor Connections.**), the Installation Wizard Window shown below is automatically displayed.

If the XLON USB Device Drivers have already been installed on a PC, this installation is not required. The display in the procedure: ① does not appear.

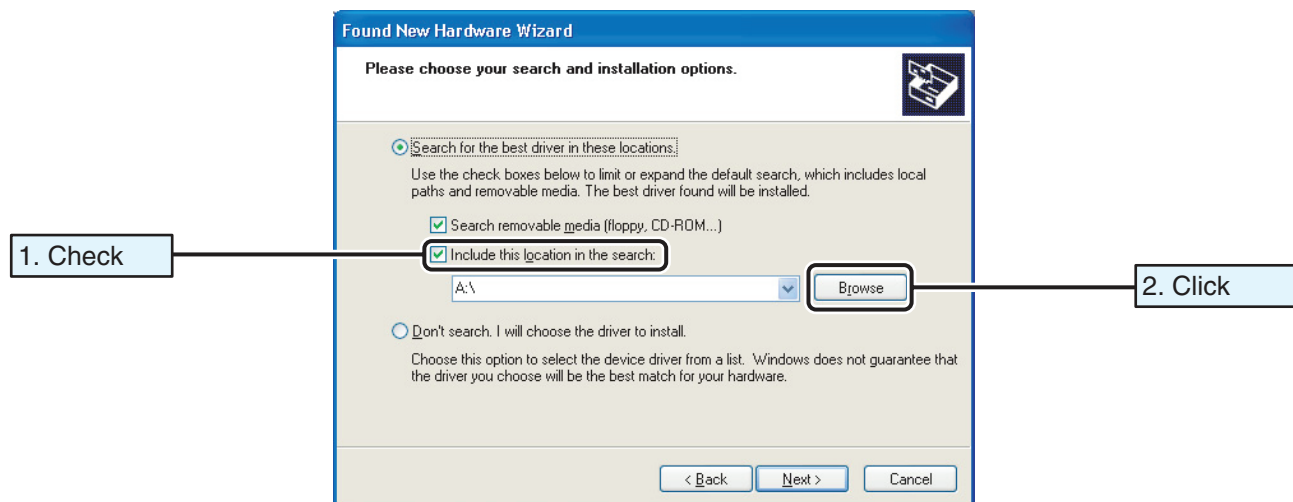
Floppy Disk attached in the XLON USB Adaptor contains the drivers. Please use the latest version on the website at <http://www.dh-electronics.de/eindex.htm>, if available.

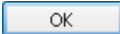
- ① Select [Install from a list or specific location (Advanced)] and click the  button.

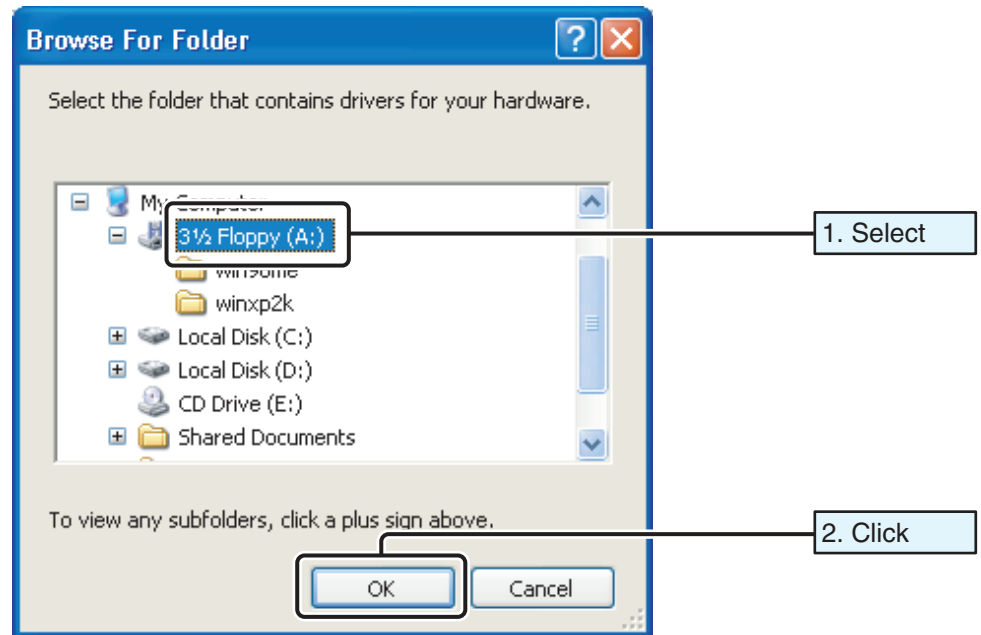


- ② Insert the Floppy Disk into a Floppy Disk Drive.

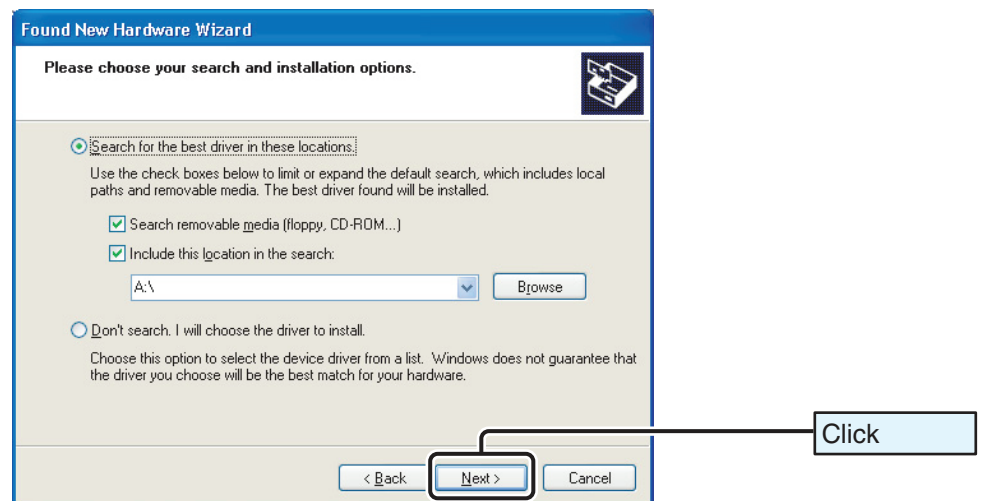
- ③ Check [Include this location in the search:] and click the  button.



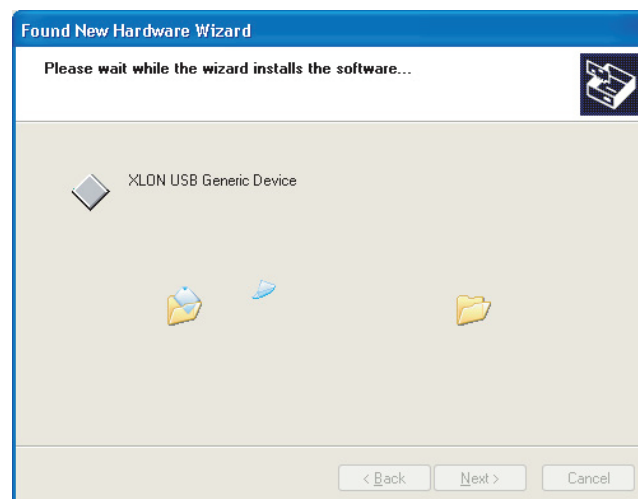
- ④ Select [3 1/2 Floppy (A:)] and click the  button.



- ⑤ Click the  button. The driver is found and the installation starts.



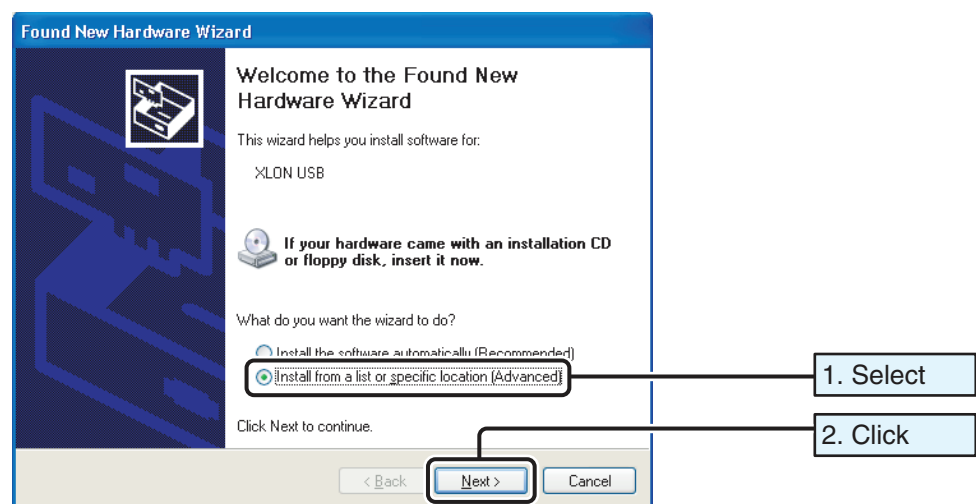
Window display while the driver is being installed.



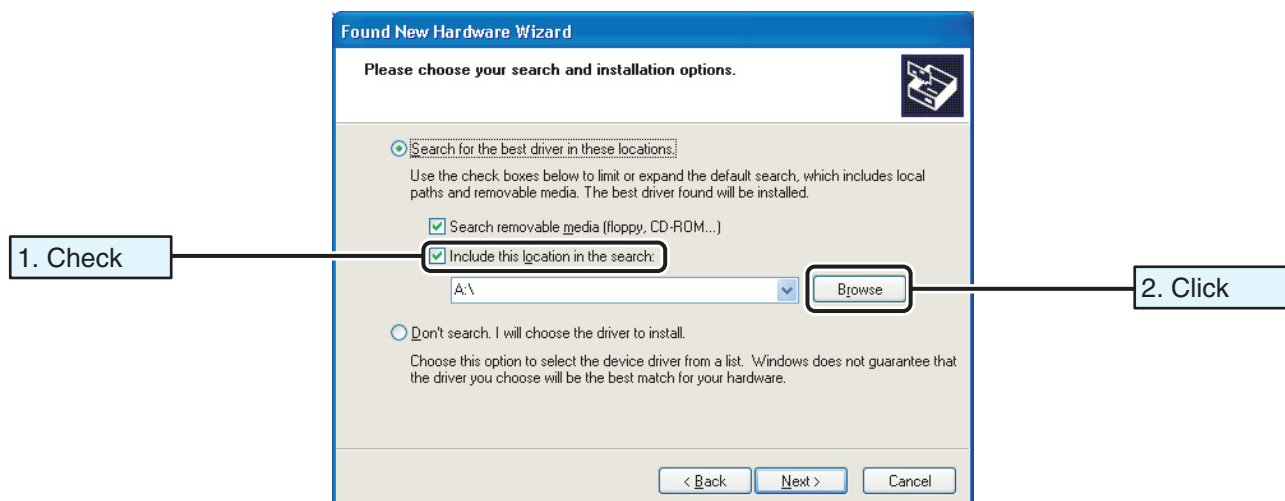
- ⑥ When the installation of the first driver is complete, the window shown below appears. Then, click the **Finish** button.



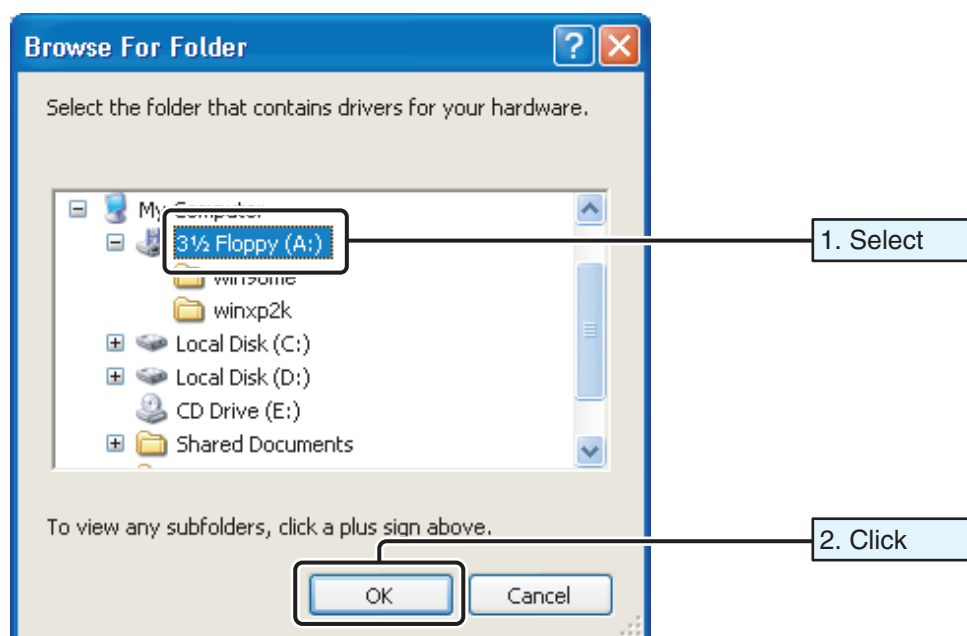
- ⑦ The installation of the second driver automatically starts. Select **[Install from a list or specific location (Advanced)]** and click the **Next >** button.



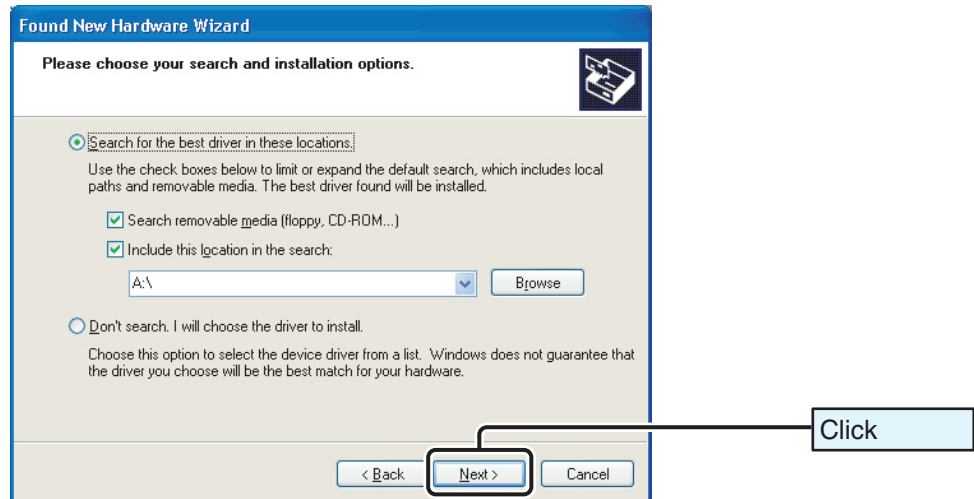
- ⑧ Check **[Include this location in the search:]** and click the **Browse** button.



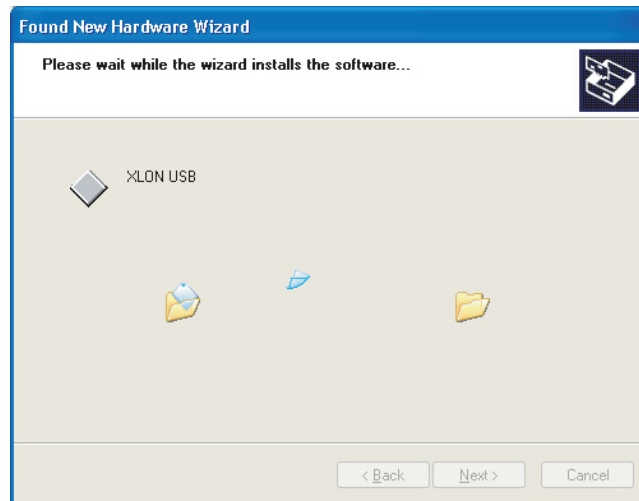
- ⑨ Select **[3 1/2 Floppy (A:)]** and click the **OK** button.



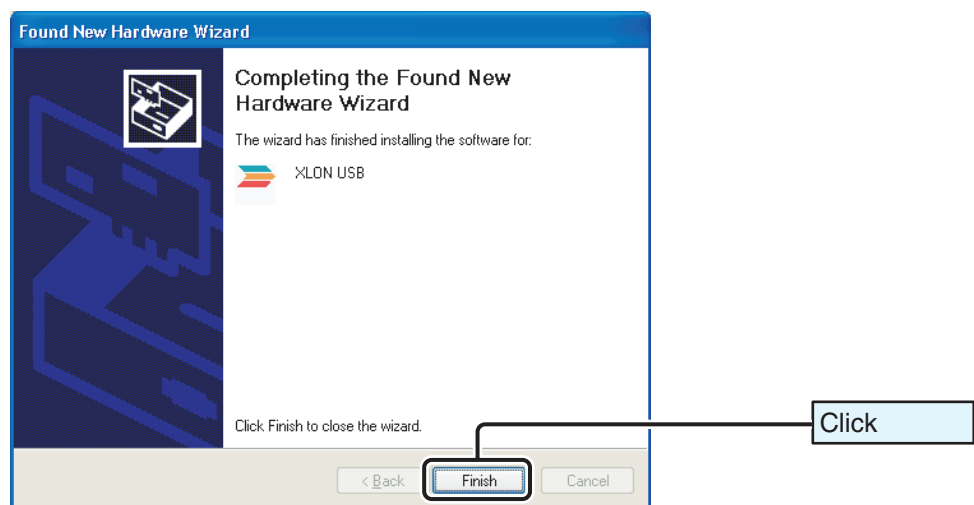
- ⑩ Click the **Next >** button. The driver is found and the installation starts.




Window display while the driver is being installed.



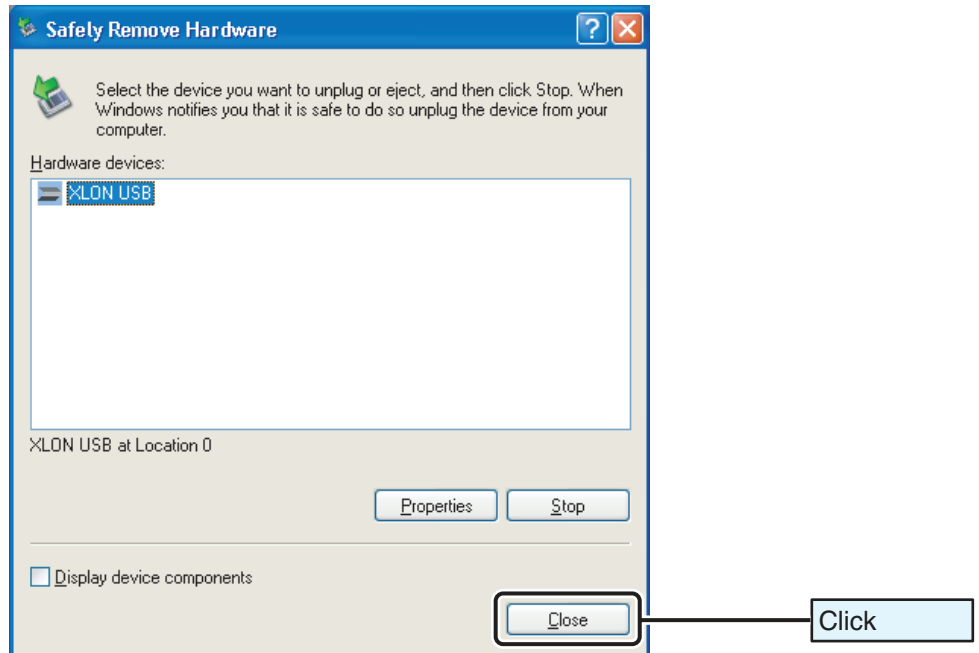
- ⑪ When the installation of the second driver is complete, the window shown below appears. Then, click the **Finish** button.



- ⑫ Double-click the  icon on the Windows desktop.



- ⑬  **XLON USB** appears on the window if the device drivers have been successfully installed. Click the  button.

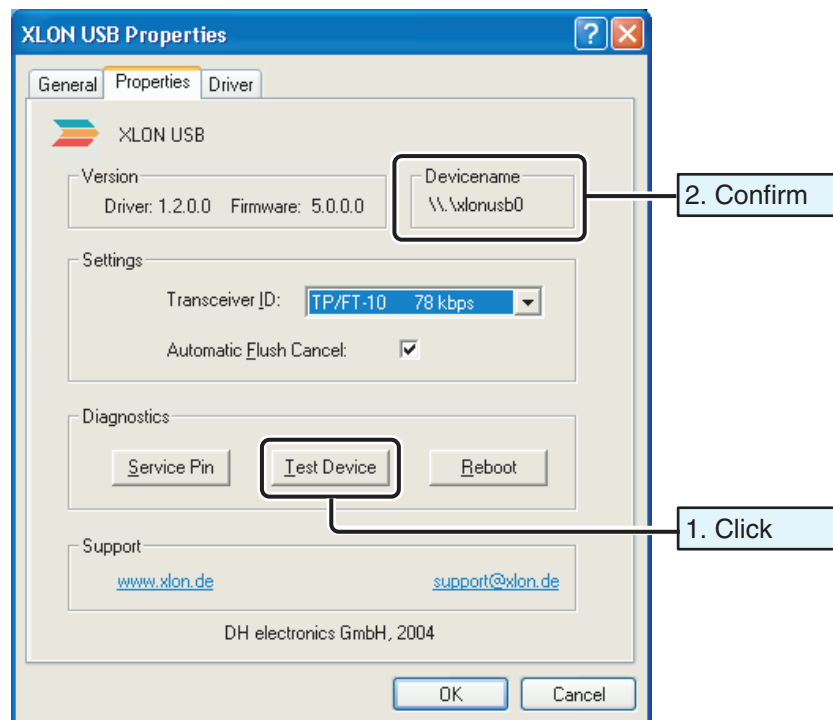


Notes

1. XLON USB Adaptor can be tested whether it is working properly. After the above procedure (12), click the **Properties** button in the procedure (13). And, click the **Test Device** button on the window of **[XLON USB Properties]** shown below. Then, yellow LED on the adaptor flashes for a moment.
 - * **[XLON USB Properties]** can also be referred from the Device Manager.
 - * Do not execute **[Test Device]**, **[Service Pin]** and **[Reboot]** of the **[Diagnostics]** column during the BACnet Gateway is in operation.
2. Relationship between XLON USB Adaptor and VRF System Address on the BACnet Gateway can be checked on the window of **[XLON USB Properties]**.

A recognition number, which is a VRF System Address, is indicated in the **[Devicename]** column on the window of **[XLON USB Properties]**. (Refer to **2. SYSTEM OUTLINE** on the page 5.)


Ex.) \\.\xlonusb0 → VRF System Address connected to this adaptor is “0”.



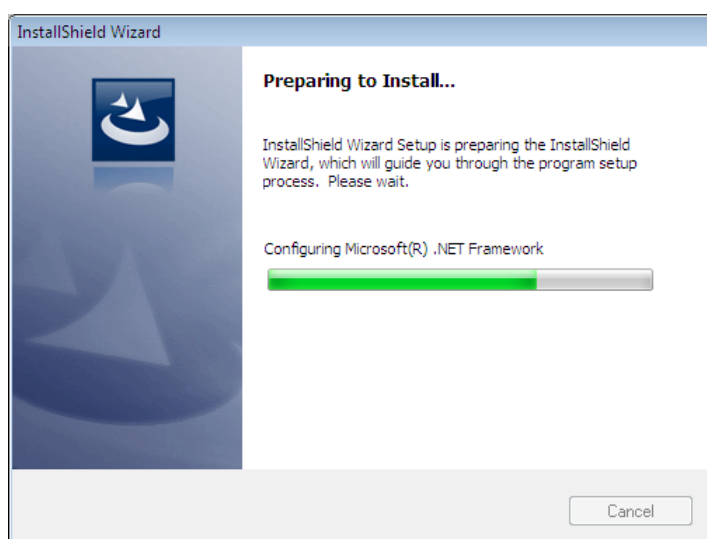
4-3. BACnet Gateway Application Installation

■ BACnet Gateway Application Installation

*DO NOT insert the WIBU-KEY into the PC yet!

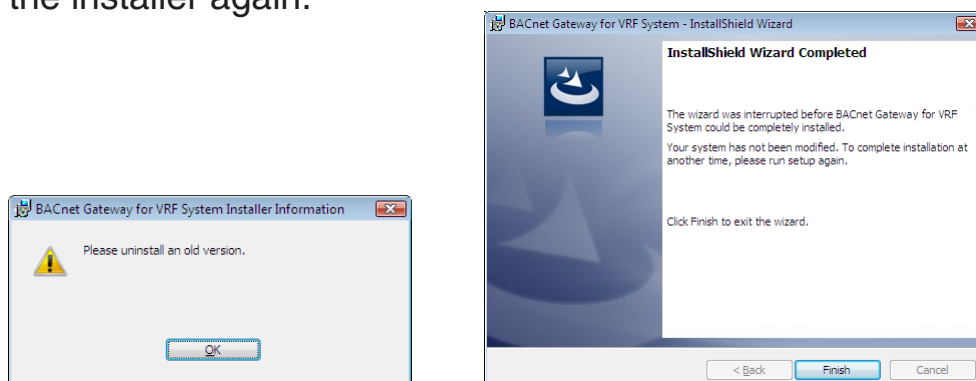
- ① Set the Application Disc in a CD-ROM Drive.
- ② Double-click [ **setup.exe**] on the root directory of the Application CD-ROM.
- ③ The installer will be started.

.NET Framework 1.1 will be installed automatically if it has not been installed yet. While installing, restart your PC if the installer asks you to. Then, the installation process will continue automatically.

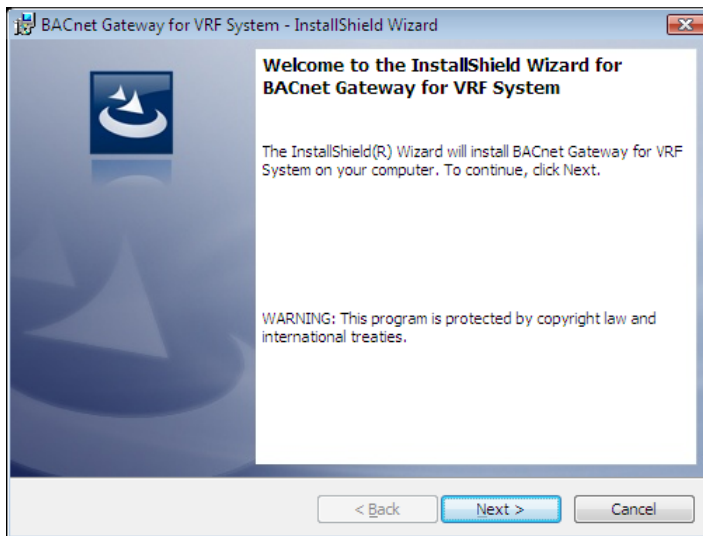


- ④ After finishing the installation of the **.NET Framework 1.1**, the installer will start searching for old versions of the **BACnet Gateway**. The installation screen will not be shown during the searching process, please be patient and wait for a while.

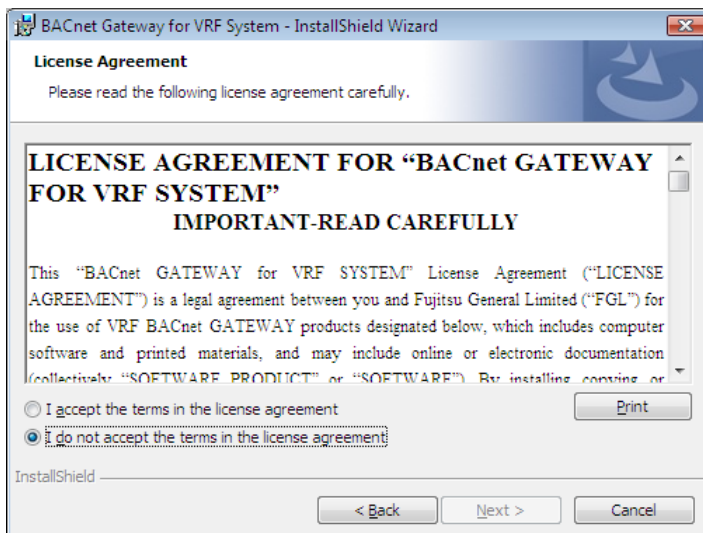
If any old version is found, the below screen will appear. Close both the message box and the installer, uninstall these old versions, and then run the installer again.



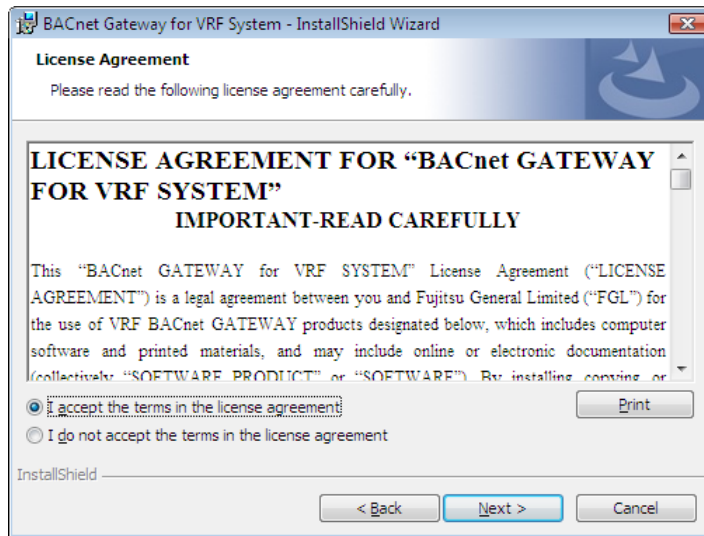
- ⑤ After the searching process is finished, the below screen will appear. Click **Next >** to start the **BACnet Gateway** installation.



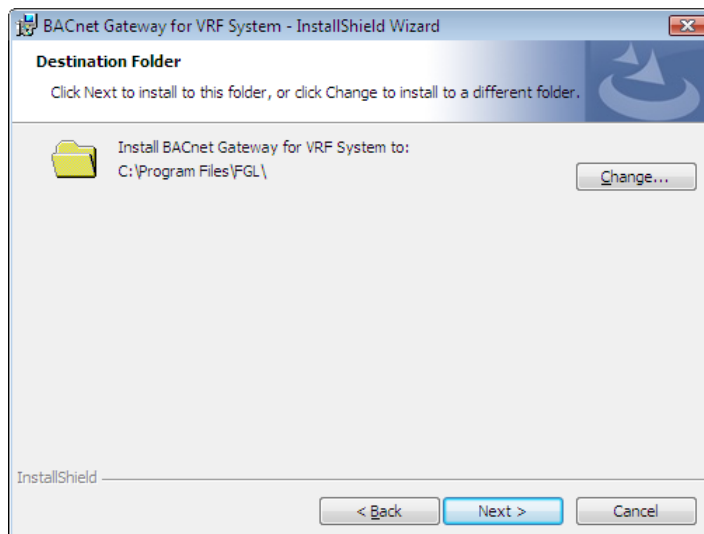
- ⑥ A license agreement screen will be shown.

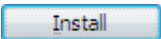


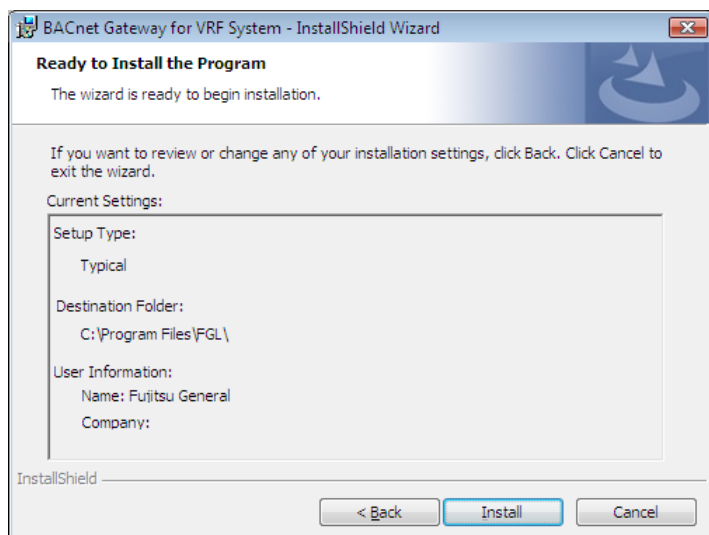
- ⑦ Confirm the agreement content, check **[I accept the terms in the license agreement]** to agree with the license agreement, and then click **Next >** to continue.



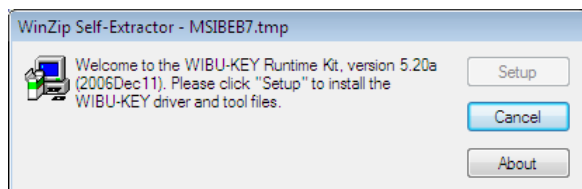
- ⑧ The installation destination screen will be shown. To install to a different folder, click **Change...**. After finishing the destination selection, click **Next >** to continue.



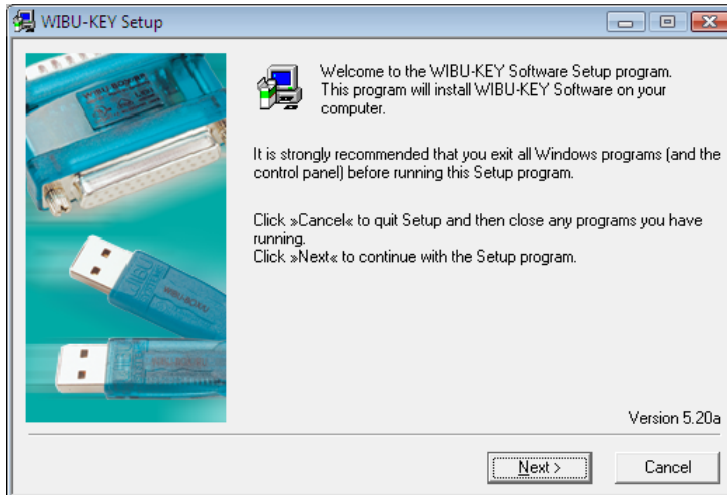
- ⑨ An installation confirmation will be shown. After confirming, click .



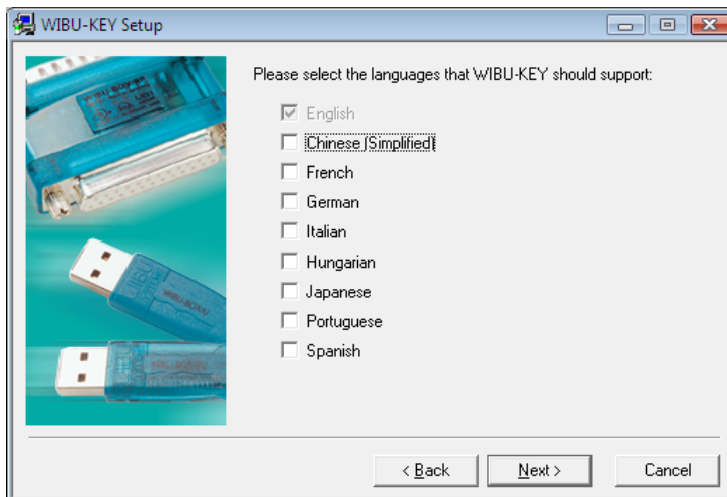
- ⑩ WIBU-KEY installation will be started.



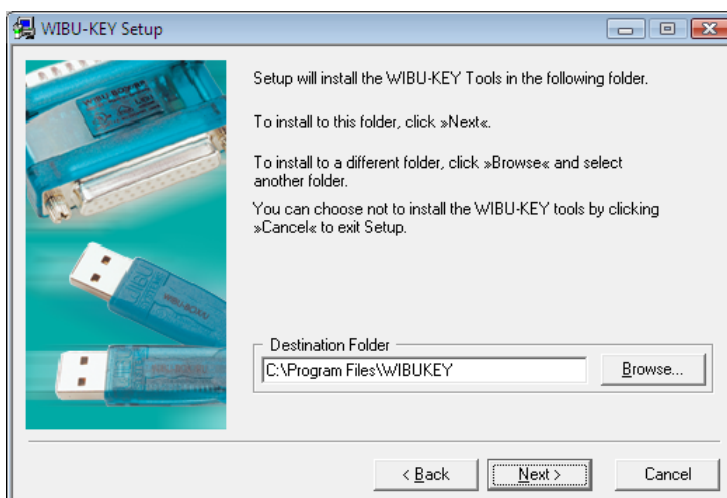
11 Click **Next >**.



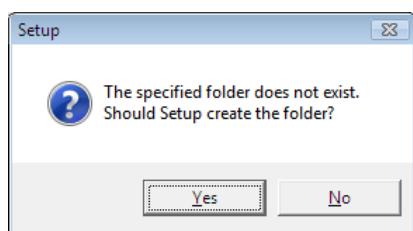
12 Leave the language selection screen by its default values, and click **Next >**.



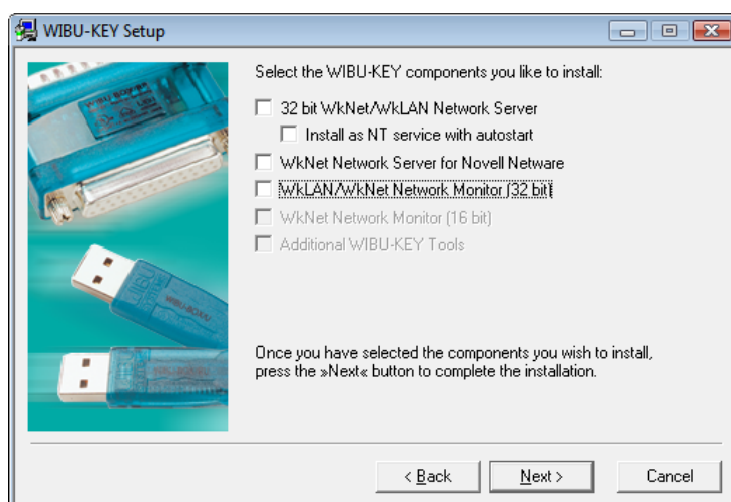
13 The installation destination screen will be shown. To install to a different folder, click **Browse...** and select another folder. After finishing the destination selection, click **Next >** to continue.



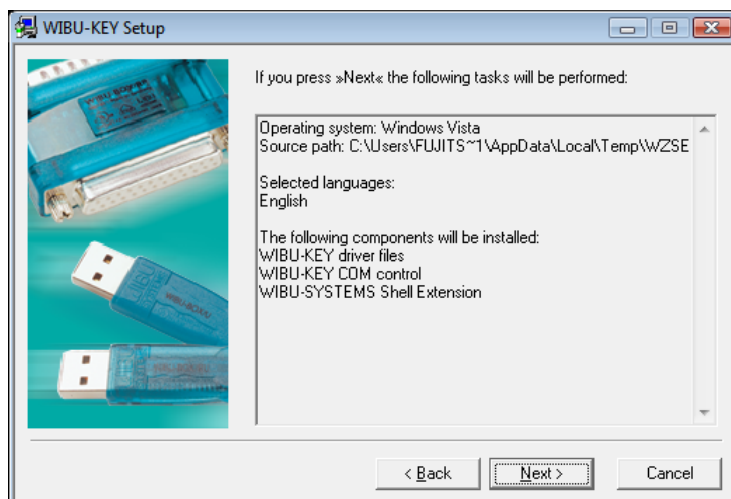
- ⑭ If the specified folder does not exist, a confirmation screen will appear, and click **Yes** to create a folder.



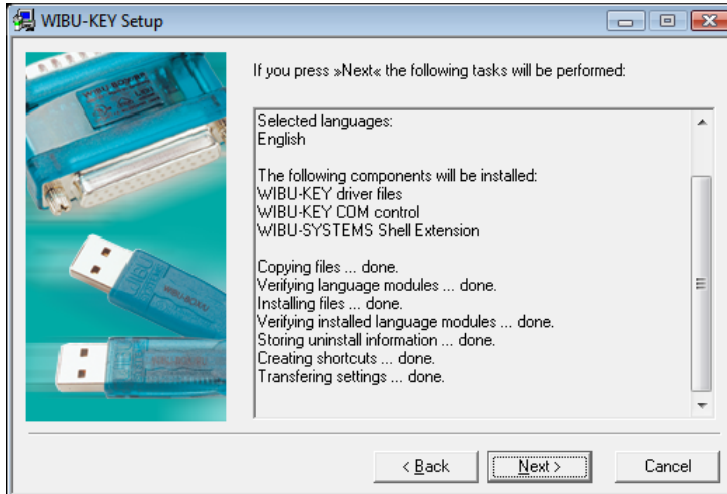
- ⑮ A window for installation components will be shown, un-check all check-boxes, and then click **Next >**.



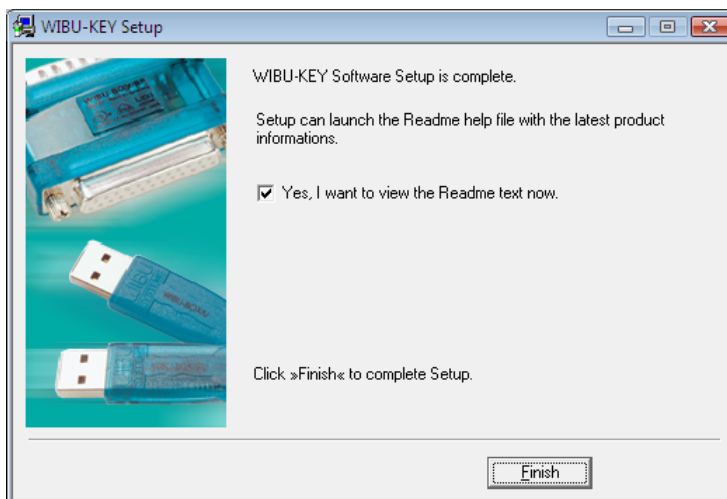
- ⑯ A confirmation screen will be shown. After confirming, click **Next >**.



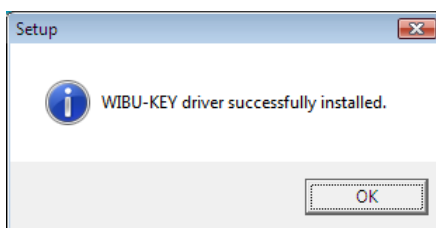
- ⑪ Installation logs will be shown. After confirming, click .



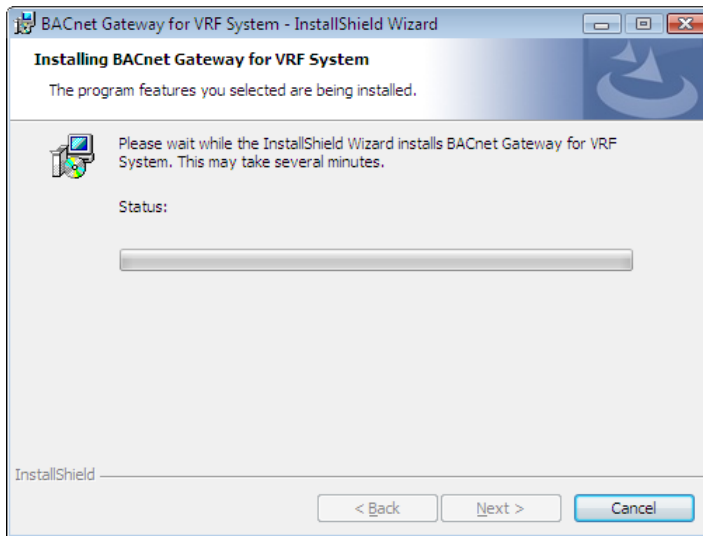
- ⑫ An installation completion screen will be shown. Click .



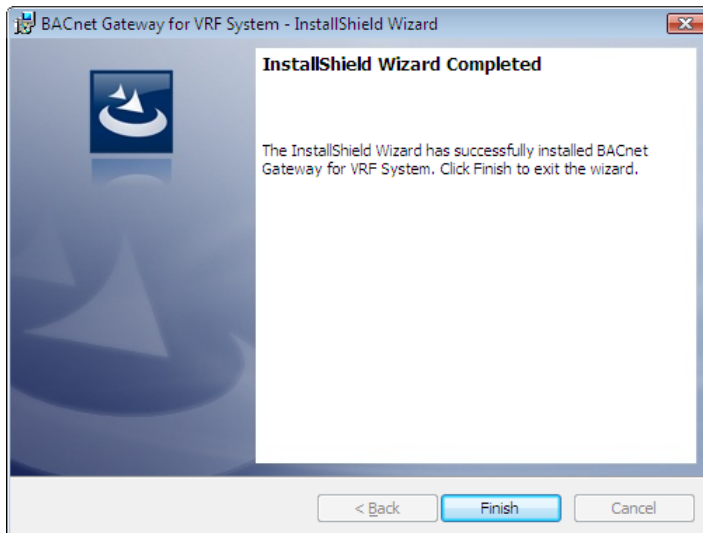
- ⑬ The installation completion message will be shown again, and click .

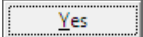


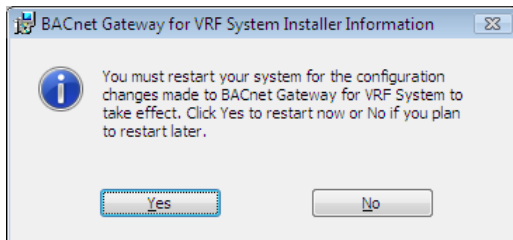
- ②① The **BACnet Gateway** installation screen will be displayed at the background automatically.



- ②② An installation completion screen will be shown, and click .



- ②③ A message requesting to restart your PC will be shown, and click  to restart.

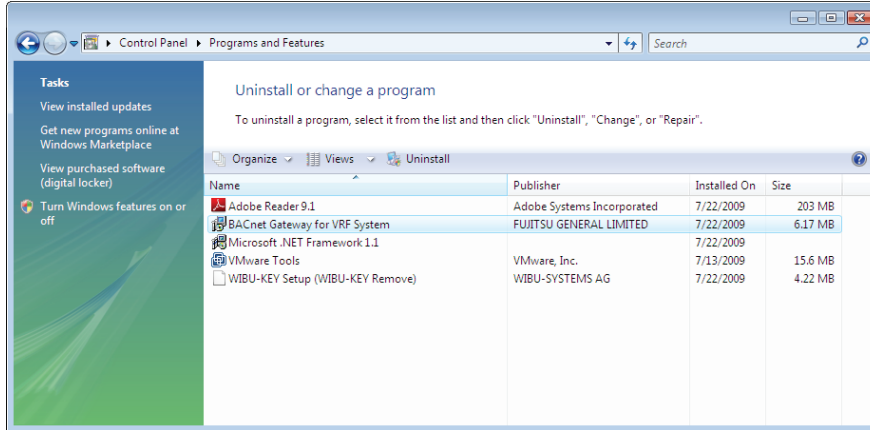


- ②④ Insert the WIBU-KEY into your PC, and it will be recognized automatically.

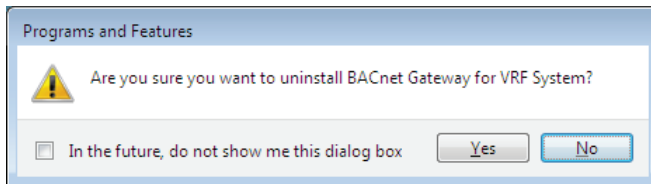
■ BACnet Gateway Application Uninstallation

- ① Open [ **Control Panel**] → click [ **Add or Remove Programs**], and choose [ **BACnet Gateway for VRF System**].

Then click “Uninstall” at the top part of the window.



- ② When a confirmation message appears, click  to confirm and continue.



5. INITIAL SETTING

Set the Initial Setting under the condition that the USB Adaptor is connected. (Refer to page 7.) And, make sure that power supply for VRF System (all Indoor and Outdoor units) are applied.

When the application (VRF Gateway.exe) starts for the first time, the Initial Setting window shown below appears.

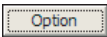
From the second time onwards, set up the initial setting from the command of **[Tool] → [Reset]**. (Refer to **6-2. Main Screen, ■ Explanation for items in the menu bar** on page 29.)

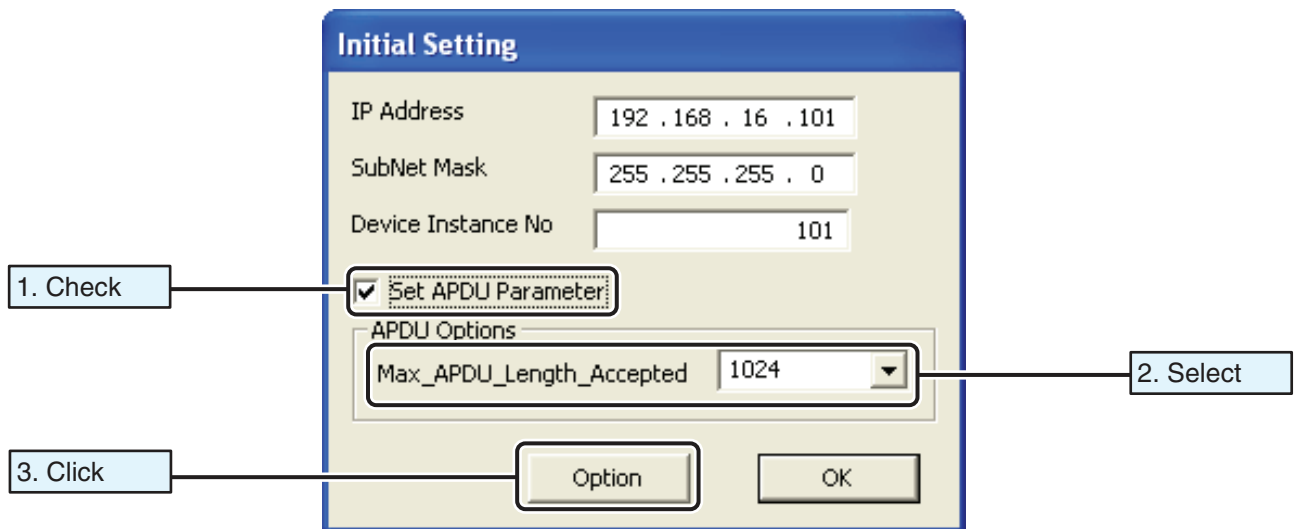
① Input each initial setting item.

1. Input “IP Address” in the column of **[IP Address]**.
2. Input “Subnet Mask of application” in the column of **[Subnet Mask]**.
3. Input “Device Instance number of BACnet Gateway” in the column of **[Device Instance]**.

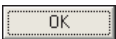
The screenshot shows the 'Initial Setting' window. It has three input fields at the top: 'IP Address' (192 . 168 . 16 . 101), 'SubNet Mask' (255 . 255 . 255 . 0), and 'Device Instance No' (101). Below these is a checkbox 'Set APDU Parameter' which is unchecked. Underneath is a section 'APDU Options' with a dropdown 'Max_APDU_Length_Accepted' set to 1024. At the bottom are 'Option' and 'OK' buttons. Three lines with labels '1. Input', '2. Input', and '3. Input' point to the IP Address, SubNet Mask, and Device Instance No fields respectively.

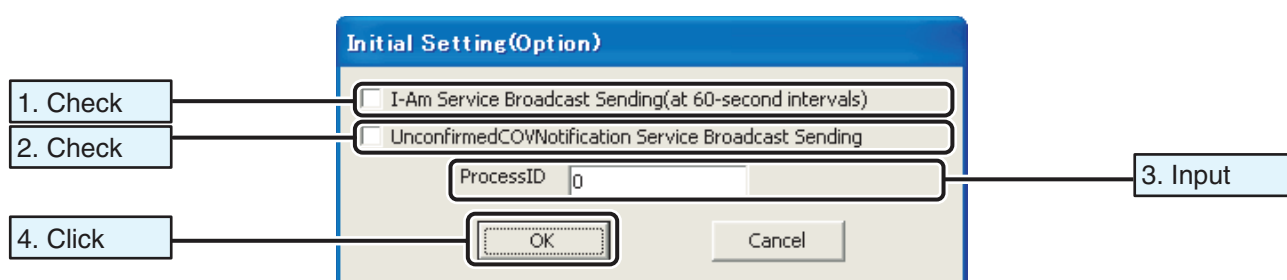
② Set APDU Parameter.


1. Check in the column of **[Set APDU Parameter]**.
2. Select an arbitrary number of the max. APDU length (byte) from the pull-down menu of **[Max_APDU_Length_Accepted]**.
3. Click the  button.

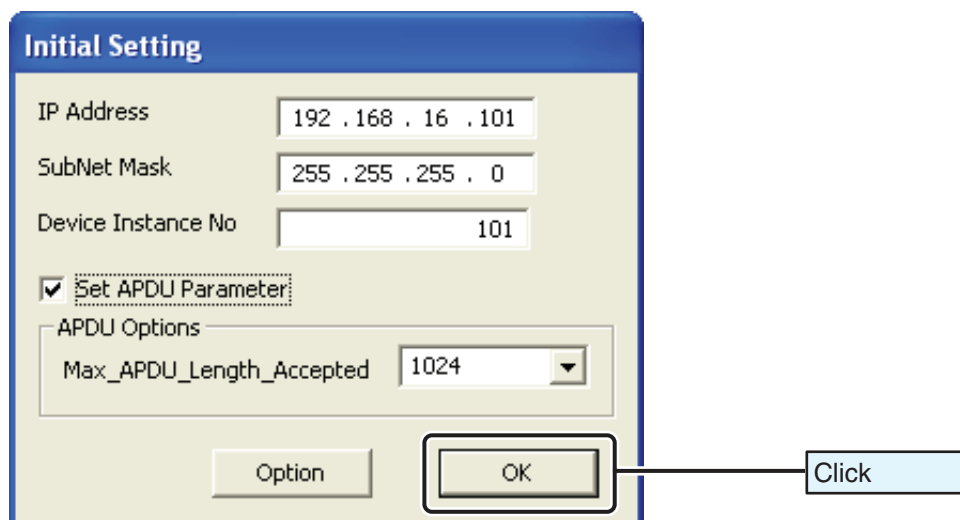


③ Set Initial Setting (Option).

1. Check in the box of [**I-Am Service Broadcast Sending (at 60-second intervals)**] if necessary.
2. Check in the box of [**UnconfirmedCOVNotification Service Broadcast Sending**] if necessary.
3. Input the process ID for COV Notification.
4. Click the  button.

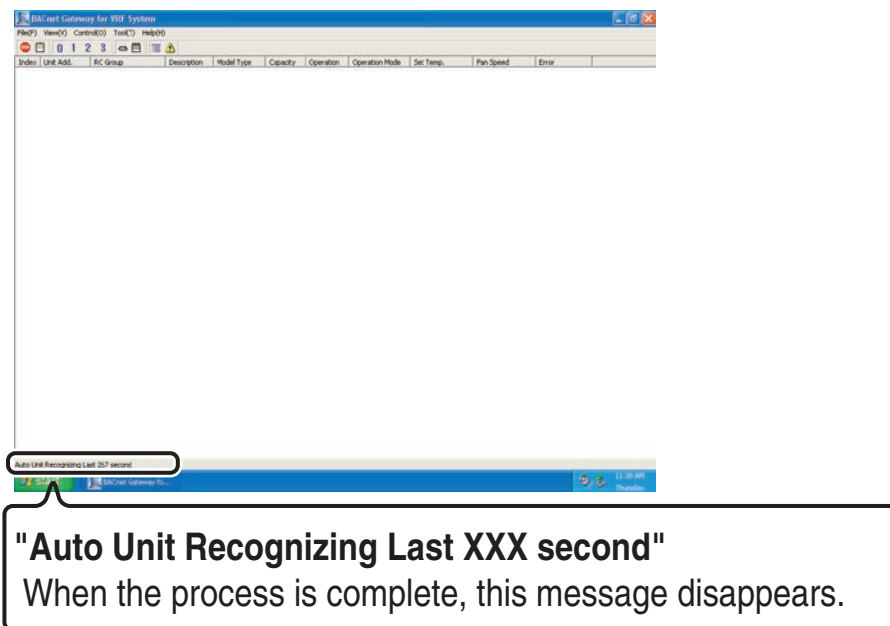


- ④ Click the  button. The Initial Setting window is closed and unit recognition process for indoor and outdoor units starts.



- ⑤ The message "Auto Unit Recognizing Last XXX second" appears in the lower left corner of the window shown below when the Unit Recognition Process is in operation. The process is automatically complete and this message disappears. It will take about 5 minutes or more for this process to be completed.

Window display when Unit Recognition Process in operation



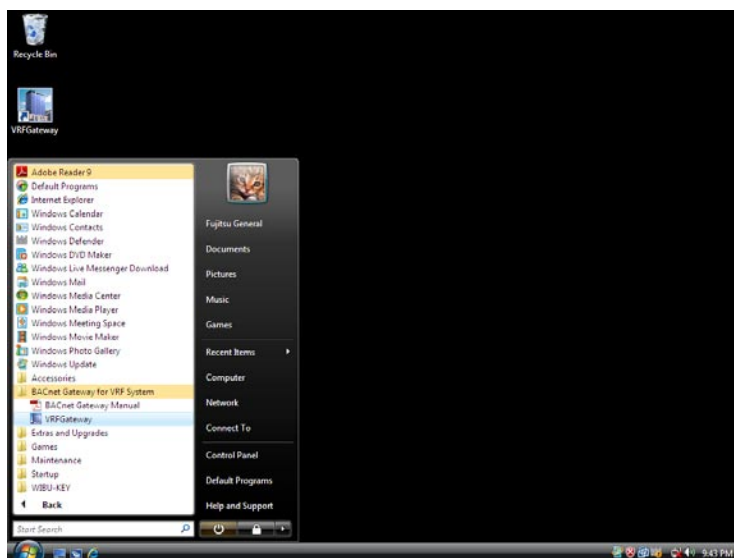
6. OPERATION

6-1. Startup and Shutdown (Close) of the BACnet Gateway

■ Startup of Application

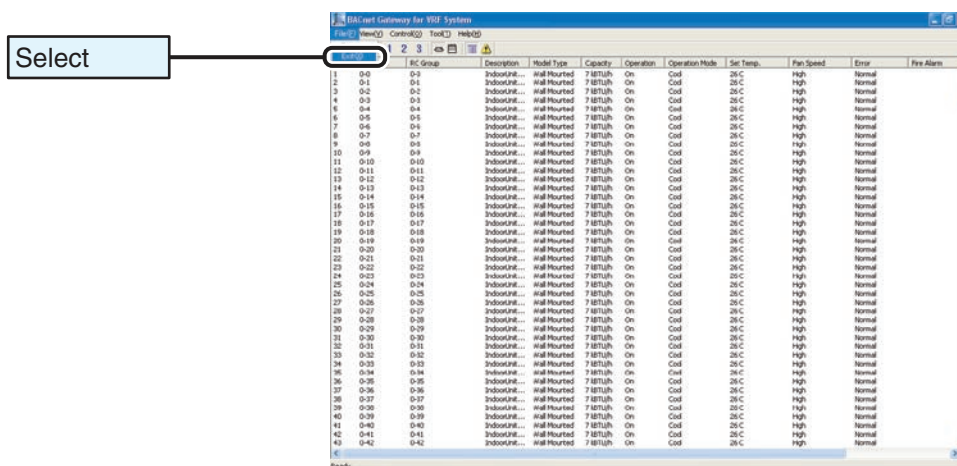
Make sure that USB Adaptor Connections (Refer to page 7.) are completed and the Ethernet cable for the BACnet Gateway is connected to LAN port of the PC before starting up the application.

- (a) Select **[BACnet Gateway for VRF System]** from the Windows START menu.
Or
- (b) Double-click the icon: **[BACnet Gateway for VRF System]** on Desktop.



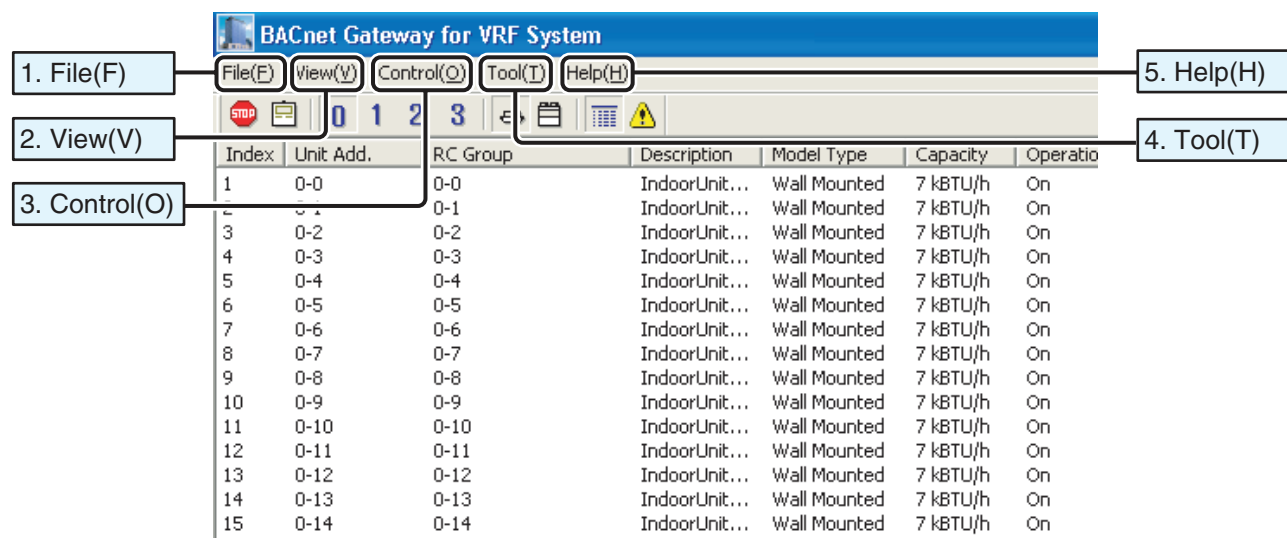
■ Shutdown (Close) of Application

Select the menu items in order of **[File(F)]** → **[Exit(X)]** from the menu bar.



6-2. Main Screen

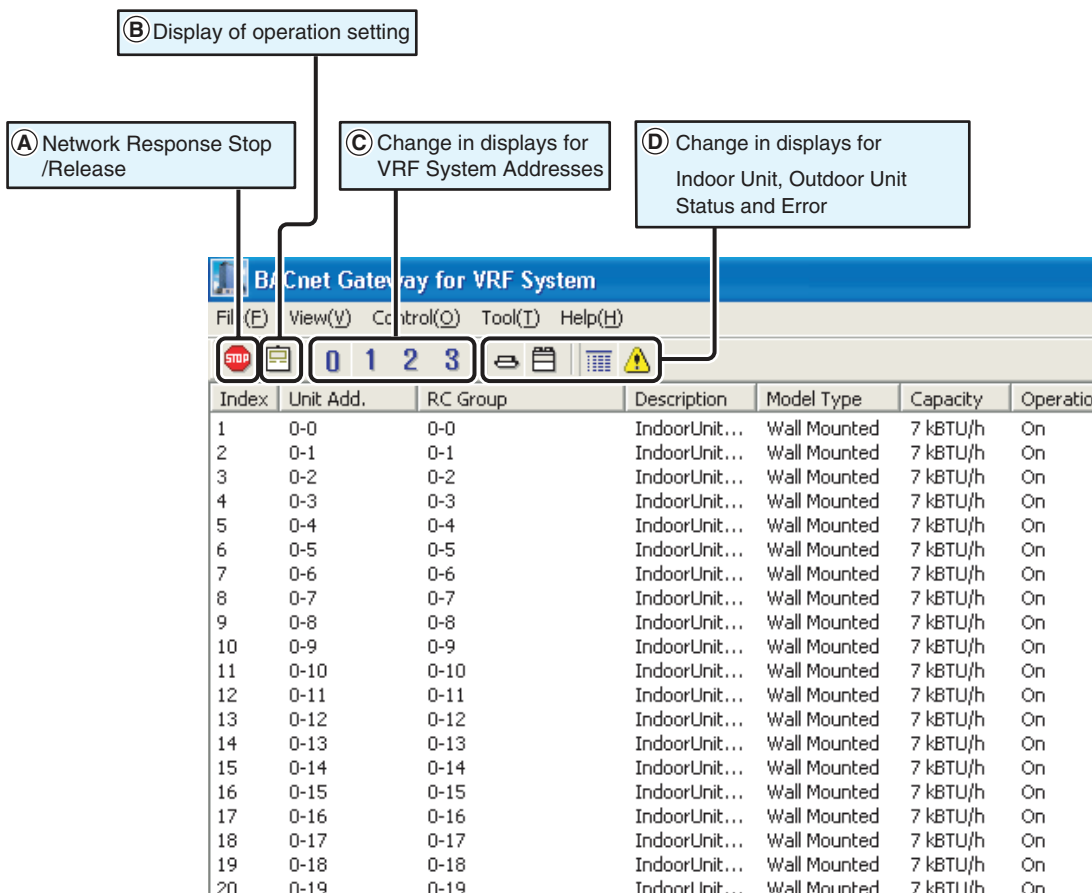
■ Explanation for items in the menu bar



(Reference)

Command name		Contents		Tool bar
1. File(F)	Save	Unit File	Unit address file is saved.	-
	Exit	-	Application is closed.	
2. View(V)	VRF System	0	Display is changed to a list for the System Address: 0.	Ⓒ Ⓓ
		1	Display is changed to a list for the System Address: 1.	
		2	Display is changed to a list for the System Address: 2.	
		3	Display is changed to a list for the System Address: 3.	
	Unit	Indoor Unit	Display is changed to a list for Indoor Units.	
		Outdoor Unit	Display is changed to a list for Outdoor Units.	
	List	Status	Display is changed to a list for Status.	
		Error	Display is changed to a list for Error.	
3. Control(O)	Gateway Stop	-	Stop Network Response (BACnet side).	Ⓐ
	Out of Service	False	"Out of Service" for all objects of indoor / outdoor units is released.	-
	Setting Indoor Unit	-	Operation screen for Indoor Units is displayed.	Ⓑ
4. Tool(T)	Reset	-	Command for Initial Setting. (Refer to page 24.)	-
	(Fire Alarm Setting)	-	Fire Alarm Setting. * Applicable only at Option Setting	
	Description Setting	-	Setting Description property of objects for Indoor and Outdoor Units.	
	Add Setting Status List	-	Command items that are sent from other BACnet devices to this Gateway for Indoor Units are additionally displayed in a Status List.	
5. Help(H)	Version Info.	-	Version information is displayed.	-



■ Explanation for function of the tool bar buttons

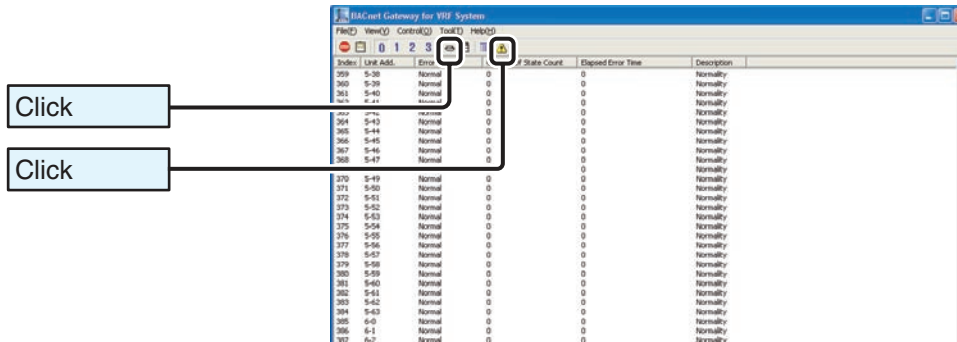


- (A) Stop and Release Network Response**
 When the button is clicked, a response is stopped. When the button is clicked again, the response is released. (Refer to **6-6. Stop of Network Response.**)
- (B) Display of Operation Setting Screen**
 When the button is clicked, an operation screen is displayed.
- (C) Change in displays of lists for VRF System Addresses: 0-3**
 When a button is clicked, a list of addresses for the clicked number is displayed.
- (D) Indoor and Outdoor units, and their conditions (Status/Error) are displayed. In default, Status in Indoor Units is displayed.**

■ Explanation for display items

Ⓐ Status of Indoor Units (Default)

Click the  (Indoor Unit) and  (Status) buttons to display Status of Indoor Units.



Items displayed in the Status List of Indoor Units

Items	Remarks
Index	1 - 400 (In numerical order of unit address)
Unit Add.	0 - 99, 0 - 63
RC Group	0 - 99, 0 - 63 (When remote control group is set up.)
Description	Explanation for Indoor units(Items in Description Properties)
Model Type	Type name of models
Capacity	Capacity of Indoor units
Operation	Status of Operation
Operation Mode	Status of Operation mode * When "Operation" is in OFF, this item is not reflected.
Status of Set Temperature	Status of Temperature setting
Fan Speed	Status of Fan speed
Error	Error status: "Normal" / "Abnormal"
(Fire Alarm) * Applicable at Option Setting.	Each Instance No. for Device, Multi-state Input and Binary Value * Displayed only when setup for Instance No. is completed.
(Emergency Status) * Applicable at Option Setting.	Status of "Normal", "Fire Emergency" and "Waiting for Release"



The above Status List and Status List of setting (Blue letters) from BACnet are alternately displayed by the **[Add Setting Status List]** command.

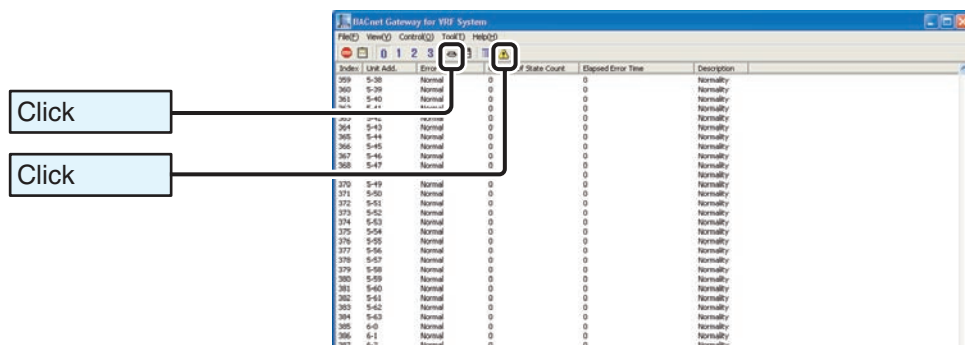
Items displayed in the Status List of Indoor Units setting, which are added by the **[Add Setting Status List]** command.

Items	Remarks
Operation	Status of Operation setting
Operation Mode	Status of Operation mode setting
Set Temp.	Status of Temperature setting
Fan Speed	Status of Fan speed setting

Note: For the items without setup from BACnet, hyphen: (-) is displayed.

Ⓑ Error of Indoor Units



Click the  (Indoor Unit) and  (Error) buttons to display Error of Indoor Units.

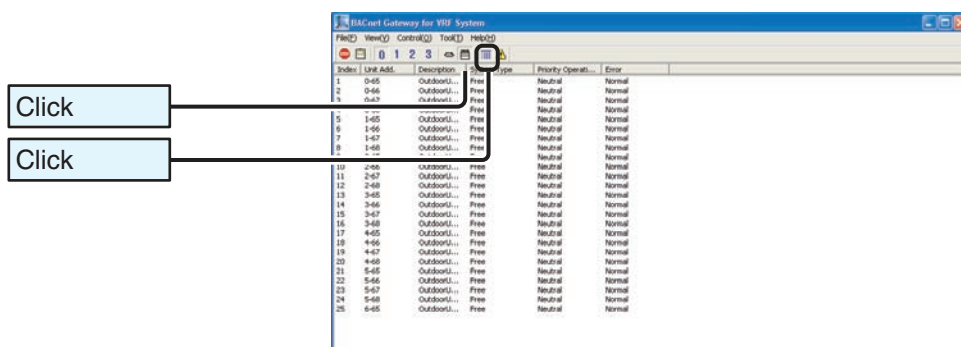


Items displayed in the Error List of Indoor Units

Items	Remarks
Index	1 - 400 (In numerical order of unit address)
Unit Add.	0 - 99, 0 - 63
Error	Status of Error "Normal" / "Abnormal"
Change Of State Count	The number of error occurrence * Set of error occurrence and restoration is counted as once.
Elapsed Error Time	Elapsed time from error occurrence * At intervals of 0.5 hours (30 minutes)
Description	Error items

© Status of Outdoor Units



Click the  (Outdoor Unit) and  (Status) buttons to display Status of Outdoor Units.

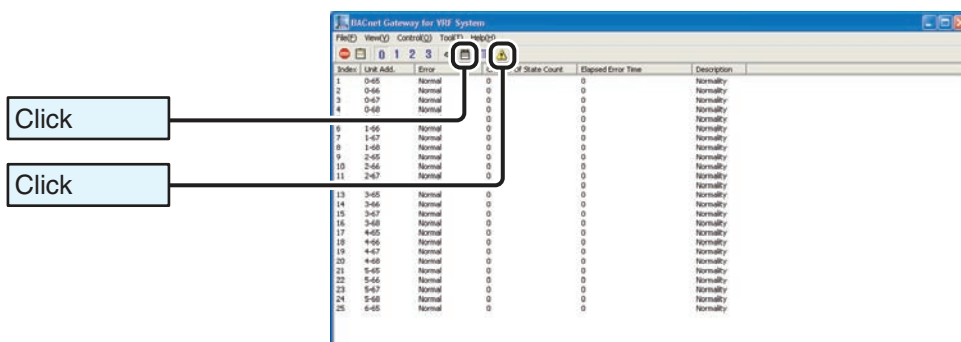


Items displayed in the Status List of Outdoor Units

Items	Remarks
Index	1 - 100 (In numerical order of unit address)
Unit Add.	0 - 99, 65 - 68 * The unit "65" is master unit and the units from "66" to "68" are slave unit.
Description	Explanation of Outdoor Units (Description in "Description Properties")
System Type	System Type * For slave units, it is the same as master units'.
Priority Operation Mode	Status of Priority Operation * For slave units, it is the same as master units'.
Error	Error status: "Normal" / "Abnormal"

④ Error of Outdoor Units

Click the  (Outdoor Unit) and  (Error) buttons to display Error of Outdoor Units.



Items displayed in the Error List of Outdoor Units

Items	Remarks
Index	1 - 100 (In numerical order of unit address)
Unit Add.	0 - 99, 65 - 68 * The unit "65" is master unit and the units from "66" to "68" are slave units.
Error	Status of Error "Normal" / "Abnormal"
Change Of State Count	Number of error occurrence * Set of error occurrence and restoration is counted as once.
Elapsed Error Time	Elapsed time from error occurrence * At intervals of 0.5 hours (30 minutes)
Description	Error Items

Notes



1. If communication error between this BACnet Gateway and units (Indoor and/or Outdoor), items on respective lists of corresponding units turn to red color.
2. The item in the **[Index]** column is displayed with red letters when other peripheral devices such as Central PC and PC-Controller are executing the initial setting in VRF System. The display returns to the original display in a few minutes or when the setting is completed. (This means that the **[Out of Service]** property of all objects for the respective indoor and outdoor units is in "True". It can be released by the command of **[Control] → [Out of Service] → [False].**)

6-3. Setting Indoor Unit

■ Explanation for Simple Setting of Indoor Units

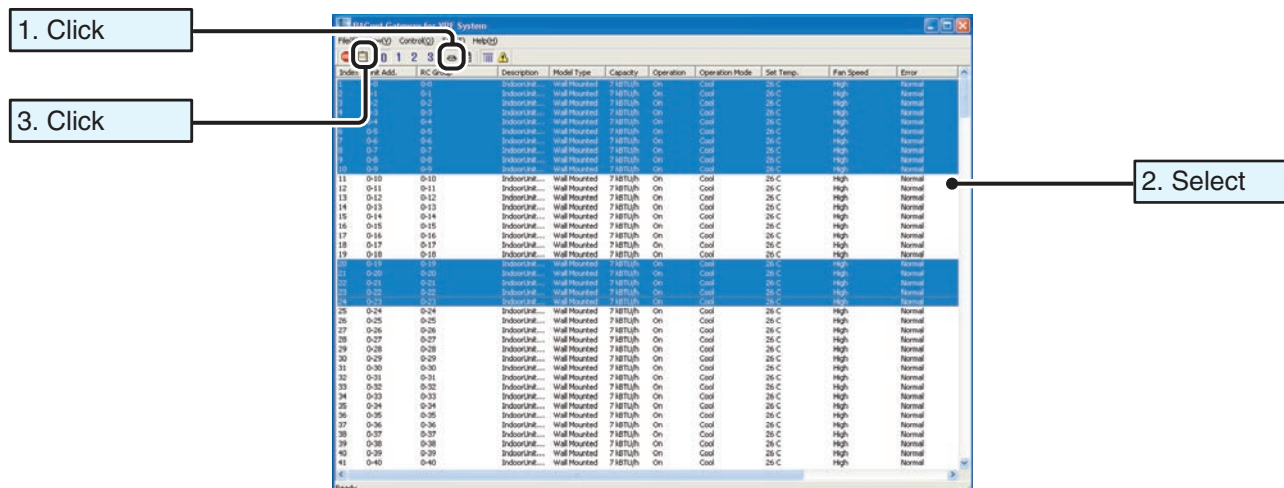
① Display of Setting Screen (Indoor Units)

1. Click the  button.

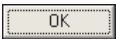
2. Click lines (units) that you wish to display.

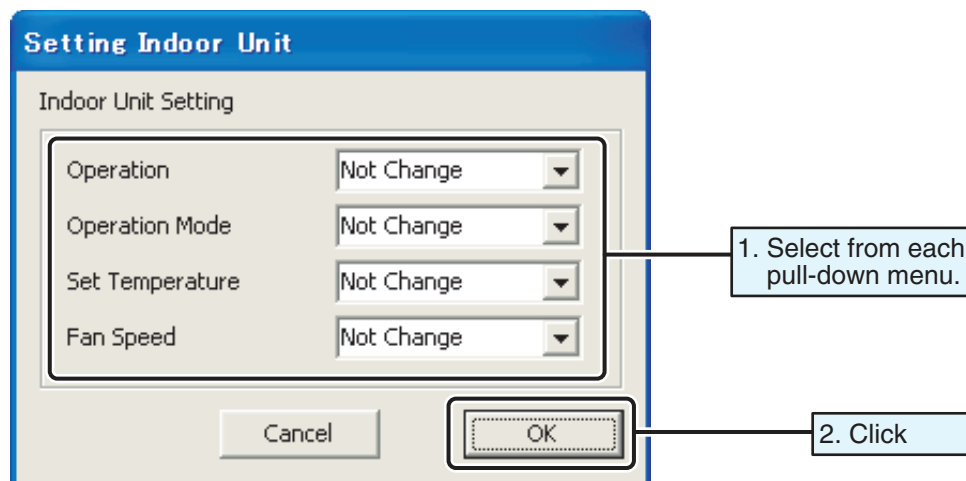
When you wish to display two or more units, click corresponding lines together with the **[Ctrl]** key pressed. For group selection, click lines together with the **[Shift]** key pressed.

3. Click the  button.



② Indoor Unit Setting.

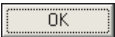
1. Select arbitrary items of **[Operation]**, **[Operation Mode]**, **[Set Temperature]** and **[Fan Speed]** from each pull-down menu.
2. Click the  button.

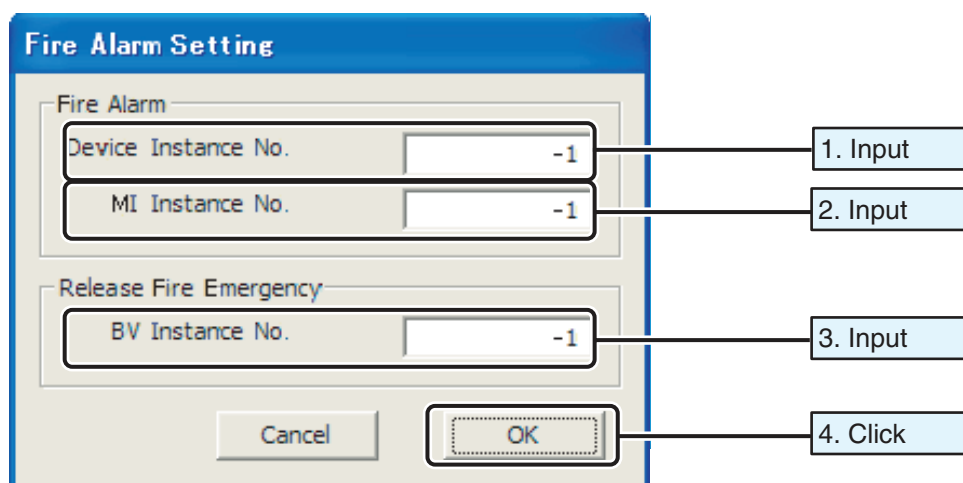


Combo Box	List
Operation	Not Change
	On
	Off
Operation Mode	Not Change
	Auto
	Cool
	Dry
	Fan
	Heat
Set Temperature	Not Change
	16 (°C)
	...
	30 (°C)
Fan Speed	Not Change
	Auto
	High
	Med
	Low

6-4. Fire Alarm Setting (Applicable only at Option Setting)

This setting is applicable only for system that performs “Fire Emergency Stop Control”. (Usually not used.)

1. Input Device Instance number of BACnet Device. (Source Devices of Fire Alarm, such as Anti-disasters Sub System)
2. Input Multi-State Input Instance number of Fire Alarm (UnconfirmedEventNotification Service).
3. Input Binary Value (in this gateway) Instance number. (For Fire Emergency Release.)
4. Click the  button.



Notes



To cancel the Fire Alarm Setting, input “-1” in all the boxes from 1. to 3. and press the OK button.

6-5. Description Setting

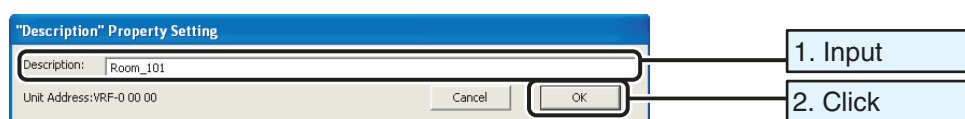
■ Explanation for Description Property Setting for Indoor / Outdoor Units

1. Input any alphanumeric characters of up to 64 characters.

Examples: Room 101, Meeting Room 301

(Default: Indoor Unit_”Address of Y_YY_YY [Address of Indoor Unit]”)

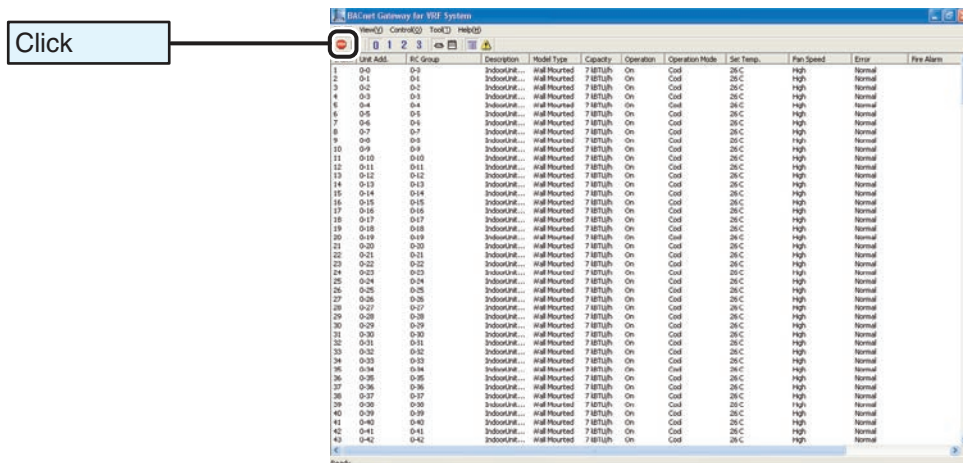
2. Click the  button.


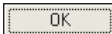


6-6. Stop of Network Response

■ Explanation for Stop of Network Response (BACnet side)

- ① Click the  button to stop Network Response.



- ② In order to release “Stop of Network Response”, click the  button again on the main screen and click the  button on the window of [Release the stop of BACnet network response] shown below.



7. TROUBLESHOOTING

■ There are problems on application startup or application inoperation.

< Cases >

- Program abnormally ends displaying message at application starting or when application is in operation.
- There are problems on application operation, or the system is unstable.

< Shooting >

- This application requires “Software Protection Key (WIBU-KEY)”. When the Software Protection Key has not been inserted into a USB port (When the Software Protection Key is not recognized), a message is displayed and program automatically ends after a while. Software Protection Key Driver Installation is required for recognition of Software Protection Key. (Launch the file “WkRuntime.exe” in “WIBU-KEY Driver” folder in the application CD to install.)
- This application does not work on the PC that “.NET Framework 1.1” has not been installed. Install “.NET Framework 1.1” in your PC. (Launch the file “dotnetfx.exe” in “DOTNET Frame work” folder in the application CD to install.)
- When the operation of this application is unstable, restart the application or OS.

■ IP address cannot be set up or changed.

< Cases >

- IP address cannot be set up at gateway initial setting.

< Shooting >

- IP address setting for TCP/IP protocol is required.
(Refer to Microsoft Windows Network Setting.)

■ There are problems on communications with indoor units and/or outdoor units.

< Cases >

- Indoor unit/s and/or outdoor unit/s are not recognized. (At gateway initial setting)
- Status of indoor unit/s and/or outdoor unit/s is not obtained. Or settings of indoor units are not possible.
- Communications error for indoor units and/or outdoor units occurs.

< Shooting >

- Check the connection of VRF Network communications equipment and the connection of XLON USB Adaptors.
- Check that XLON USB is connected to PC or is working properly.
- Check VRF System Address and that their address numbers are correct.

■ XLON USB Adaptor is not working properly.

< Cases >

- There are problems on XLON USB installation.
- XLON USB Adaptor is not recognized.

< Shooting >

- Check that XLON USB Device is working properly with Microsoft Windows Device Manager. If XLON USB installation has not been completed, install the Driver again after uninstalling XLON USB. (Refer to **4-2. XLON USB Device Installation** on page 8.)

- Confirm the proper use of USB.

Power supply capacity of USB port depends on the PC to be used. Make sure that power supply to XLON USB Adaptor is sufficient. If USB hubs are used, check the connecting layers of the hubs as well. The maximum number of connecting layers by cascade (tree) connections is “6” according to the USB specifications.

* In case that USB port equipped in PC includes a USB hub, it is counted as the first layer. (Although the cascade connections are permitted up to 6 layers, the maximum number of USB connecting equipment are 127 units regardless of the permitted connections number.) The maximum length of cable between USB equipment is 5 meters.

■ VRF System Address is unknown. (When two or more VRF Systems are connected.)

< Cases >

- You wish to check VRF System Address.
- You wish to know how to set up XLON USB Adaptor and VRF System Address. You wish to change VRF System Address.

< Shooting >

- Check “XLON USB Properties” of Microsoft Windows Device Manager. Number shown in the “Devicename” column denotes VRF System Address for the adaptor. (Refer to 4-2. XLON USB Device Driver Installation on page 8.)

- VRF System Address is automatically assigned in the order (starting from “0”) XLON USB Adaptors is connected to the PC in operation. These address numbers are never changed unless a XLON USB adaptor is disconnected. (These address numbers are not changed even if the PC restarts as long as XLON USB Adaptor connection is not changed.)

Remove all the XLON USB Adaptors for reassignment. Addresses are newly assigned in order of the connection when all USB adaptors are connected again. When these adaptors were connected to USB ports that XLON USB Driver has not been installed, XLON USB Driver Installation is required. For the following cases, resetting the numbers would be recommended.

1. Case that USB adaptor connection configuration was changed.
2. Case that some adaptors were disconnected.
3. Case that USB hub was changed.

■ There are problems on communications with BACnet Network.

< Cases >

- Communications with this gateway cannot be possible. No response from gateway.
- Error report is sent from this gateway.
- A large amount of data is sent from this gateway.

< Shooting >

- Check the connection to BACnet communication (transmission) lines. Check IP address setting and communication lines whether LAN port is working properly.
- Check that this gateway is not “Network Response Disable” status. When gateway is in “Network Response Disable” status, it does not communicate at BACnet side. (Except Device Communication Service)
- Check the maximum length of ADPU. Packets exceeding this length cannot be sent. (Refer to **5. INITIAL SETTING** on page 24.)
- When intrinsic notification or COV notification, especially “UnconfirmedCOVNotification Service” has been set up, a large amount of data may be sent. Change the setting if there are any problems. (Refer to **5. INITIAL SETTING** on page 24.)

■ There are problems on operation setting for indoor units.

< Cases >

- Temperature setting for indoor units cannot be possible.
- Operation mode setting for indoor units cannot be possible.

< Shooting >

- Pay attention when you set up a temperature range. Setting range for cooling is 18-30 °C and for heating, 16-30 °C (For S-up series, 10-30 °C.)
- When operation mode is in “OFF”, setting is not reflected. (When operation mode is in “ON”, setting is reflected.)
- For single split type models, whenever **[Operation Mode]** is set as “Fan”, setting temperature is always 0 °C.

■ Status of Outdoor Units (Slave Units) cannot be observed.

< Cases >

- The **[System Type]** and/or **[Priority Operation Mode]** object/s is/are not displayed on the screen of Status List of Outdoor Units.

< Shooting >

- This is not abnormal operation. For Outdoor Units (Slave Units) (Addresses: 66-68), items in **[System Type]** and **[Priority Operation Mode]** are the same as the respective master units

FUJITSU GENERAL LIMITED

1116 Suenaga, Takatsu-ku, Kawasaki 213-8502, Japan

- BACnet is a registered trademark of the American Society of Heating, Refrigerating and Air-Conditioning Engineers, Inc. (ASHRAE).
- Microsoft and Windows are registered trademarks of Microsoft Corporation in the United States and/or other countries.
- Adobe and Acrobat Reader are registered trademarks of Adobe Systems Incorporated in the United States and/or other countries.
- Intel and Pentium are registered trademarks of Intel Corporation or its subsidiaries in the United States and other countries.
- All other brand and product names are trademarks or registered trademarks of their respective holders.